



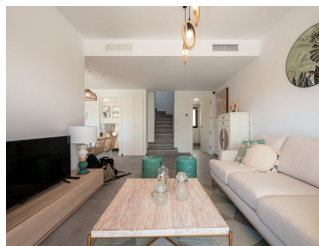
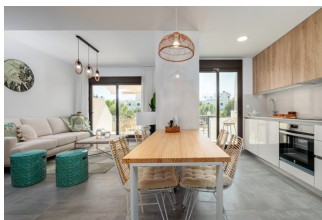
REF: # 10332

ORIHUELA COSTA (VILLAMARTIN PAU-8)



INFO

PRICE:	275.000 €
PROPERTY TYPE:	Villa (Semi detached)
CITY:	Orihuela Costa (Villamartin Pau-8)
BEDROOMS:	2
Bathrooms:	2
Build (m2):	79
Plot (m2):	128
Terrace (m2):	37
Year:	
Floor:	2
Old price	-




DESCRIPTION

FANTASTIC NEW BUILD VILLA SEMI-DETACHED IN PAU 8, ORIHUELA COSTA - with private pool and garden This new build residential complex is made up of 25 villas on two levels with various independent or semi-detached models with private gardens and a large communal area with a swimming pool of which all have the option of an underground parking space and private pool at an extra cost. Built on a 128m2 plot this 79m2 semi-detached villa consists of 2 bedrooms, 2 bathrooms, 37m2 terrace and private garden. Located within walking distance to the famous "Villamartin Plaza" with its many restaurants, bars, supermarkets, banks, pharmacies you have all amenities right on your doorstep! Villamartin was built around one of the most prestigious golf courses on the Costa Blanca, Villamartín Golf Club, it is home to a Cosmopolitan and International community. Just a short distance away you can find three other golf courses such as Las Ramblas, Campoamor

and La Finca. However, it is not only a golfer's paradise, you can also find a large range of activities and entertainment for all the family; water parks in Torrevieja and Ciudad Quesada, open weekly markets, cinemas etc. You will also find some of the best blue flag beaches in the region like La Zenia, Cabo Roig and Campoamor only 5km away! The area is also known to have one of the healthiest climates in the world! So, whether you are looking for a holiday home, a Golf property or a permanent residence, this property offers everything you could need! The nearest Airports are Alicante and Murcia Corvera, both approximately 50 minutes away.



STYLE <ul style="list-style-type: none"> • Modern • Contemporary 	VIEWS <ul style="list-style-type: none"> • Panoramic views 	AIRCONDITIONING <ul style="list-style-type: none"> • Central airconditioning 	DISTANCE TO : <div>Beach : 3 Km</div> <div>Airport: 50 Km</div> <div>Town center : 2 Km</div>
PARKING <div>Parking no Cars: 1</div>	MAIN LIVING AREA <ul style="list-style-type: none"> • Storage • Bathroom en-suite 	FLOORING <ul style="list-style-type: none"> • Tile floors • Stone floors 	KITCHEN <ul style="list-style-type: none"> • Open kitchen • Equipped kitchen • Granite countertop
GARDEN AND TERRACES <ul style="list-style-type: none"> • Open terrace • Automatic watering system • Fenced • Stone walls • Private garden • Communal Garden 	EXTRA <ul style="list-style-type: none"> • Built in wardrobes • Reinforced door • Double glazed windows • Storage room 	ENERGETIC CERTIFIED 	

"OUR EXPERIENCE IS YOUR GUARANTEE"