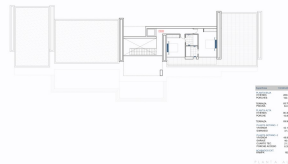




REF: # 9794

CALPE/MORAIRA



INFO

PRICE:	2.350.000 €
PROPERTY TYPE:	Villa
CITY:	Calpe/Moraira
BEDROOMS:	5
Bathrooms:	6
Build (m2):	692
Plot (m2):	1.532
Terrace (m2):	-
Year:	-
Floor:	-
Old price	-

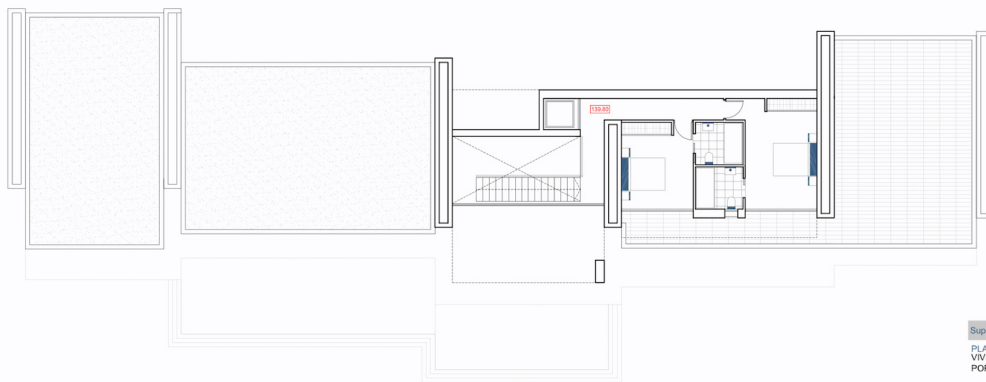
DESCRIPTION

Luxury villa for sale in Benimeit area in Moraira. This high quality villa has 4 floors which are connected with an elevator and an internal staircase. The main floor has a spacious openplan livingdining roomkitchen. The kitchen is fully equipped and has an island for cooking. Sliding doors at ceiling height give direct access to several terraces. In addition there are 3 double bedrooms, all with their own bathroom and a guest toilet. One level up there are 2 more double bedrooms. Each with an ensuite bathroom. The property has 2 basements. Basement number one houses the gym, an additional bathroom and laundry room. In basement number 2 there is a garage for 2 cars and storage rooms. Air conditioning throughout the house (conduct) and central heating. Automatic entrance door with independent pedestrian entrance and intercom. On the same level as the main house is the swimming pool.

ENERGETIC CERTIFIED

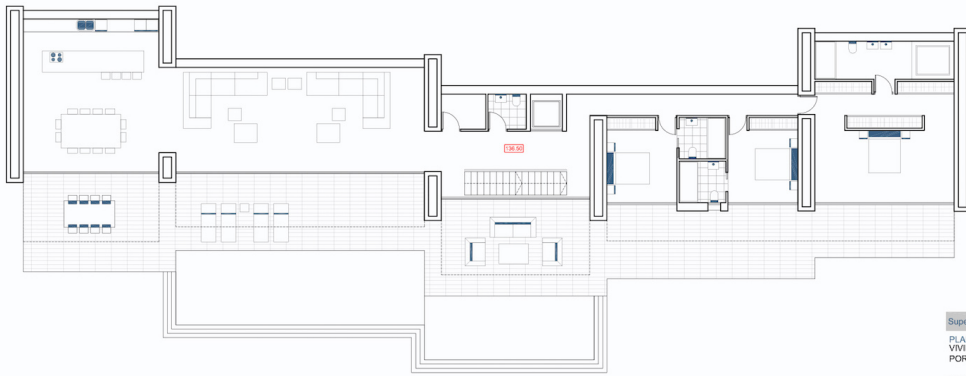






Superficies	Construidas
PLANTA BAJA	
VIVIENDA	283.62m2
PORCHES	102.33m2
TERRAZA	60.78m2
PISCINA	64.96m2
PLANTA ALTA	
VIVIENDA	90.36m2
PORCHE	10.80m2
TERRAZA	69.96m2
PLANTA SOTANO -1	
VIVIENDA	42.15m2
GIMNASIO	37.34m2
PLANTA SOTANO -2	
VIVIENDA	48.80m2
GARAJE	46.45m2
CUARTO TEC.	21.76m2
PORCHE ACCESO	8.35m2
ACABADOS EXT.	
RAMPA	182.85m2

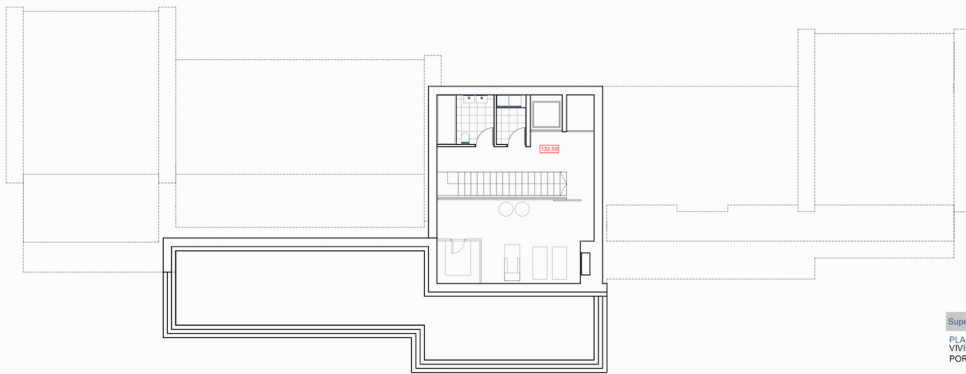
PLANTA ALTA (



Superficies	Construidas
PLANTA BAJA	283.62m ²
VIVIENDA	102.33m ²
PORCHES	
TERRAZA	60.78m ²
PISCINA	64.96m ²
PLANTA ALTA	90.36m ²
VIVIENDA	10.80m ²
PORCHE	
TERRAZA	69.96m ²
PLANTA SOTANO -1	
VIVIENDA	42.15m ²
GINNASIO	37.34m ²
PLANTA SOTANO -2	
VIVIENDA	48.80m ²
GARAJE	46.45m ²
CUARTO TEC.	21.76m ²
PORCHE ACCESO	8.35m ²
ACABADOS EXT.	
RAMPA	182.85m ²

PLANTA BAJA 

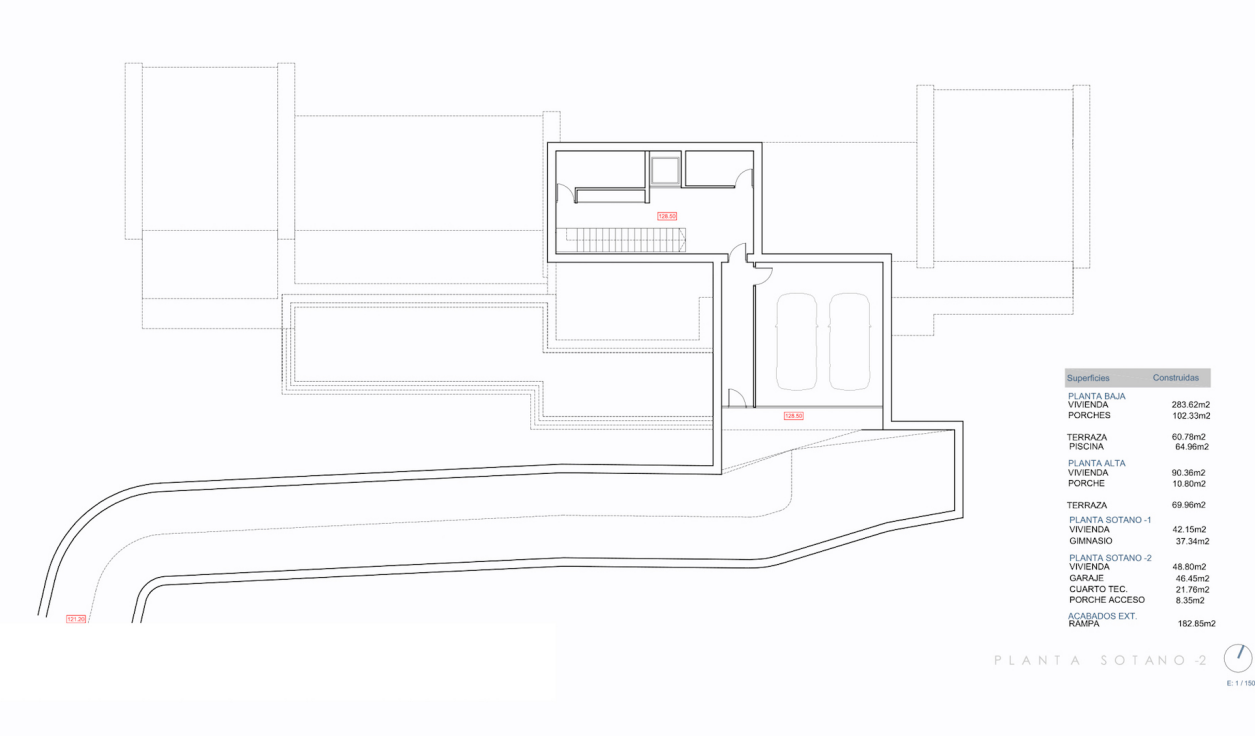
E: 1 / 150



Superficies	Construidas
PLANTA BAJA	283.62m ²
VIVIENDA	102.33m ²
PORCHES	
TERRAZA	60.78m ²
PISCINA	64.96m ²
PLANTA ALTA	90.36m ²
VIVIENDA	10.80m ²
PORCHE	
TERRAZA	69.96m ²
PLANTA SOTANO -1	
VIVIENDA	42.15m ²
GINNASIO	37.34m ²
PLANTA SOTANO -2	
VIVIENDA	48.80m ²
GARAJE	46.45m ²
CUARTO TEC.	21.76m ²
PORCHE ACCESO	8.35m ²
ACABADOS EXT.	
RAMPA	182.85m ²

PLANTA SOTANO -1 

E: 1 / 150



"OUR EXPERIENCE IS YOUR GUARANTEE"