



REF: # 9673

GUARDAMAR DEL SEGURA



INFO

PRICE:	434.500 €
PROPERTY TYPE:	Villa (Semi detached)
CITY:	Guardamar del Segura
BEDROOMS:	4
Bathrooms:	4
Build (m2):	171
Plot (m2):	148
Terrace (m2):	116
Year:	-
Floor:	-
Old price	-



DESCRIPTION

FANTASTIC NEW BUILD VILLA, SEMI-DETACHED, IN GUARDAMAR DEL SEGURA with private pool and garden. This 171m2 semi-detached villa is built over 3 floors and consists of 4 bedrooms, 4 bathrooms, an open plan kitchen with dining/lounge area, a 116m2 terrace, a 148m2 garden with parking space and private pool. There is an option of a solarium at an extra cost. Guardamar del Segura is a town located on the Costa Blanca South. It has 11 kilometres of natural beach and its large pine forest. The large port of Guardamar del Segura has activities throughout the year; there is a large sports centre with paddle tennis, tennis, soccer and a large heated swimming pool that works all year round. There is also a library where there is free wifi and computers. There are shopping centers nearby in Torrevieja, the Habaneras shopping centre and only 15 minutes drive is "La Zenia Boulevard" the largest shopping centre in the Alicante region, it's a one-stop destination for clothes, shoes and general supplies. No matter what you're after, chances are you won't walk out empty-handed. In addition to the original established Golf courses on the Orihuela Costa Villamartin, Las

Ramblas, Real Campoamor and Las Colinas, Guardamar del Segura area is also well served with excellent courses only 4km away such as La Marquesa. Other courses nearby are la Finca and Vistabella all offering different golf experiences with a variety of sea and mountain views. Just 20km away from the Alicante - Elche (El Altet) airport, where there are many flights every day with connections to the main European cities, due to the demand for tourists on the Costa Blanca. There is also an Airport in Murcia (Corvera) and this is 80km away.



STYLE

- Modern

VIEWS

- Panoramic views

DISTANCE TO :

Beach : 2 Km

Airport: 20 Km

PARKING

Parking no Cars: 1

KITCHEN

- Open kitchen

GARDEN AND TERRACES

- Open terrace
- Private garden

EXTRA

- Reinforced door











PLANTA BAJA



PLANTA PRIMERA



PLANTA SEGUNDA

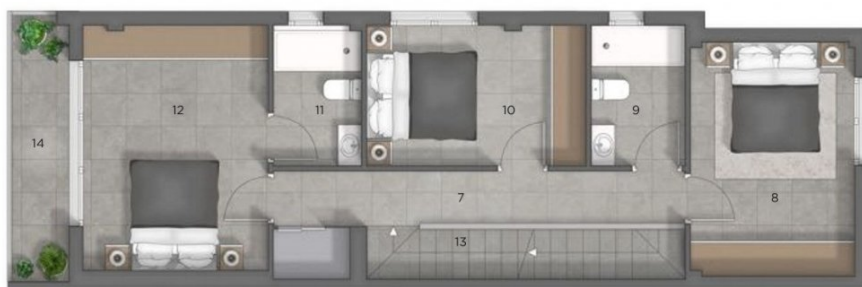


PLANTA SOLARIUM

Superficie planta baja:	51.25 m ²	Terraza cubierta 50%:	6.46 m ²
Superficie planta primera:	52.38 m ²	Terraza descubierta + solarium:	60.74 m ²
Superficie planta segunda:	34.29 m ²		
TOTAL superficie vivienda:	171.72 m ²	TOTAL superficie:	238.92 m ²

Plano vivienda

OPCIÓN
4 DORMITORIOS



PLANTA PRIMERA



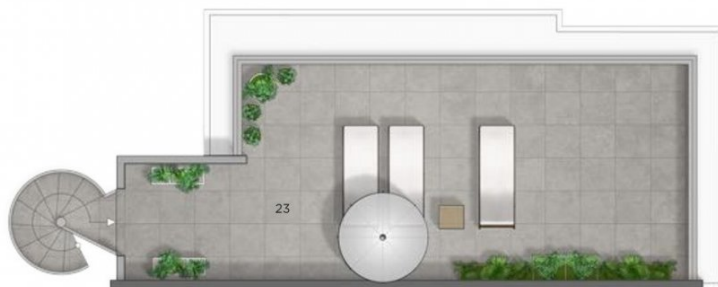
PLANTA BAJA

1 Hall:	2.88 m ²	8 Dormitorio 1:	11.20 m ²
2 Baño 1:	3.36 m ²	9 Baño 2:	3.84 m ²
3 Estar-comedor-cocina:	41.45 m ²	10 Dormitorio 2:	8.98 m ²
4 Ascensor (opcional):	1.11 m ²	11 Baño 3:	3.60 m ²
5 1/2 escalera:	2.45 m ²	12 Dormitorio 3:	13.24 m ²
6 Terraza cubierta:	7.90 m ²	13 Escalera:	4.90 m ²
7 Paso:	6.62 m ²	14 Terraza cubierta:	5.02 m ²

OPCIÓN
4 DORMITORIOS



PLANTA SEGUNDA

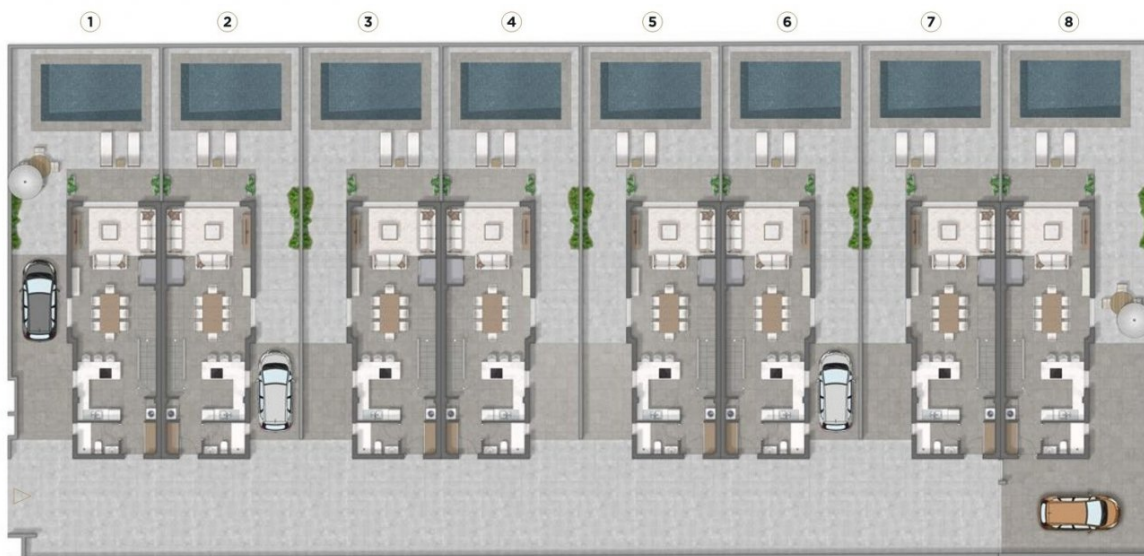


PLANTA SOLARIUM



15	Paso:	1.41 m ²	22	Terraza descubierta:	24.40 m ²
16	Estar:	12.97 m ²	23	Solarium:	36.34 m ²
17	Paso:	1.45 m ²			
18	Baño 4:	3.84 m ²			
19	Trastero:	0.97 m ²			
20	Dormitorio 4:	11.20 m ²			
21	1/2 escalera:	2.45 m ²			

OPCIÓN
4 DORMITORIOS







"OUR EXPERIENCE IS YOUR GUARANTEE"