



REF: # 9637

TORREVIEJA (TORREVIEJA CENTRO)



INFO

PRICE: 259.000 €

PROPERTY TYPE: Penthouse

CITY: Torrevieja (Torrevieja centro)

BEDROOMS: 2

Bathrooms: 1

Build ( m2 ): 132

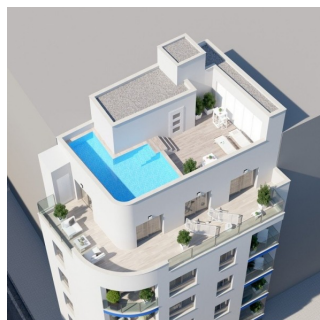
Plot ( m2 ): -

Terrace ( m2 ): 38

Year: -

Floor: -

Old price -



## DESCRIPTION

NEW BUILD APARTMENT PENTHOUSE IN TORREVIEJA located 150 metres from Los Locos beach in Torrevieja. This 132m2 penthouse apartment consists of 2 bedrooms, 1 bathroom, an integrated modern kitchen and large open-plan living/dining room, leading to a 38m2 tiled terrace. The development benefits from a rooftop communal swimming pool and sunbathing area. Torrevieja is a Spanish town in the province of Alicante, on the Costa Blanca. It is known for its superb promenade, restaurants, weekly Friday market and the Habaneras shopping centre. Only 15 minutes drive is "La Zenia Boulevard" the largest shopping centre in the Alicante region, it's a one-stop destination for clothes, shoes and general supplies. No matter what you're after, chances are you won't walk out empty-handed. In addition to the original established Golf courses on the Orihuela Costa Villamartin, Las Ramblas, Real Campoamor and Las Colinas, Torrevieja area is now also well served with excellent courses such as La Finca, La Marquesa, Las Colinas, Lo Romero and Vistabella offering different golf experiences with a variety of sea and mountain views. Alicante airport located 40 minutes away and Murcia airport about 1 hour away.

## ENERGETIC CERTIFIED



**VIEWS**

- Panoramic views

**DISTANCE TO :**

Beach : 200 m

Airport: 50 Km

**GARDEN AND  
TERRACES**

- Open terrace

**EXTRA**

- Reinforced door























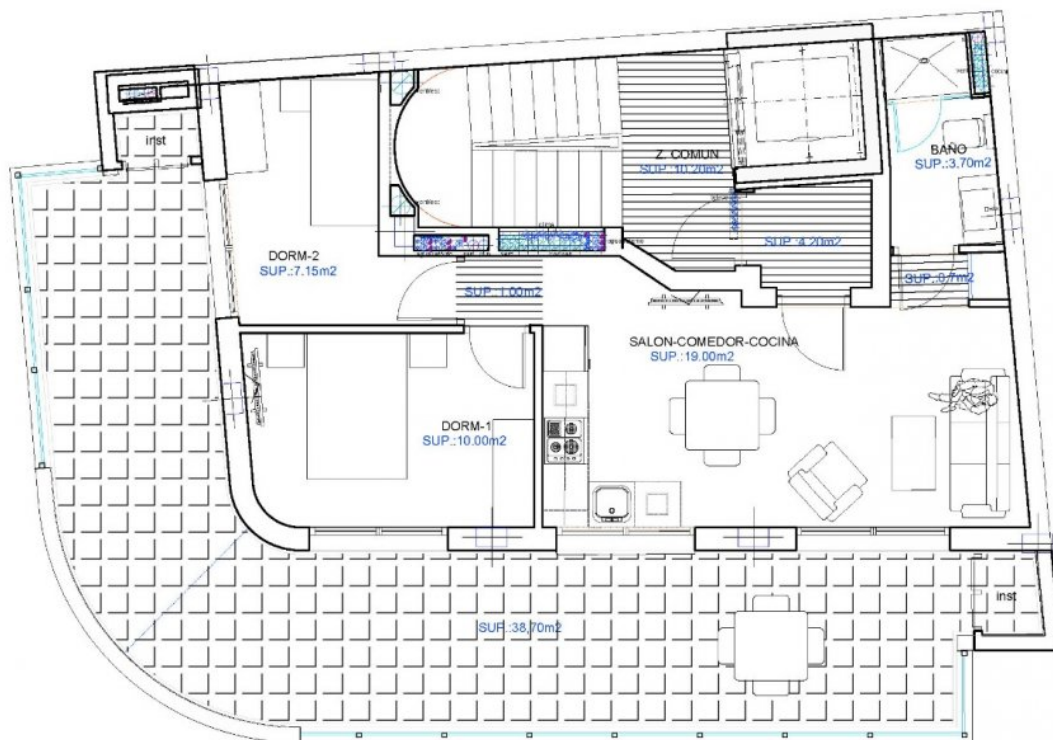








CUADRO DE SUPERFICIES SUPERFICIE VIVIENDA TIPO (ATICO)	
	VIV-A
SALON COMEDOR	19,00 m <sup>2</sup>
PASILLO	1,70 m <sup>2</sup>
BAÑO-1	3,70 m <sup>2</sup>
DORMITORIO-1	10,00 m <sup>2</sup>
DORMITORIO-2	7,15 m <sup>2</sup>
SUP. TERRAZA-1	38,70 m <sup>2</sup>
<b>SUP. ÚTIL VIVIENDA</b>	<b>80,25 m<sup>2</sup></b>
<b>SUP. CONSTRUIDA COMUNES</b>	<b>21,80 m<sup>2</sup></b>
<b>SUPERFICIE CONSTRUIDA TOTAL (terrazas al 100% y E.C.)</b>	<b>132,15 m<sup>2</sup></b>

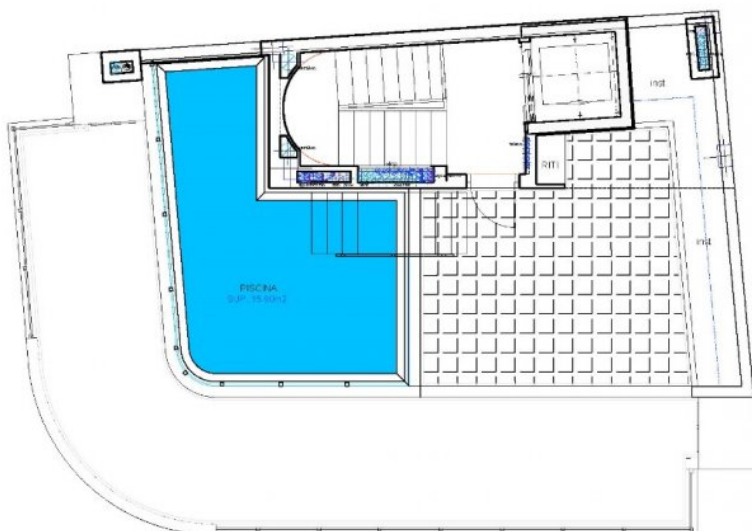


PLANTA ATICO

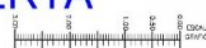


PLANTA ATICO





**PLANTA CUBIERTA**



**PLANTA CUBIERTA/SOLARIUM**









***"OUR EXPERIENCE IS YOUR GUARANTEE"***