



REF: # 8834

ALBIR



INFO

PRICE: 293.000 €

PROPERTY TYPE: Apartment

CITY: Albir

BEDROOMS: 2

Bathrooms: 2

Build (m2): 80

Plot (m2): -

Terrace (m2): -

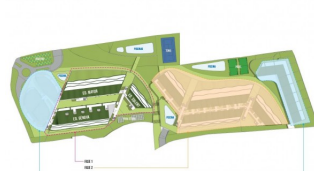
Year: -

Floor: -

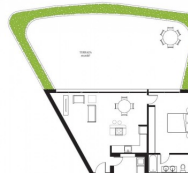
Old price -



LA URBANIZACIÓN



TIPOLOGÍAS
APARTAMENTO
1+0+0+0+0+0



TIPOLOGÍAS
APARTAMENTO
1+0+0+0+0+0



DESCRIPTION

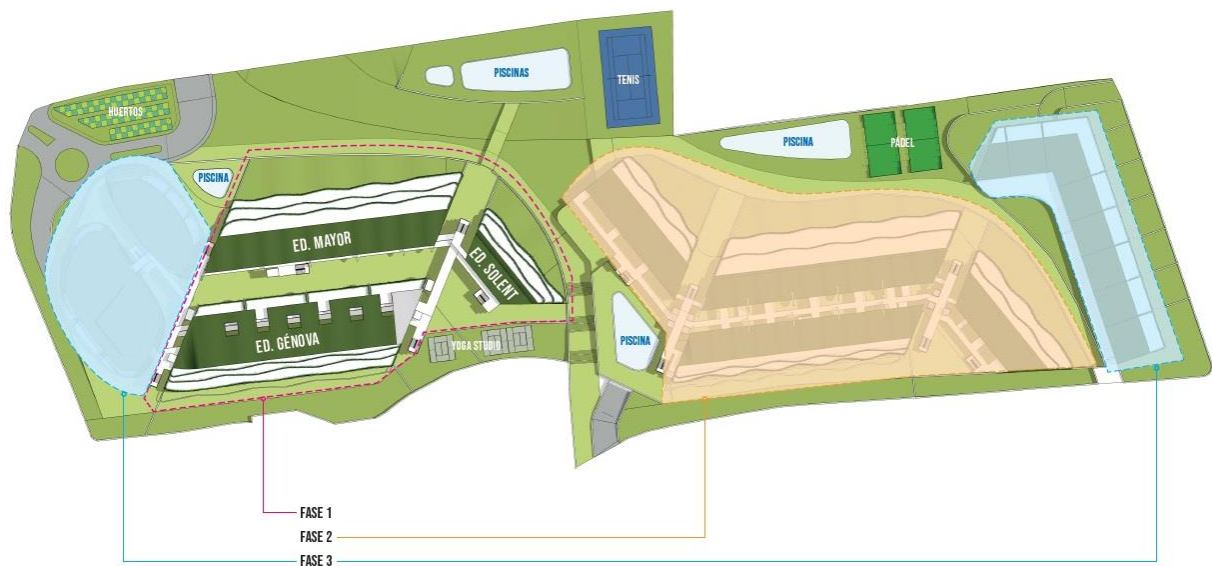
New promotion located in the best area on the beach of l'Albir. The urbanization will be located on a 30,000 m2 plot and will be completely closed, having great security and tranquility and will have a video surveillance system and access control. Surrounding the buildings and at the different levels of the interior urbanization there will be different ornamental water sheets and several swimming pools, it will also have a heated indoor pool, the plot will also have large garden areas and an orchard area with fruit trees. Within the urbanization there will be a concierge service area, E-parking for electric vehicles, vehicle washing area, the pool area will have a Pool Bar and sun loungers, paddle tennis court and tennis court, yoga studio, gym and sauna, coworking with spaces designed for telematic meetings, wifi and reading room, Gourmet room and wine cellar, cinema room, ... The complex will have 82 apartments in its initial phase 1, 2, 3 and 4 bedrooms, all with large gardens and terraces of up to 130 m2, you will have complete installation of air conditioning, underfloor heating and hot water by aerothermal system, you also have the optional possibility of installing a home automation system. Each apartment will have 1 storage room and

parking space with individual electric charger. The prices are from € 293,000, consult for more information by type of apartment.



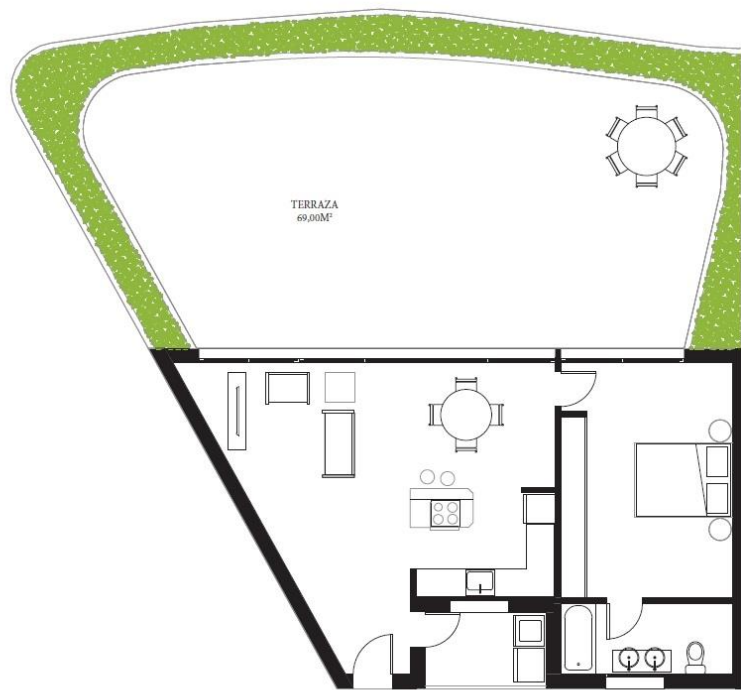


LA
URBANIZACIÓN



TIPOLOGÍAS
DE APARTAMENTO

1 DORMITORIO



SUP. CONSTRUIDA	71,36 m²
TERRAZA (VARIABLE)	69,00 m²

SUPERFICIES ÚTILES	
SALÓN-COMEDOR-COCINA	34,12 m²
DORM. PRINCIPAL	16,97 m²
BANO 1	5,11 m²
GALERÍA	3,77 m²

TIPOLOGÍAS
DE APARTAMENTO

2 DORMITORIOS

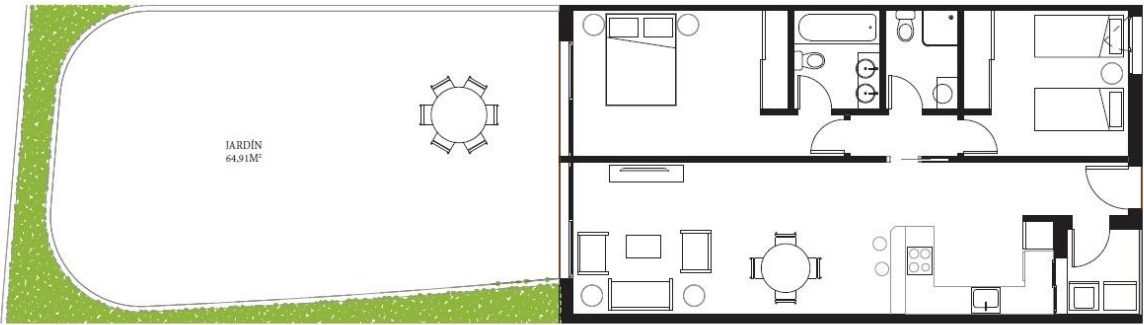


SUP. CONSTRUIDA	98,53 m²
TERRAZA (VARIABLE)	68,47 m²

SUPERFICIES ÚTILES	
SALÓN-COMEDOR-COCINA	42,76 m²
DORM. PPAL	16,01 m²
BAÑO 1	5,84 m²
DORM. DOBLE	11,51 m²
BAÑO 2	4,11 m²
GALERÍA	2,97 m²

TIPOLOGÍAS
DE APARTAMENTO

2 DORMITORIOS

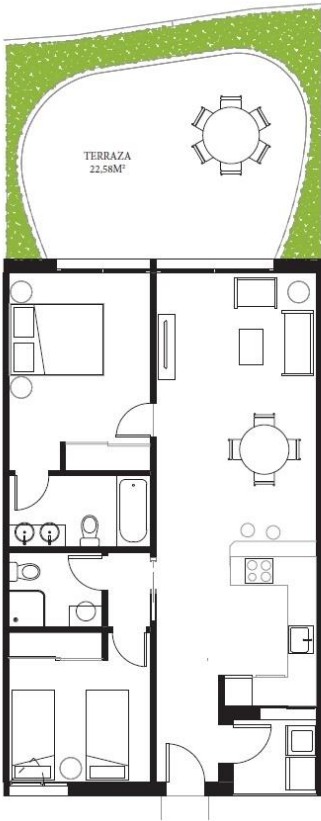


SUP. CONSTRUIDA	88,28 m²
TERRAZA (VARIABLE)	64,91 m²

SUPERFICIES ÚTILES	
SALÓN-COMEDOR-COCINA	35,40 m²
DORM. PPAL	15,54 m²
DORM. DOBLE	11,06 m²
BAÑO-2	3,98 m²
PASO 1	3,92 m²
PASO 2	2,09 m²
GALERÍA	2,84 m²

TIPOLOGÍAS
DE APARTAMENTO

2 DORMITORIOS



SUP. CONSTRUIDA	79,66 m²
TERRAZA (VARIABLE)	22,58 m²

SUPERFICIES ÚTILES	
SALÓN-COMEDOR-COCINA	33,90 m²
DORM. PPAL	12,52 m²
BAÑO 1	4,51 m²
DORM. DOBLE	9,47 m²
BAÑO 2	3,14 m²
PASO	1,40 m²
GALERÍA	2,75 m²

TIPOLOGÍAS
DE APARTAMENTO

3 DORMITORIOS

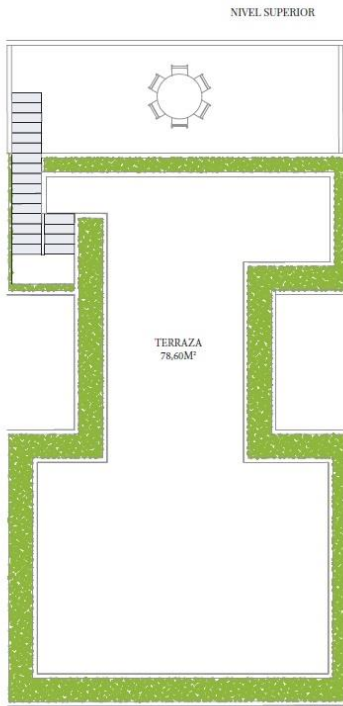
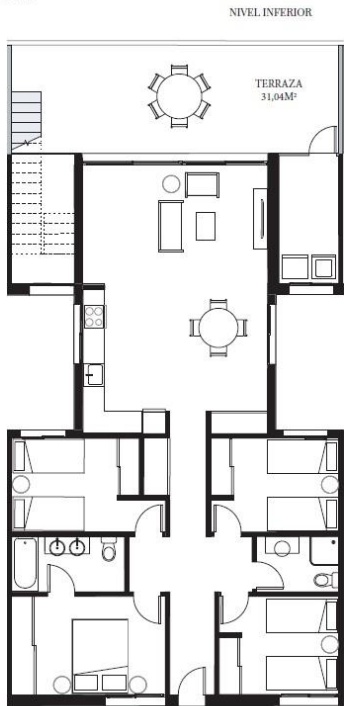


SUP. CONSTRUIDA	106,77 m²
JARDÍN / TERRAZA (VARIABLE)	126,57 m²

SUPERFICIES ÚTILES	
SALÓN-COMEDOR-COCINA	27,87 m²
DORM. PPAL	14,51 m²
BAÑO 1	4,58 m²
DORM. DOBLE 1	14,31 m²
DORM. DOBLE 2	11,97 m²
BAÑO 2	4,04 m²
PASO	8,08 m²
GALERÍA	3,71 m²

TIPOLOGÍAS
DE APARTAMENTO

4 DORMITORIOS



PLANTAS ÁTICO
Y CUBIERTA

SUP. CONSTRUIDA	115,72 m²
TERRAZA N. INFERIOR	31,04 m²
TERRAZA N. SUPERIOR	78,60 m²

SUPERFICIES ÚTILES	
SALÓN/COMEDOR-COCINA	54,61 m²
DORM. PRINCIPAL	10,20 m²
BAÑO 1	4,49 m²
DORM. DOBLE 1	9,04 m²
DORM. DOBLE 2	8,33 m²
DORM. DOBLE 3	8,50 m²
BAÑO 2	9,27 m²
PASO	12,53 m²
GALERÍA	5,45 m²

"OUR EXPERIENCE IS YOUR GUARANTEE"