



REF: # 6146

BENITACHELL



#### INFO

PRICE: 985.000 €

PROPERTY TYPE: Villa

CITY: Benitachell

BEDROOMS: 3

Bathrooms: 3

Build ( m2 ): 351

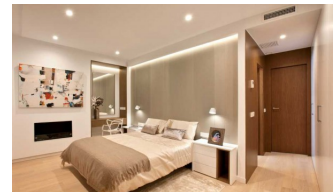
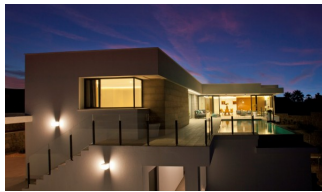
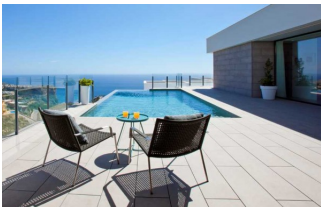
Plot ( m2 ): 929

Terrace ( m2 ): -

Year: -

Floor: -

Old price -



#### DESCRIPTION

The house has been conceived as the union of several open modules and joined by the outside area, creating a fusion between the interior and exterior, obtaining an open, bright and functional housing. Homes of more than 351m<sup>2</sup> built on plots of 929m<sup>2</sup> with fantastic sea views and unique sunrises. Distributed in two heights, the upper floor houses a module for the night area, with a large master bedroom with bathroom en suite and two other bedrooms separated by a bathroom that serves both. The day module houses the entrance hall, guest toilet, and the tandem formed by a large living room and kitchen that are integrated or separated, depending on the needs of each moment, through a mobile wall. Both modules converge in the outdoor area with the terrace and infinity pool as protagonists. On the ground floor we find a large space, of more than 68m<sup>2</sup>, destined to a guest apartment, or simply a leisure area, with a private terrace and an independent installation room. With parking space with pergola and storage.

#### ENERGETIC CERTIFIED



VIEWS

- Panoramic views
- Sea views















***"OUR EXPERIENCE IS YOUR GUARANTEE"***