



REF: # 5981

TORREVIEJA (TORREVIEJA)



INFO

PRICE: 699.000 €

PROPERTY TYPE: Villa

CITY: Torrevieja (Torrevieja)

BEDROOMS: 4

Bathrooms: 4

Build (m2): 202

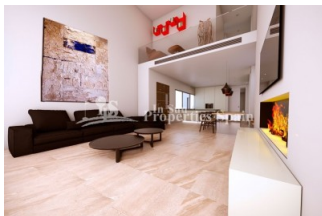
Plot (m2): 360

Terrace (m2): 36

Year: 2020

Floor: -

Old price -



DESCRIPTION

Luxury development near TORRE DEL MORO, TORREVIEJA. ONLY 3 properties remaining; N°1 (corner villa) N°2 & N°3. This modern and stylish project consists of 7 spacious Luxury designed Villas & features; approximately 400m2 plot and 200m2 of floor space comprising; 4 bedrooms & 4 bathrooms, 36m2 sun terrace, 75m2 naturally lit basement, 2 private parking spaces with communal areas & Wooden Pergola. The basement offers natural light and includes a living room, bedroom & bathroom. (The basement can be configured to personal taste at extra cost)* On the ground floor you have an ultra modern living room with kitchen, all on the same level, with access to the garden & Swimming pool area, 1 double bedroom & 1 bathroom. On the first floor; 2 double bedrooms with 2 bathrooms, both en suite and the top floor boasts a roof terrace and solarium with sea views. The town is a vibrant, eclectic mix of locals and foreigners alike; it was built on the strength and prosperity of the salt lakes and was once a sleepy fishing village. Destroyed by an earthquake in 1829 and rebuilt, it is a real melting pot of cultures, not just by its international feel, but due to its mix of new and old

Spanish attitudes and has subsequently become one of the best known resorts on the southern Costa Blanca



STYLE <ul style="list-style-type: none">• Modern• Contemporary	VIEWS <ul style="list-style-type: none">• Panoramic views• Sea views	AIRCONDITIONING <ul style="list-style-type: none">• Central airconditioning	DISTANCE TO : <div>Beach : 200 m</div> <div>Airport: 40 Km</div> <div>Town center : 1 Km</div>
ORIENTATION <div>South East West</div>	FURNITURE <ul style="list-style-type: none">• Not furnished	MAIN LIVING AREA <ul style="list-style-type: none">• Storage• Bathroom en-suite	FLOORING <ul style="list-style-type: none">• Tile floors• Stone floors
KITCHEN <ul style="list-style-type: none">• Open kitchen• Equipped kitchen• Granite countertop	GARDEN AND TERRACES <ul style="list-style-type: none">• Covered terrace• Open terrace• Landscaped• Stone walls• Private garden	EXTRA <ul style="list-style-type: none">• Built in wardrobes• Alarm• Reinforced door• Double glazed windows• Video security• Storage room	



















CUADRO DE SUPERFICIES

PLANTA SÓTANO	
SALA DE MAQUINAS	16,55 m ²
TRASTERO	28,41 m ²
DISTRIBUIDOR	14,74 m ²
ESCALERA	2,76 m ²
TOTAL ÚTIL PS	62,46 m ²
TOTAL CONSTRUIDA PS_GARAJE	75,20 m ²

PLANTA BAJA	
HALL	2,31 m ²
ESTAR-COMEDOR	18,77 m ²
COCINA	15,10 m ²
DORMITORIO 1	10,02 m ²
PASILLO 1	2,64 m ²
BANO 1	3,60 m ²
ESCALERA	0,52 m ²
TOTAL ÚTIL PB	57,96 m ²
TOTAL CONSTRUIDA PB_VIVIENDA CERRADA	70,78 m ²

PLANTA PRIMERA	
DORMITORIO 2	8,10 m ²
DORMITORIO 3	11,10 m ²
PASILLO 2	12,61 m ²
BANO 2	3,42 m ²
BANO 3	3,60 m ²
VESTIDOR	3,65 m ²
TOTAL ÚTIL P1	42,48 m ²
TOTAL CONSTRUIDA P1_VIVIENDA CERRADA	56,12 m ²

SUP. CONSTRUIDA POR UNIDAD DE VIVIENDA	
TOTAL CONSTRUIDA VIVIENDA CERRADA	126,90 m ²
LAMINA DE AGUA PISCINA	25,20 m ²

SUP. CONSTRUIDA CONJUNTO 6 VIVIENDAS	
TOTAL CONSTRUIDA VIVIENDAS CERRADAS	761,40 m ²
LAMINA DE AGUA PISCINAS	151,20 m ²



"OUR EXPERIENCE IS YOUR GUARANTEE"