



REF: # 5769

ALICANTE



INFO

PRICE: 234.000 €

PROPERTY TYPE: Apartment

CITY: Alicante

BEDROOMS: 2

Bathrooms: 2

Build (m2): -

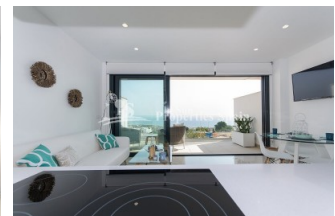
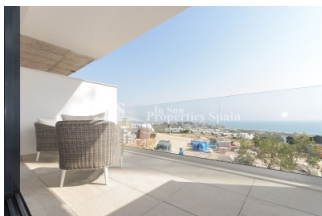
Plot (m2): 156

Terrace (m2): 10

Year: 2019

Floor: -

Old price -



DESCRIPTION

Delivery from Oct 2019. Superb new development of APARTMENTS/DUPLEX in GRAN ALACANT. A privileged location with STUNNING VIEWS of the Mediterranean Sea, in an environment of protected natural areas and with good services and communication. There are two types of Apartments for sale. TYPE A (3 Bedroom) comprises of ground floor parking space, hallway, bedroom, bathroom, open plan lounge, dining area and kitchen plus terrace. To the first floor there are a further 2 bedrooms, 2 bathrooms, laundry room and further terrace. prices from €306,000. TYPE B (2 bedrooms) comprises of ground floor parking space, basement, laundry room and patio. To the first floor 2 bedrooms, 2 bathrooms, open plan kitchen, lounge and dining area plus terrace. Prices from €234,000. All come with underfloor heating in bathrooms, pre-installation of air conditioning ducts and motorised blinds in bedrooms... Access to communal pool and gardens. Excellent connections to Alicante city and Airport. Walking distance to the beaches and just a few kilometers from Alicante, Elche and Santa Pola. Close to the marina, train stations and approx. 5 minutes from the international airport. Nearby there is a wide range of services with access to hospitals,

shopping centres, entertainment and golf courses.



STYLE <ul style="list-style-type: none">• Modern• Contemporary	VIEWS <ul style="list-style-type: none">• Panoramic views• Sea views	DISTANCE TO : <div>Beach : 500 m</div> <div>Airport: 10 Km</div> <div>Town center : 500 m</div>	ORIENTATION <div>South</div>
FURNITURE <ul style="list-style-type: none">• Not furnished	PARKING <div>Parking no Cars: 1</div>	FLOORING <ul style="list-style-type: none">• Tile floors• Stone floors	KITCHEN <ul style="list-style-type: none">• Open kitchen• Equipped kitchen• Granite countertop
GARDEN AND TERRACES <ul style="list-style-type: none">• Covered terrace• Open terrace• Communal Garden	EXTRA <ul style="list-style-type: none">• Built in wardrobes• Reinforced door• Double glazed windows• Laundry room		

















Image not found
https://www.cmsinmo.com/imagenes/uploads/inmu/5/5769/SOLEY_PLAYA_2.jpeg

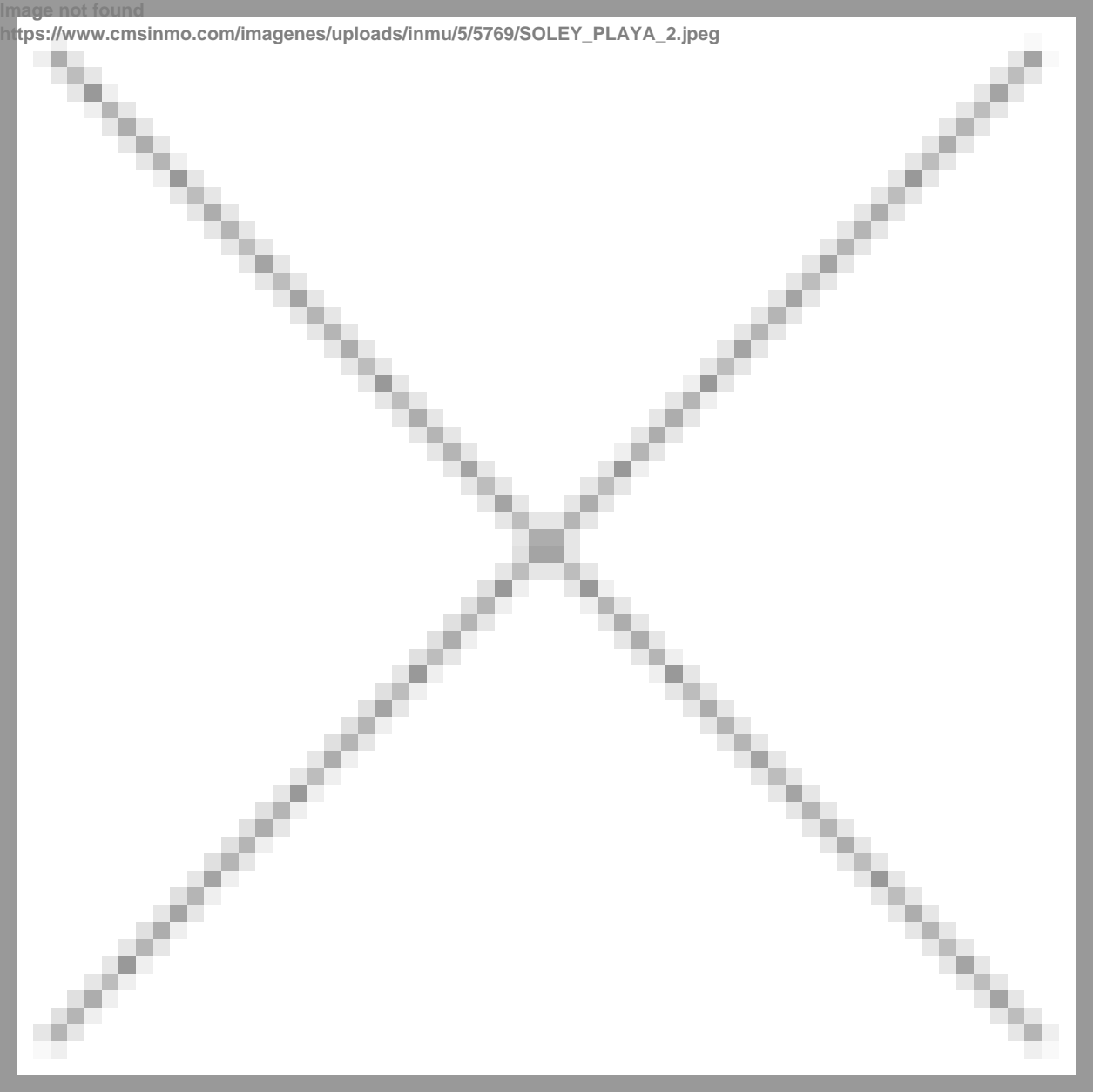
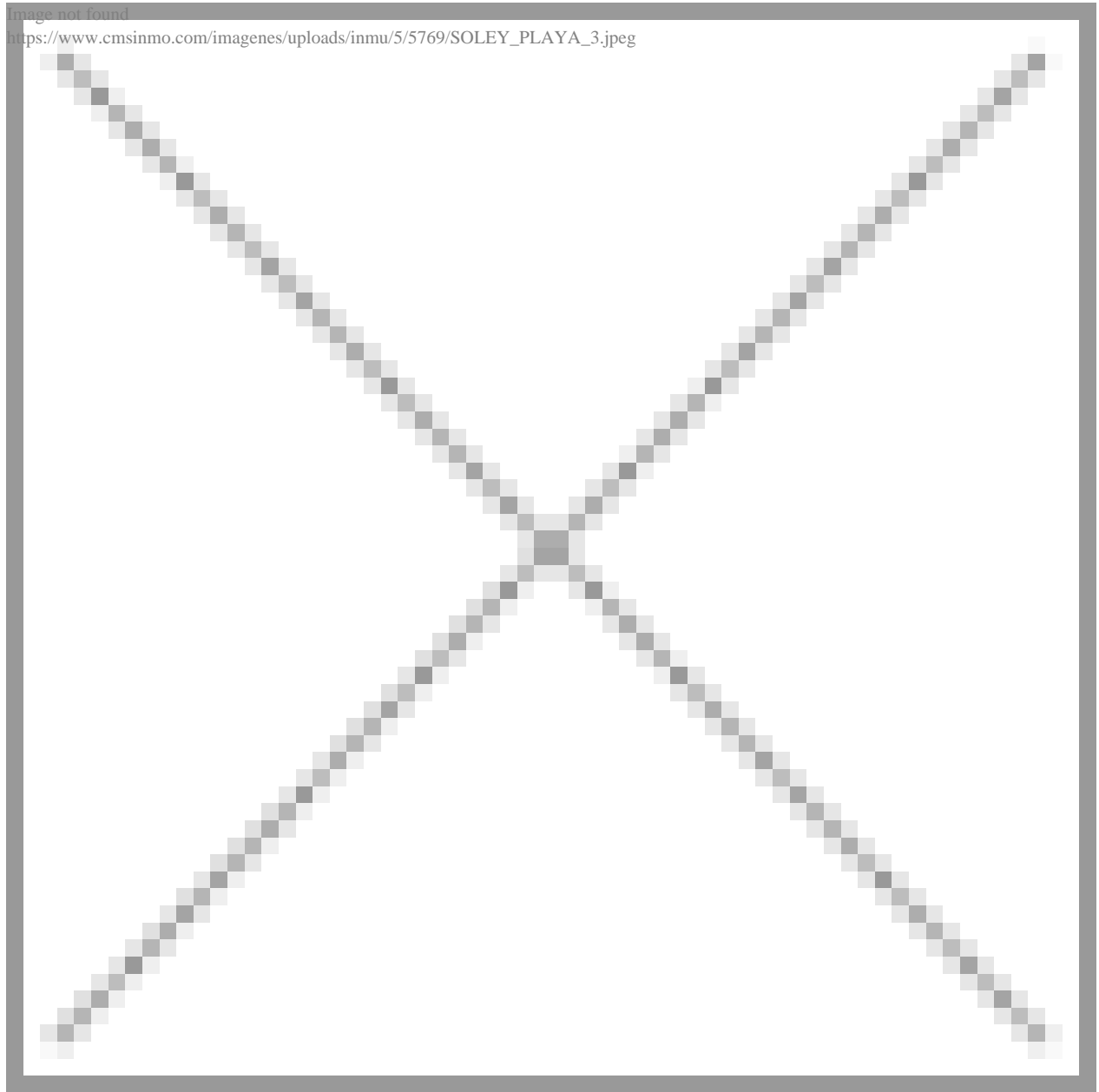


Image not found
https://www.cmsinmo.com/imagenes/uploads/inmu/5/5769/SOLEY_PLAYA_3.jpeg



"OUR EXPERIENCE IS YOUR GUARANTEE"