



REF: # 4516

LA NUCIA/POLOP (POLOP)



INFO

PRICE:	185.000 €
PROPERTY TYPE:	Apartment
CITY:	La Nucia/Polop (Polop)
BEDROOMS:	2
Bathrooms:	2
Build (m2):	88
Plot (m2):	-
Terrace (m2):	73
Year:	
Floor:	2
Old price	-



DESCRIPTION

These apartments are built with the latest in modern building technology quality. Very good insulation in ceilings and walls to curb for sound and to provide a good indoor climate. The apartments are under construction and soon ready to move in. The apartments consist of both 2 and 3 bedrooms and have 2 very modern bathrooms, one with hydro massage shower. Built-in wardrobes in all bedrooms. Underfloor heating in all bathrooms. Internet access in all rooms. Automatic blinds on the bedroom and living room. Fully equipped kitchen with kitchen cabinets in shine finely. Extractor fan, hob, dishwasher washer and dryer. Ceramic tiles have a very exclusive marble design. Double glazed windows with extra good insulation to keep the indoor climate and to dampen sound. PVC frame with flip system. Installed alarm, pre-installed air conditioning with submerged ceiling for air ducts. (hidden facility) Armored head door. Outside the terrace there are used anti sliding tiles. First floor apartment has access to a large private garden and the apartment on the second floor has a very large roof terrace with a great view. This area is located

in Polop municipality and with nature right outside the door. At the same time, the apartments are very central with approx. 400-450 meters to a small shopping center with a grocery store cafe and restaurant. It's about 2 km to La Nucia center. Access to the common area with swimming pool and sauna. The apartment on the ground floor can with a small addition be installed private swimming pool, outdoor light, shower, etc.



STYLE <ul style="list-style-type: none">• Modern	AIRCONDITIONING <ul style="list-style-type: none">• Central airconditioning	DISTANCE TO : <div>Beach : 7 Km</div> <div>Airport: 50 Km</div> <div>Town center : 1 Km</div>	ORIENTATION <div>South</div>
PARKING <div>Garage no Cars : 1</div> <div>Parking no Cars: 1</div>	FLOORING <ul style="list-style-type: none">• Tile floors	KITCHEN <ul style="list-style-type: none">• Open kitchen• Equipped kitchen• Granite countertop	GARDEN AND TERRACES <ul style="list-style-type: none">• Covered terrace• Open terrace• Exterior lights• Automatic watering system• Fruit trees• Palm trees• Fenced• Private garden• Communal Garden
HEATING <ul style="list-style-type: none">• Floor heating bathrooms	EXTRA <ul style="list-style-type: none">• Built in wardrobes• Alarm• Reinforced door• Double glazed windows• Satellite TV• Internet		



PLANTA BAJA / GROUND FLOOR



PLANTA CUBIERTA / ROOF TERRACE

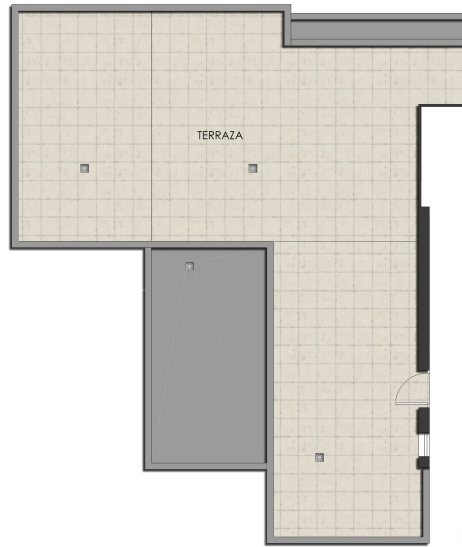
VIVIENDA	
RECIBIDOR	3.80
SALÓN-COMEDOR	21.95
COCINA	5.34
DESPENSA	1.71
DISTRIBUIDOR	1.83
DORMITORIO 1	10.84
BAÑO 1	3.47
DORMITORIO 2	6.24
BAÑO 2	2.43
TERRAZA 1	10.03
TERRAZA 2	4.15
SOLARUM	85.60
PLAZA APARCAMIENTO	12.00
TOTAL SUPERFICIE VIVIENDA D	
	77.70

Escala Gráfica / Graphic Scale

0 5



PLANTA BAJA / GROUND FLOOR



PLANTA CUBIERTA / ROOF TERRACE

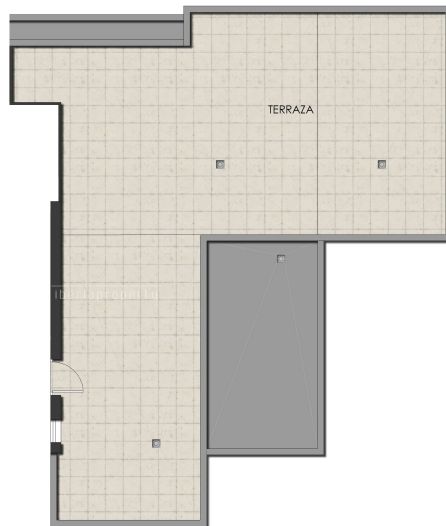
VIVIENDA	
RECIBIDOR	3.88
SALÓN-COMEDOR	22.02
COCINA	9.34
DESPENSA	1.71
DISTRIBUIDOR	3.06
DORMITORIO 1	12.05
BAÑO 1	6.63
DORMITORIO 2	9.38
DORMITORIO 3	6.66
BAÑO 2	3.24
TERRAZA 1	10.60
TERRAZA 2	6.07
SOLARIUM	67.10
PLAZA APARCAMIENTO	12.55
TOTAL SUPERFICIE VIVIENDA C	94.82

Escala Gráfica / Graphic Scale

0 5



PLANTA BAJA / GROUND FLOOR



PLANTA CUBIERTA / ROOF TERRACE

VIVIENDA	
RECIBIDOR	3.88
SALÓN-COMEDOR	22.02
COCINA	9.34
DESPENSA	1.71
DISTRIBUIDOR	3.06
DORMITORIO 1	12.05
BAÑO 1	6.63
DORMITORIO 2	9.38
DORMITORIO 3	6.66
BAÑO 2	3.20
TERRAZA 1	10.60
TERRAZA 2	3.97
SOLARIUM	68.42
PLAZA APARCAMIENTO	12.50
TOTAL SUPERFICIE VIVIENDA H	91.99

Escala Gráfica / Graphic Scale

0 5



BUNGALOWS TOP FLOOR with Solarium

**ZONA COMUNITARIA CON JARDÍN,
PISCINA CLIMATIZADA Y SAUNA**
**COMMUNITY AREA WITH GARDEN,
CLIMATIZED POOL AND SAUNA**



20 BUNGALOWS

DE 2 Y 3 DORMITORIOS EN PLANTA BAJA CON JARDÍN
O EN PLANTA ALTA CON SOLARIUM
WITH 2 or 3 BEDROOMS: GROUND FLOOR WITH GARDEN
OR TOP FLOOR WITH SOLARIUM

56 VILLAS SEMIADOSADAS / SEMIDETACHED VILLAS

DE 2 O 3 DORMITORIOS
CON PARCELA EN ESQUINA Y SOLARIUM
WITH 2 or 3 BEDROOMS
WITH CORNER-PLOT AND SOLARIUM

CONJUNTO RESIDENCIAL DEVELOPMENT PLAN















"OUR EXPERIENCE IS YOUR GUARANTEE"