



REF: # 1570

ALTEA (ALTEA HILLS)



#### INFO

PRICE: 1.270.000 €

PROPERTY TYPE: Villa

CITY: Altea (Altea hills)

BEDROOMS: 3

Bathrooms: 2

Build ( m2 ): 245

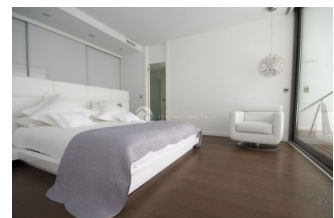
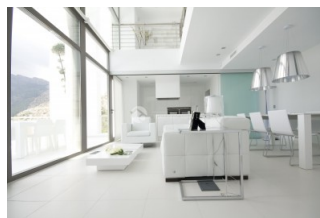
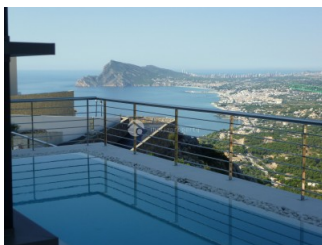
Plot ( m2 ): 680

Terrace ( m2 ): 30

Year: 2012

Floor: 2

Old price -



#### DESCRIPTION

Designer villas designed by Carlos Gilardi He has designed more than 50% of the modern villas in Sierra Altea. Southwest facing with extreme views, the project consists of a total of 10 units across 3 rows. Properties are priced between 1270 and € 1.48 million of depending on location there are two models. Very high standard. Please contact us for further information

#### ENERGETIC CERTIFIED



<b>STYLE</b>	<b>VIEWS</b>	<b>AIRCONDITIONING</b>	<b>DISTANCE TO :</b>
<ul style="list-style-type: none"><li>Modern</li></ul>	<ul style="list-style-type: none"><li>Panoramic views</li><li>Sea views</li><li>Mountain views</li></ul>	<ul style="list-style-type: none"><li>Central airconditioning</li></ul>	Beach : 3 Km Airport: 70 Km Town center : 2 Km
<b>ORIENTATION</b>	<b>FURNITURE</b>	<b>PARKING</b>	<b>MAIN LIVING AREA</b>
South west	<ul style="list-style-type: none"><li>Not furnished</li></ul>	Garage no Cars : 2 Parking no Cars: 2	<ul style="list-style-type: none"><li>Office</li><li>Storage</li><li>Wine cellar</li><li>Bathroom en-suite</li></ul>
<b>FLOORING</b>	<b>KITCHEN</b>	<b>GARDEN AND TERRACES</b>	<b>HEATING</b>
<ul style="list-style-type: none"><li>Tile floors</li></ul>	<ul style="list-style-type: none"><li>Open kitchen</li><li>Equipped kitchen</li><li>Granite countertop</li></ul>	<ul style="list-style-type: none"><li>Covered terrace</li><li>Exterior lights</li><li>Automatic watering system</li><li>Palm trees</li><li>Landscaped</li><li>Fenced</li><li>Stone walls</li><li>Electric gate</li><li>BBQ/grill</li></ul>	<ul style="list-style-type: none"><li>Central gas heating</li><li>Floor heating</li><li>Community gas</li></ul>
<b>EXTRA</b>			
<ul style="list-style-type: none"><li>Indoor jacuzzi</li><li>Built in wardrobes</li><li>Alarm</li><li>Reinforced door</li><li>Double glazed windows</li><li>Door bell with camera</li><li>Satellite TV</li><li>Storage room</li><li>Laundry room</li><li>Lift</li><li>Water softener</li></ul>			





























**"OUR EXPERIENCE IS YOUR GUARANTEE"**