



REF: # 11988

FINESTRAT



INFO

PRICE: 460.000 €

PROPERTY TYPE: Apartment

CITY: Finestrat

BEDROOMS: 2

Bathrooms: 2

Build (m2): 106

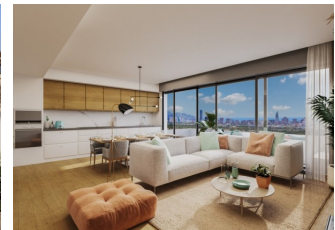
Plot (m2): -

Terrace (m2): -

Year: -

Floor: -

Old price -



DESCRIPTION

NEW RESIDENTIAL COMPLEX IN FINESTRAT WITH SEA VIEWS !!!

The residential has in its center a small valley or valley and on each side of this valley there is a block of flats. The houses are oriented to the sea and the South, with large front terraces, spaces that give life. In the residential you can choose houses on ground floors with 3 duplex bedrooms with a terrace on the ground floor and a garden in the basement (where there is a large open space that can be enabled for additional bedrooms), first floors with 2 bedrooms with large terraces or plants 3 bedroom penthouse with large private terraces and solarium. All of them with wonderful views of the sea and the Benidorm skyline. The terraced structure of the complex makes the terraces stagger their descent to the valley with large walls of cyclopean stone and classic masonry. Natural stone. Like three thousand years ago. And each platform brings its beauty. The highest with the water, the pools, the viewpoint and the social meeting areas. And the look at the sea, from above, on its right scale. The following terraces bring vegetation and paths to walk them. For meditation, for a walk and to talk with Nature. To be and to watch. Benidorm and its beaches are just 3 km away, with all

the leisure offer you could wish for. Luxury finishes, spacious rooms and terraces, spacious common areas and views of the sea and the Benidorm skyline will make this complex one of the references in the area.



VIEWS

- Panoramic views



















VIVIENDA

Apartamento

6B



Superficie Útil Tipo 2

Planta Tipo

1. Distribuidor	3.24 m²
2. Armario	0.79 m²
3. Salón-Comedor-Cocina	34.17 m²
4. Dormitorio Ppal	12.94 m²
5. Dormitorio 2	9.94 m²
6. Baño 1	4.66 m²
7. Baño 2	3.77 m²
8. Lavandería	2.40 m²

9. Terraza 21.78 m²

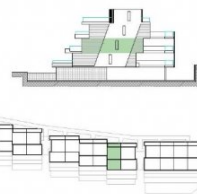
Total Superficie Útil 93.45 m²

Superficie Construida (con PP, ZZCC)

Sup. Vivienda + PP de ZZCC 106.95 m²

Sup. Terraza 24.13 m²

Total Superficie Construida 131.08 m²



0 1 2 3 4 5 m



Plano sujeto a posibles modificaciones por razones o exigencias de índole técnica o jurídica. Las superficies son aproximadas. Cocina y amueblamiento orientativo, sin valor contractual.



"OUR EXPERIENCE IS YOUR GUARANTEE"