



REF: # 11974

COSTA MURCIA (ROLDAN)



#### INFO

|                 |                       |
|-----------------|-----------------------|
| PRICE:          | 199.000 €             |
| PROPERTY TYPE:  | Apartment             |
| CITY:           | Costa Murcia (Roldan) |
| BEDROOMS:       | 2                     |
| Bathrooms:      | 2                     |
| Build ( m2 ):   | 80                    |
| Plot ( m2 ):    | -                     |
| Terrace ( m2 ): | -                     |
| Year:           | -                     |
| Floor:          | -                     |
| Old price       | -                     |



#### DESCRIPTION

**NEW BUILD BUNGALOWS IN ROLDAN** New Build gated residential complex of bungalow apartments located in Roldán, Murcia. These exclusive bungalows are designed with 3 bedrooms and 2 bathrooms, terrace on the ground floor and with 2 bedrooms and 2 bathrooms and solarium for the upper floor. The interiors, elegant and functional, have high quality floors, fully fitted kitchens in white combined with imitation wood, including electrical appliances. The bathrooms have a vanity unit with washbasin and light. The bedrooms include lined wardrobes with drawers and sliding doors and each property has pre-installation for ducted air conditioning. The exteriors are not less impressive, including a communal swimming pool and a beautiful sport area and childrens playground on artificial grass to enjoy. Each property has parking space. Storerooms are optional at an extra cost. Roldan itself is a traditional town with all the local amenities you will need including Supermarkets, Restaurants, Bars, Health Clinic, Pharmacy, Police Station, Petrol Station, Mechanics, Dentists, Doctors and more. The nearby golf resorts of La Torre, & Terrazas are easily accessible, Corvera Airport is 15 minutes away & the beaches of the Mar Menor just 20 minutes drive.

#### ENERGETIC CERTIFIED



## VIEWS

- Panoramic views

## PROPERTY GALLERY























# VIVIENDA 1F - 2 DORMITORIOS

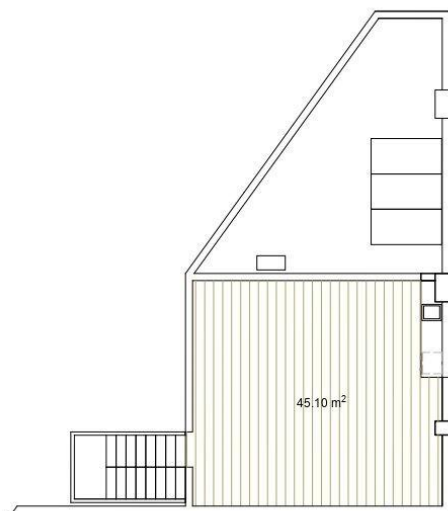
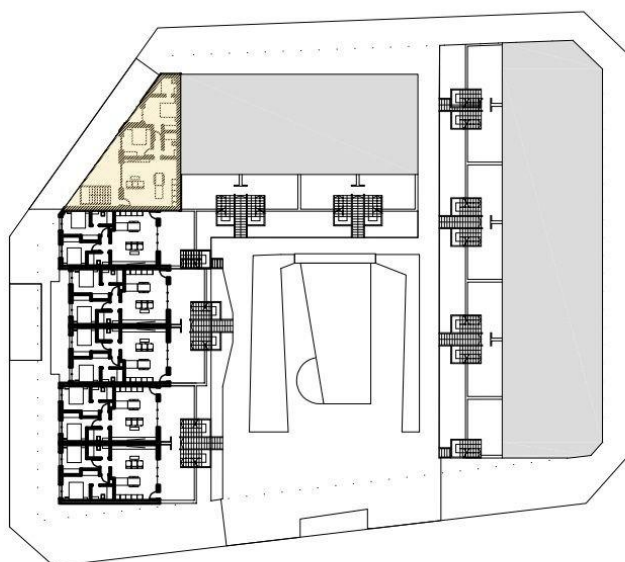
Sup. Construida: 80.10 m2

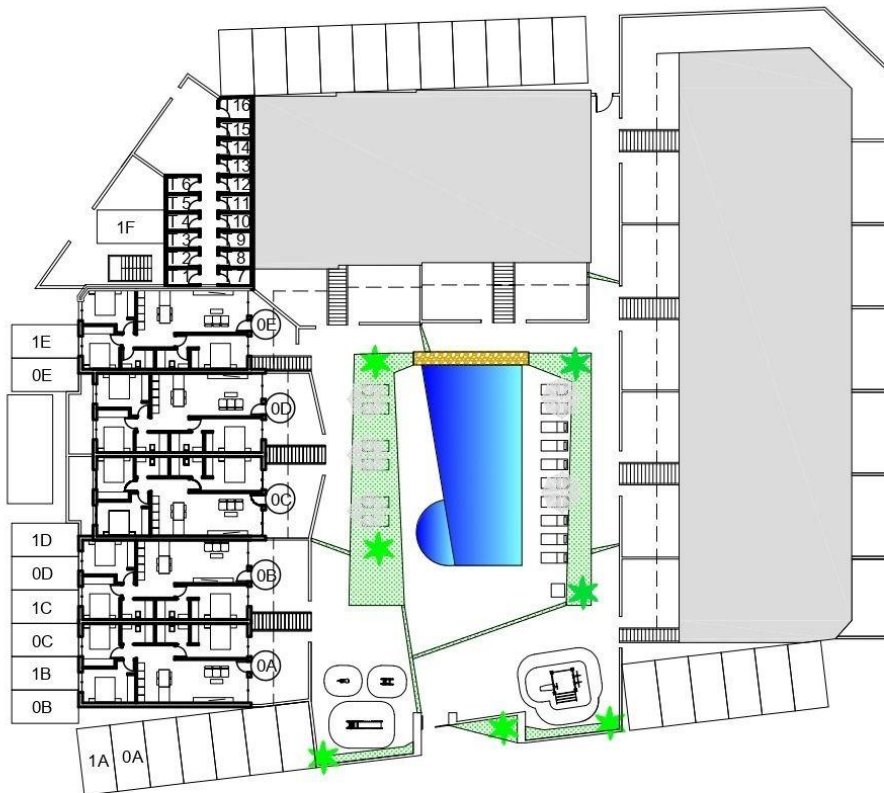
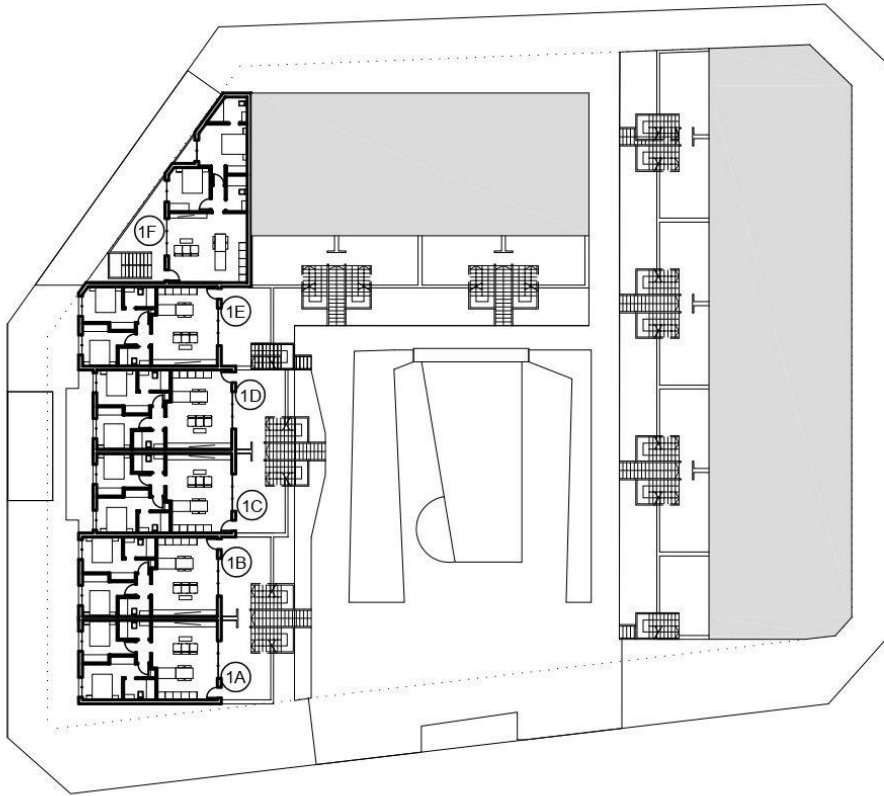
Sup. Terraza incluido porche: 15.50 m2

Sup. Porche incluido en Terraza: 4.20 m2

Sup. Solarium: 45.10 m2

Sup. Aparcamiento privado: 55.45 m2





**"OUR EXPERIENCE IS YOUR GUARANTEE"**