



REF: # 11562

ORIHUELA COSTA



#### INFO

PRICE:	279.900 €
PROPERTY TYPE:	Villa (Semi detached)
CITY:	Orihuela Costa
BEDROOMS:	3
Bathrooms:	3
Build ( m2 ):	98
Plot ( m2 ):	200
Terrace ( m2 ):	15
Year:	
Floor:	2
Old price	-



#### DESCRIPTION

**\*KEY READY\* NEW BUILD SEMI-DETACHED VILLA IN DAYA NUEVA** - private pool and garden. This lovely 98m2 semi-detached villa is built over 2 floors and is situated in the Spanish village of Daya Nueva and consists of 3 bedrooms, 3 bathrooms, open plan kitchen with the lounge area, fitted wardrobes, private garden with the pool and parking space. This property is located only few minutes walk from the village centre with restaurants, bars, shops, town hall and an outside swimming pool. It is small idyllic and rural village surrounded by scenic countryside with orange and lemon groves. The beach of Guardamar is a 10 minute drive and Alicante airport only 25 minutes away. The Golf courses of La Marquesa golf in Ciudad Quesada and La Finca Golf In Algorfa are both within 10 minutes drive.

#### ENERGETIC CERTIFIED

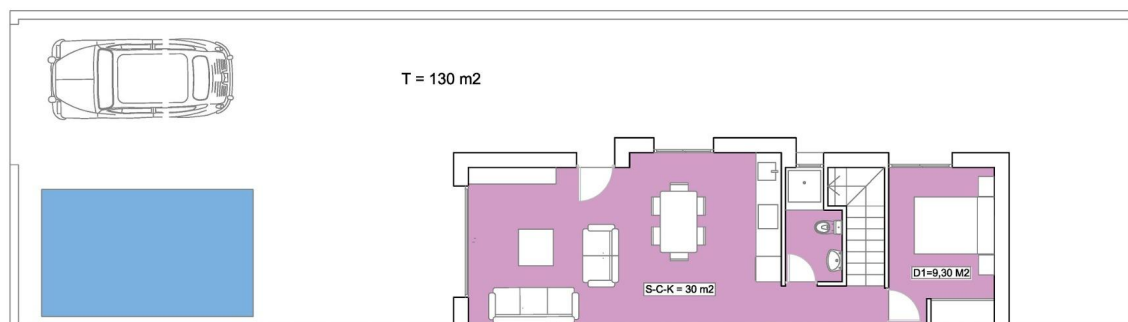
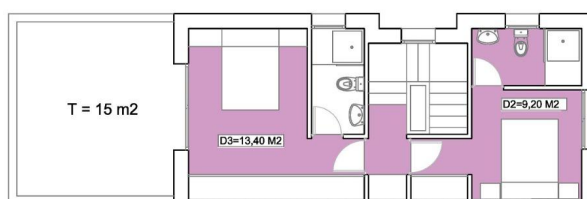


<b>STYLE</b> <ul style="list-style-type: none"><li>• Modern</li><li>• Contemporary</li></ul>	<b>VIEWS</b> <ul style="list-style-type: none"><li>• Panoramic views</li></ul>	<b>AIRCONDITIONING</b> <ul style="list-style-type: none"><li>• Central airconditioning</li></ul>	<b>DISTANCE TO :</b> <div>Beach : +10 Km</div> <div>Airport: 40 Km</div> <div>Town center : 2 Km</div>
<b>FURNITURE</b> <ul style="list-style-type: none"><li>• Not furnished</li></ul>	<b>PARKING</b> <div>Parking no Cars: 1</div>	<b>FLOORING</b> <ul style="list-style-type: none"><li>• Tile floors</li><li>• Stone floors</li></ul>	<b>KITCHEN</b> <ul style="list-style-type: none"><li>• Open kitchen</li></ul>
<b>GARDEN AND TERRACES</b> <ul style="list-style-type: none"><li>• Open terrace</li><li>• Private garden</li></ul>	<b>EXTRA</b> <ul style="list-style-type: none"><li>• Built in wardrobes</li><li>• Alarm</li><li>• Reinforced door</li><li>• Double glazed windows</li><li>• Door bell with camera</li></ul>		









PARCELA = 200 M²

SUP. CONSTRUIDA = 98 M²

TERRAZAS = 145 M²

PISCINA = 5 X 3 M²







***"OUR EXPERIENCE IS YOUR GUARANTEE"***