



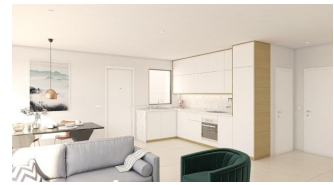
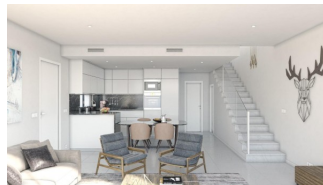
REF: # 11561

COSTA MURCIA (SAN PEDRO DEL PINATAR)



#### INFO

PRICE:	320.000 €
PROPERTY TYPE:	Villa
CITY:	Costa Murcia (San Pedro del Pinatar)
BEDROOMS:	3
Bathrooms:	2
Build ( m2 ):	104
Plot ( m2 ):	120
Terrace ( m2 ):	-
Year:	-
Floor:	-
Old price	-



#### DESCRIPTION

NEW BUILD RESIDENTIAL OF SEMI-DETACHED VILLAS IN SAN PEDRO DEL PINATAR These stunning spacious semi-detached villas have been thoughtfully designed to provide the perfect home with spacious ground floor terraces and large-format sliding glass windows to access it. On the ground floor we have open plan salon with kitchen, storeroom and 1 bedroom with 1 bathroom. The first floor we have 2 large bedrooms with a large terrace from the master bedroom and the second bedroom and 1 bathroom. Private garden with off-road parking. Options for a rooftop solarium a private pool with an extra cost. San Pedro del Pinatar's privileged location on the Mar Menor and Mediterranean coastline it attracts those with an interest in sailing and watersports, providing marina mooring and sailing clubs, while the beaches and natural mud baths attract those seeking safe sun, sea and sand. San Pedro del Pinatar has an established community and offers an excellent range of activities, including covered swimming pool and sports facilities, as well as a year round programme of social activities by the pleasant winter weather. The benefits of the mud baths, typical of the

region, or the calm waters of the Mar Menor, have favored the growth of Lo Pagán, wich currently has all kind of amenities. In addition, it has an excellent location, just 5 minutes from the Comercial Center Dos Mares.



**VIEWS**

- Panoramic views

**GARDEN AND  
TERRACES**

- Private garden

## PROPERTY GALLERY





























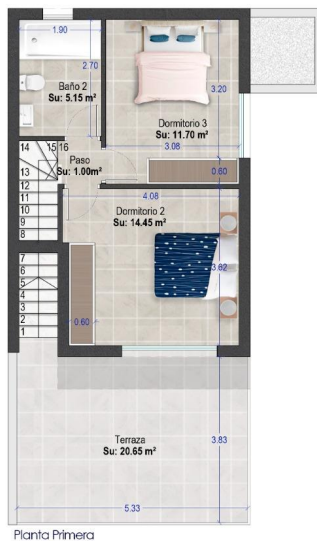
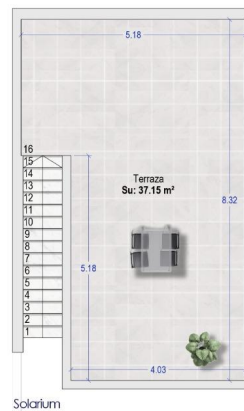


Imagen Vivienda



Parcela General



Superficies		Parcela..... 120.58 m²	
Planta	Uso	Sup.útil	Sup.const.
baja	vivienda	47.70 m²	57.91 m²
	trastero	3.40 m²	4.29 m²
primera	vivienda	32.30 m²	42.02 m²
Total		83.40 m²	104.12 m²
Piscina			10.00 m²
Jardín			45.85 m²
Terraza			20.65 m²
Solarium			37.15 m²



"OUR EXPERIENCE IS YOUR GUARANTEE"