



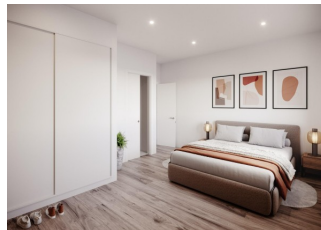
REF: # 11468

VEGA BAJA



INFO

PRICE:	195.000 €
PROPERTY TYPE:	Apartment
CITY:	Vega Baja
BEDROOMS:	3
Bathrooms:	2
Build (m2):	101
Plot (m2):	54
Terrace (m2):	-
Year:	-
Floor:	-
Old price	-



DESCRIPTION

NEW BUILD BUNGALOWS IN HONDON DE LAS NIEVES New Build 4 bungalows located in Hondón de las Nieves (Alicante) All bungalows have 3 bedrooms with fitted wardrobes, 2 bathrooms, large living room, fitted kitchen and terrace. The properties are available on the ground floor with front and rear terrace/garden and on the top floor with terrace and private solarium. The first floor properties have photovoltaic panels on the roof for energy saving. The kitchens are fully furnished and finished with granite or synthetic agglomerate worktops (silestone or similar). The bathrooms are finished with high quality sanitary ware and taps with built-in cistern. These homes have pre-installation for ducted air conditioning with heat pump, forced ventilation with heat recovery, aerothermal system for domestic hot water, the most modern thermal and acoustic insulation, aluminium exterior carpentry with thermal bridge break and shutters. Hondón de las Nieves is a town in the Valencian Community, Spain. It is located in the southwest of the province of Alicante, in the region of Vinalopó Medio. The beaches and Alicante Airport are closely just 30 minutes drive away.

ENERGETIC CERTIFIED



VIEWS

- Panoramic views

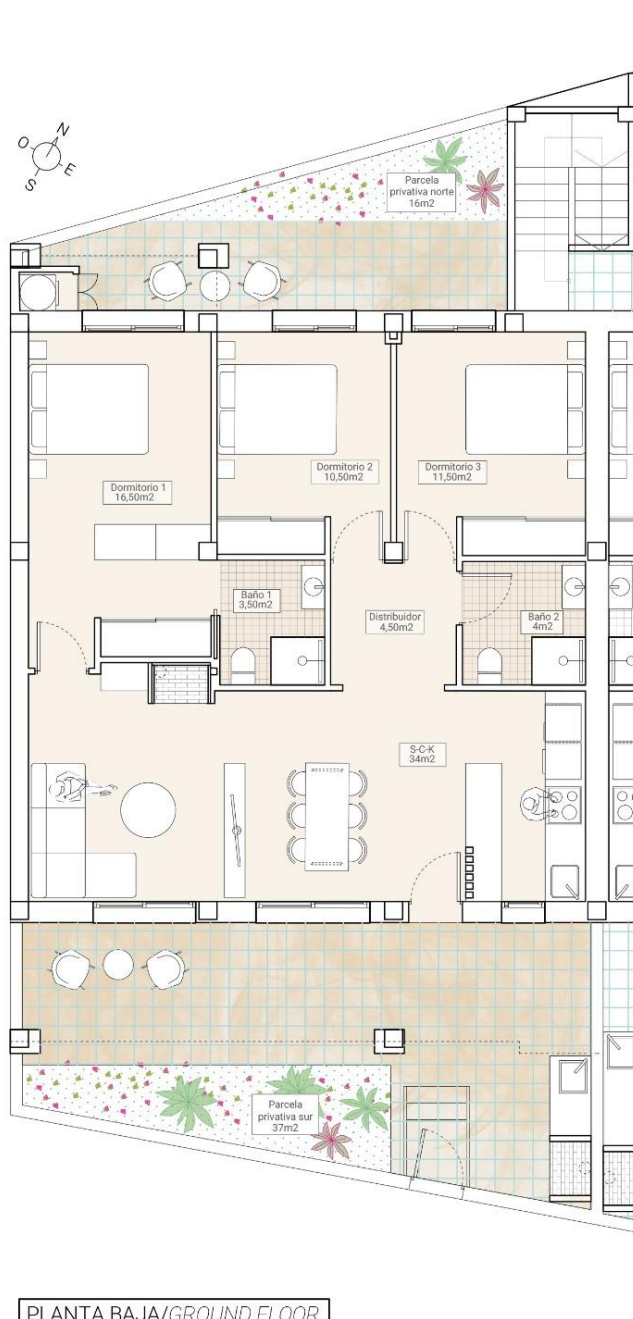
**GARDEN AND
TERRACES**

- Private garden









Tipología/Typology
Vivienda unifamiliar adosada en
planta baja / Duplex Villas

Dormitorios/Bedrooms	3
Baños/Bathrooms	2



Ubicación en el Residencial

PLANTA BAJA/GROUND FLOOR

Superficies útiles/
Useful surfaces

Salón-Comedor-Cocina/Living r. Kitchen	34,00m ²
Distribuidor/Corridor	4,50m ²
Baño1/Bathroom1	3,50m ²
Dormitorio1/Bedroom1	16,50m ²
Baño2/Bathroom2	4,00m ²
Dormitorio2/Bedroom2	10,50m ²
Dormitorio3/Bedroom3	11,50m ²
Zona ajardinada norte/North Garden area	16,00m ²
Zona ajardinada sur/South Garden area	37,00m ²
Superficie útil total/Total useful surface	137,50m ²

VIVIENDA/HOUSE

Superficie construida(vivienda)/Built area	101,00m ²
Superficie útil total/Total useful surfaces	84,50m ²
Superficie jardines/Garden area	53,00 m ²

01





"OUR EXPERIENCE IS YOUR GUARANTEE"