



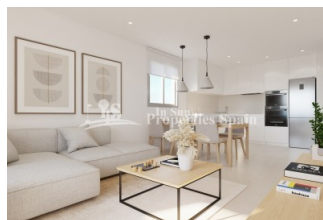
REF: # 11447

ALICANTE (SANTA POLA)



INFO

PRICE:	230.000 €
PROPERTY TYPE:	Apartment
CITY:	Alicante (Santa Pola)
BEDROOMS:	2
Bathrooms:	2
Build (m2):	80
Plot (m2):	-
Terrace (m2):	14
Year:	
Floor:	1
Old price	-



DESCRIPTION

NEW BUILD RESIDENTIAL COMPLEX APARTMENTS IN SANTA POLA - only 150m from the beach! Modern gated residential complex comprising 3 blocks of apartments with large landscaped communal areas including a swimming pool with water beds, children's playground, pergola and bicycle parking. This 80m2 apartment consists of 2 bedrooms, 2 full bathrooms, open plan kitchen with living room, fitted wardrobes, terrace, parking space. There is a lovely communal garden with swimming pool with a beach-type entrance and is equipped with showers and a large wooden pergola. It has landscaped areas with palm trees and vegetation, all of which are illuminated. In the central part of the pool there is a shallower area where the water beds are located. The municipality of Santa Pola is located on the popular Costa Blanca on the Mediterranean, south of Alicante and in the Bajo Vinalopó region. The city is in an enviable geographical position, surrounded by natural landscapes and with a special microclimate, which offers a mild climate all year round. Its urban centre is bounded by the Castle Fortress and the port to the east and west, and is bordered by the Santa Pola Salinas

Natural Park and the Sierra and Cabo de Santa Pola, an ancient reef today characterized by its reef leafy pine trees. Santa Pola located 21 km. from Alicante, the provincial capital with excellent infrastructure and 15km away from the international Airport “Elche-Alicante”.



STYLE	VIEWS	AIRCONDITIONING	DISTANCE TO :
<ul style="list-style-type: none">• Modern	<ul style="list-style-type: none">• Panoramic views	<ul style="list-style-type: none">• Central airconditioning	Beach : 200 m Airport: 20 Km
FURNITURE	PARKING	FLOORING	KITCHEN
<ul style="list-style-type: none">• Not furnished	Parking no Cars: 1	<ul style="list-style-type: none">• Tile floors• Stone floors	<ul style="list-style-type: none">• Open kitchen
GARDEN AND TERRACES	EXTRA		
<ul style="list-style-type: none">• Palm trees• Landscaped• Electric gate• Communal Garden	<ul style="list-style-type: none">• Built in wardrobes• Reinforced door• Double glazed windows		











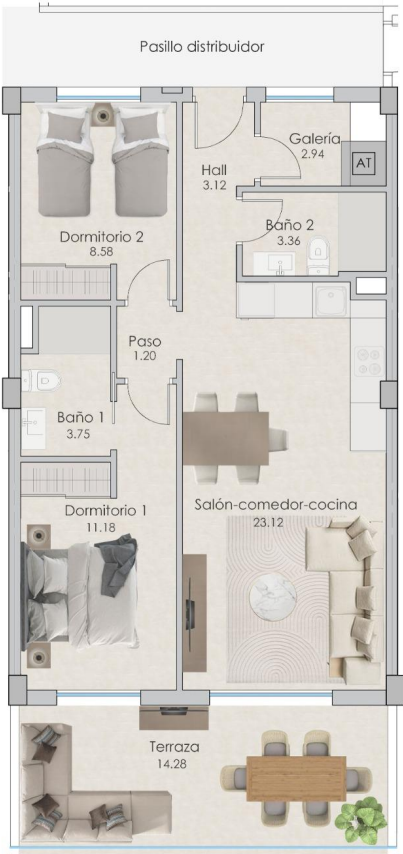


PLANTAS 1,2,3 y 4

VIVIENDAS 2, 3 y 4

SUPERFICIES ÚTILES		SUPERFICIES CONSTRUIDAS	
Viviendas 2, 3 y 4	Hall de acceso	3,12	Cerrada 64,89
	Salón-comedor-cocina	23,12	Abierta 15,75
	Dormitorio 1	11,18	
	Baño 1	3,75	
	Dormitorio 2	8,58	
	Baño 2	3,36	
	Paso	1,20	
	Galería	2,94	
	Terraza	14,28	
TOTAL		71,53	80,64

Las superficies indicadas lo son con carácter informativo, no contractual y pueden sufrir ligeras variaciones por necesidades técnicas del proceso de construcción.









"OUR EXPERIENCE IS YOUR GUARANTEE"