



REF: # 11435

CALPE/MORAIRA



#### INFO

PRICE:	1.890.000 €
PROPERTY TYPE:	Villa
CITY:	Calpe/Moraira
BEDROOMS:	4
Bathrooms:	5
Build ( m2 ):	680
Plot ( m2 ):	1.412
Terrace ( m2 ):	-
Year:	-
Floor:	-
Old price	-



#### DESCRIPTION

**NEW BUILD VILLA IN MORAIRA** New Build Luxury villa located in Moraira in the exclusive area called Moravit. The plot, of considerable size, specifically 1,412 m2, has sea views from both floors, as well as open views of the pine forest. The house is of an exquisite design with high-quality interior finishes. It has a double garage plus a covered parking space, 4 bedrooms, five bathrooms (one exterior) and a guest toilet, a chillout area on the top floor with unbeatable views of the sea, a large area in the basement to finish at the customer's pleasure (in part

said finishing is not included), summer kitchen. The covered constructed area is 680 m2 plus 222 m2 of terraces. The pool is 11m and is overflowing with the water flush with the terrace. Of course, it includes a modern kitchen with an island all electrical appliances, an Aerothermal air conditioning system (underfloor heating and ducted air conditioning), bathroom furniture, built-in wall taps, technical led lighting, large-format porcelain floors, a complete garden with automatic irrigation system etc. Located near the beach, shops, restaurants and services, all less than 1km away. It is a quiet area, being the last house in a cul-de-sac. Moraira is a small town with good restaurants, bars and plenty of supermarkets around. There is a very pleasant beach right next to town that is great for families. The seafront offers tremendous views of Penon Ifach across the bay in Calpe. The coast road getting there is well worth doing with some spectacular views. Moraira situated about 1 hour 15 minutes North up the A7 from Alicante airport its fairly easy to get to. It's about the same distance or a little less South from Valencia airport.



**VIEWS**

- Panoramic views

**GARDEN AND  
TERRACES**

- Private garden















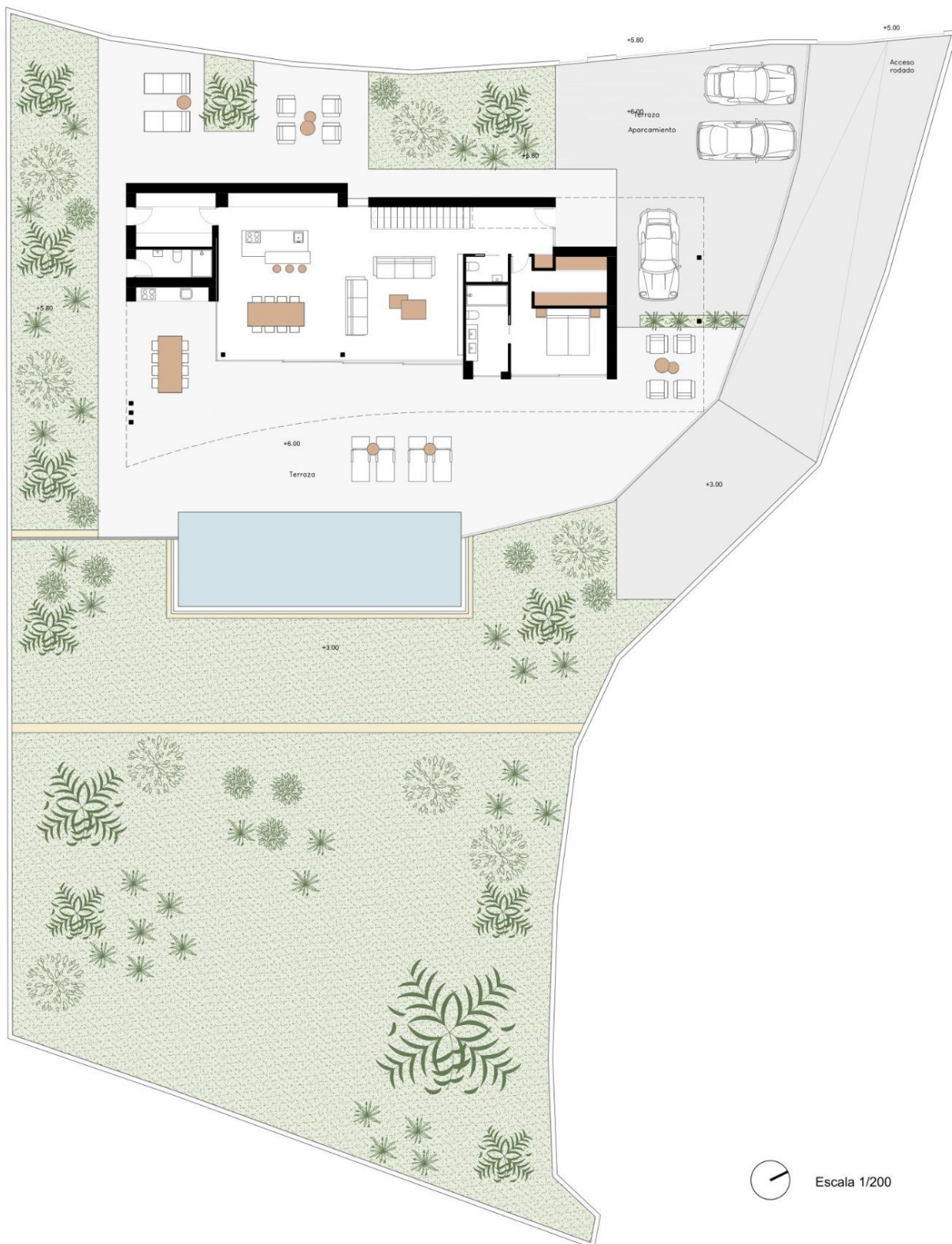






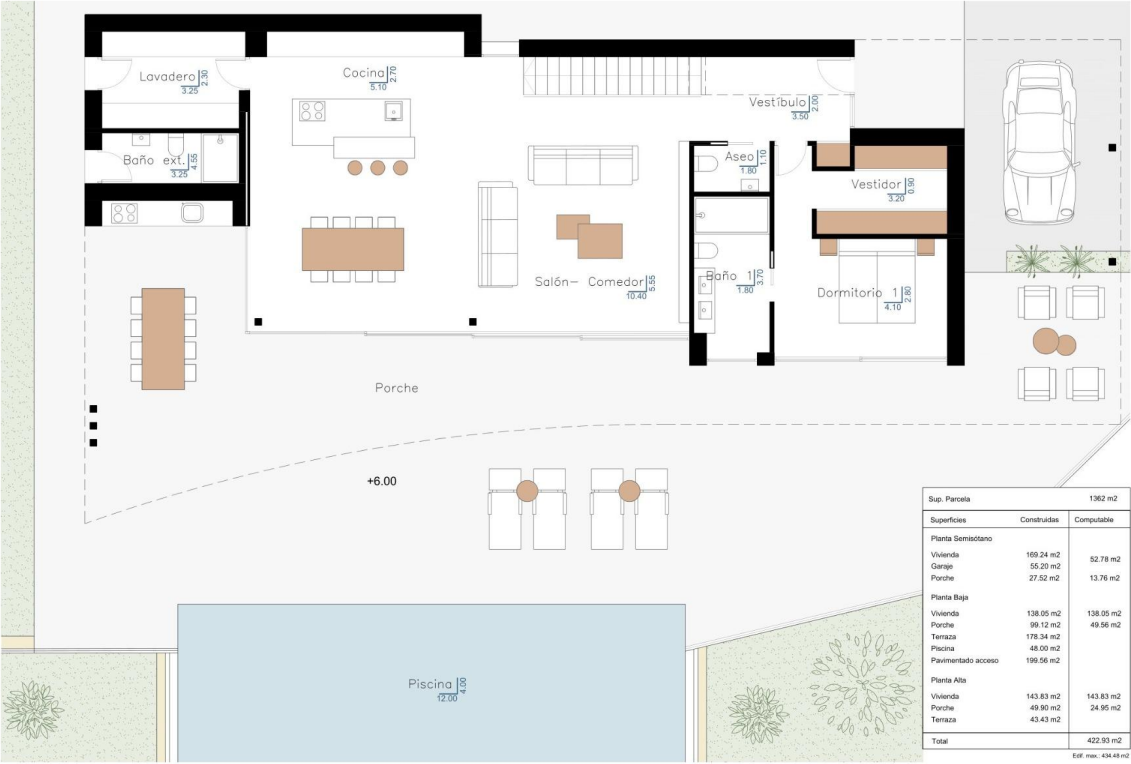




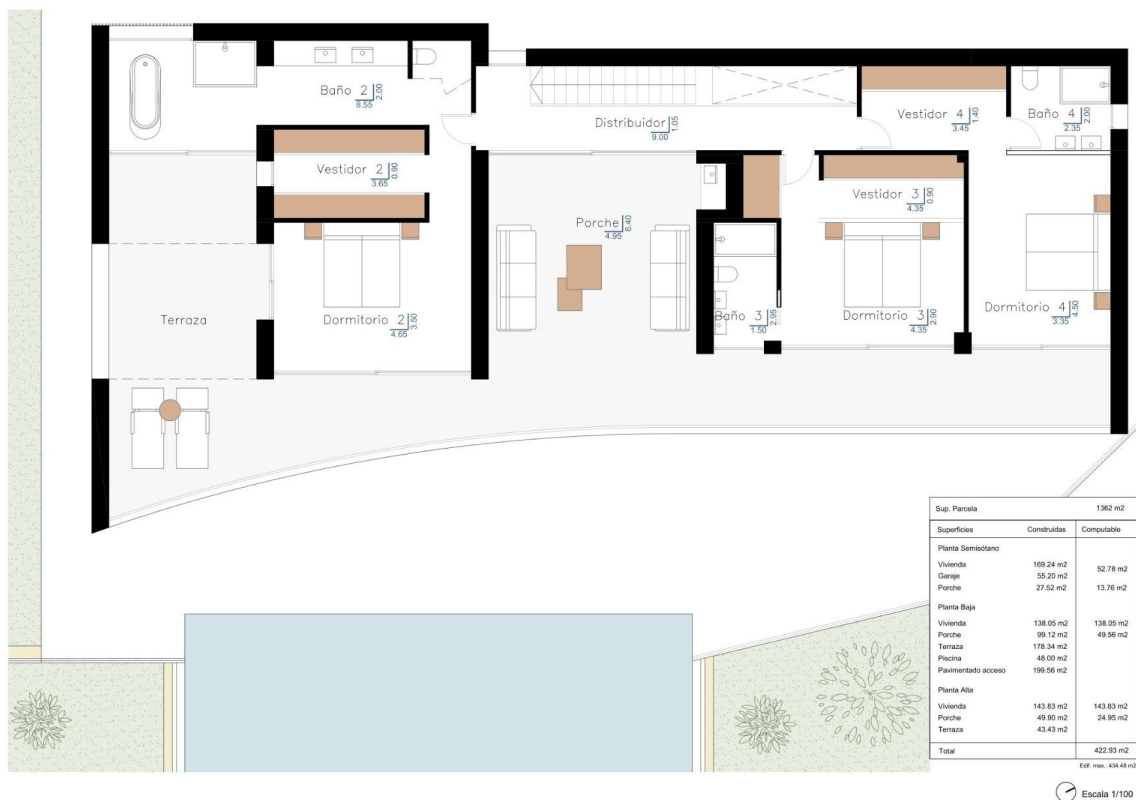




Escala 1/100



Escala 1/100



**"OUR EXPERIENCE IS YOUR GUARANTEE"**