



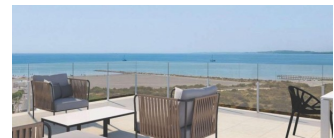
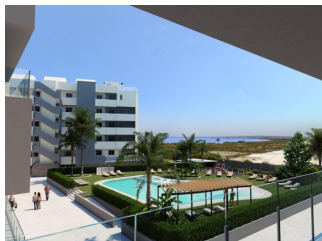
REF: # 11427

ALICANTE (SANTA POLA)



INFO

PRICE:	270.000 €
PROPERTY TYPE:	Apartment
CITY:	Alicante (Santa Pola)
BEDROOMS:	3
Bathrooms:	2
Build (m2):	106
Plot (m2):	-
Terrace (m2):	17
Year:	
Floor:	1
Old price	-



DESCRIPTION

BEAUTIFUL CORNER APARTMENT IN SANTA POLA ALICANTE - with wonderful communal facilities including pool, landscaped gardens and children's playground, only 150m from the beach! This 106m2 apartment consists of 3 bedrooms, 2 full bathrooms, open plan kitchen with living room, fitted wardrobes, 13m2 private terrace and parking. It is situated in a modern gated residential complex comprising 3 blocks of apartments with large landscaped communal areas including a swimming pool with water beds, children's playground, pergola and bicycle parking. There is a beach-type entrance, equipped with showers and a large wooden pergola. It has landscaped areas with palm trees and vegetation, all of which are illuminated. In the central part of the pool there is a shallower area where the water beds are located. The municipality of Santa Pola is located on the popular Costa Blanca on the Mediterranean, south of Alicante and in the Bajo Vinalopó region. The city is in an enviable geographical position, surrounded by natural landscapes and with a special microclimate, which offers a mild climate all year round. Its urban center is bounded by the Castle Fortress and the port to the east and

west, and is bordered by the Santa Pola Salinas Natural Park and the Sierra and Cabo de Santa Pola, an ancient reef today characterized by its reef leafy pine trees. Santa Pola located 21 km. from Alicante, the provincial capital with excellent infrastructure and 15 km. away from the international Airport “Elche-Alicante”.



STYLE <ul style="list-style-type: none">• Modern	VIEWS <ul style="list-style-type: none">• Panoramic views	AIRCONDITIONING <ul style="list-style-type: none">• Central airconditioning	DISTANCE TO : <div>Beach : 200 m</div> <div>Airport: 10 Km</div>
FURNITURE <ul style="list-style-type: none">• Not furnished	PARKING <div>Parking no Cars: 1</div>	FLOORING <ul style="list-style-type: none">• Tile floors• Stone floors	KITCHEN <ul style="list-style-type: none">• Open kitchen
GARDEN AND TERRACES <ul style="list-style-type: none">• Covered terrace• Palm trees• Play Ground• Landscaped• Stone walls• Electric gate• Communal Garden	EXTRA <ul style="list-style-type: none">• Built in wardrobes• Reinforced door• Double glazed windows		



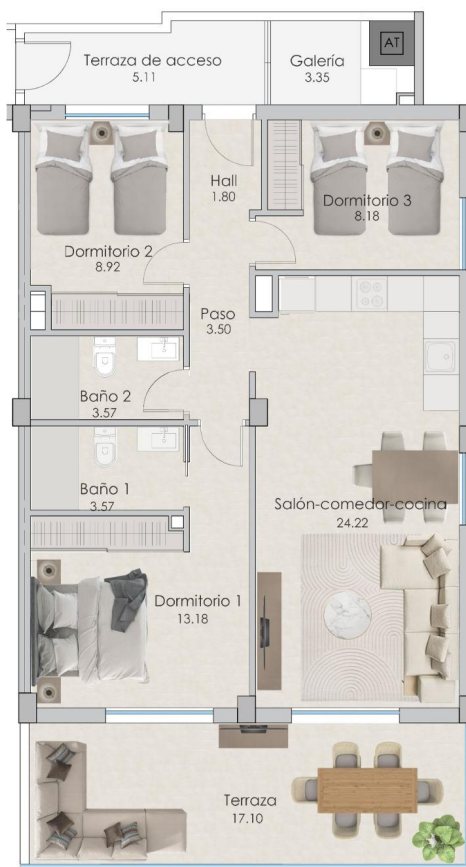




PLANTAS 1,2,3 y 4
VIVIENDAS 1

	SUPERFICIES ÚTILES		SUPERFICIES CONSTRUIDAS	
Viviendas 1 y 5	Hall de acceso	1,80	Cerrada	77,25
	Salón-comedor-cocina	24,22	Abierta	26,80
	Dormitorio 1	13,18		
	Baño 1	3,57		
	Dormitorio 2	8,92		
	Baño 2	3,57		
	Dormitorio 3	8,18		
	Paso	3,50		
	Galería	3,35		
	Terraza	17,10		
	Terraza de acceso	5,11		
	TOTAL	87,39		106,05

Las superficies indicadas lo son con carácter informativo, no contractual y pueden sufrir ligeras variaciones por necesidades técnicas del proceso de construcción.







"OUR EXPERIENCE IS YOUR GUARANTEE"