



REF: # 11325

COSTA MURCIA



#### INFO

PRICE:	370.000 €
PROPERTY TYPE:	Apartment
CITY:	Costa Murcia
BEDROOMS:	2
Bathrooms:	2
Build ( m2 ):	96
Plot ( m2 ):	78
Terrace ( m2 ):	-
Year:	-
Floor:	-
Old price	-



#### DESCRIPTION

**NEW BUILD RESIDENTIAL COMPLEX IN LA MANGA CLUB RESORT**  
New Build exclusive residential of 42 apartments ideal for personal use or investment in on of the famous La Manga Club Resorts. These modern, light-filled residences afford stunning views of the Mar Menor, and their spacious terraces and the community pool let you enjoy the Mediterranean sun to the fullest. These are the last central development of new-build homes at La Manga Club, just a 5-minute walk from all the shops and restaurants. Sports rights are included and each home include a storage facility. One leaf internal doors of 210x82,5x4 cm., of MDF board, pre-lacquered in white, with horizontal slots every 50 cm. Prefabricated imbedded cabinet with sliding doors, of MDF board panelling, pre-lacquered in white. In bathrooms, tiling with porcelain stoneware, size 60 x 30 cm, set on a supporting surface of laminated plasterboard interior wall. In kitchens, tiling with porcelain stoneware tiles, size 60 x 30 cm, set on a supporting surface of laminated plasterboard interior wall. Aerothermal heating system, air conditioning and sanitary hot water. High efficiency fan coils. DOUBLE FLOW mechanically controlled ventilation. Armoured entry door block. White finish. Security Class 3. Folding metallic gate for vehicle access. Manual

opening one-sided metallic gate for pedestrian access. La Manga Club is one of Europe's leading sport and leisure resorts. Bordered by natural parks and unspoilt beaches, its privileged location boasts exclusive holiday and residential accommodation on the Spanish Mediterranean coast. Founded in 1972, La Manga Club is a warm, safe, and vibrant community that has long attracted families and golf lovers with its diverse and outstanding leisure offer. La Manga Club enjoys excellent air connections. The local airports of Corvera (only 50 km away) and Alicante (less than 100 km away) offer regular flights to the rest of Europe, making it easy to arrive and depart from the resort.



**VIEWS**

- Panoramic views

**GARDEN AND  
TERRACES**

- Private garden

## PROPERTY GALLERY











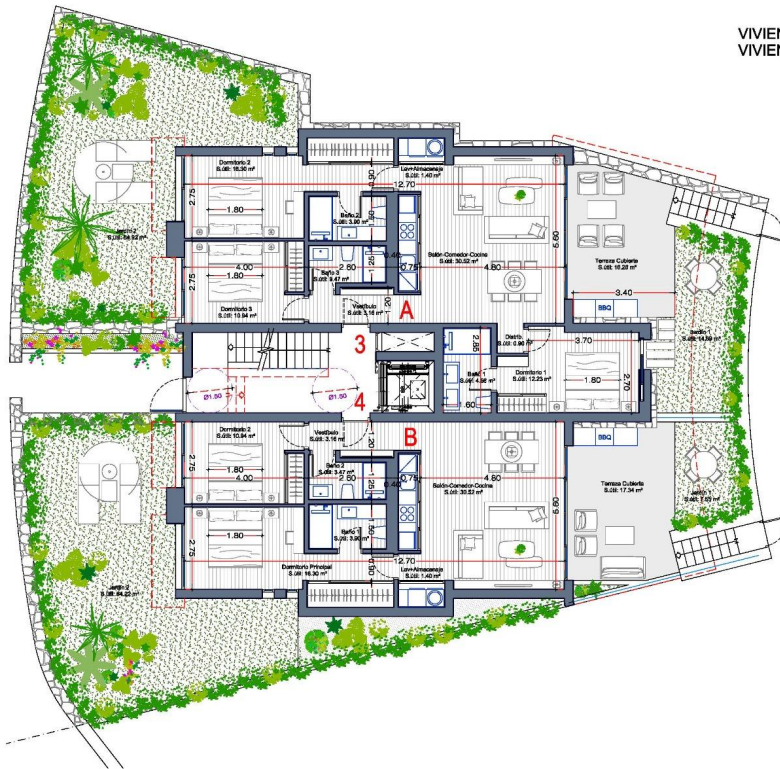






## PLANTA 0

VIVIENDA TIPO A (3 DORMITORIOS) 7 unidades  
VIVIENDA TIPO B (2 DORMITORIOS) 7 unidades



### PLANTA 0. VIVIENDA TIPO A

#### SUPERFICIES CONSTRUIDAS

Vivienda Cerrada	107.00 m <sup>2</sup>
Terraza Cubierta (*)	25.45 m <sup>2</sup>
Jardín 1 (**)	16.85 m <sup>2</sup>
Jardín 2 (**)	65.65 m <sup>2</sup>

(\*) Incluye la parte de jardín cubierta.  
(\*\*) Según vivienda.

### PLANTA 0. VIVIENDA TIPO B

#### SUPERFICIES CONSTRUIDAS

Vivienda Cerrada	84.90 m <sup>2</sup>
Terraza Cubierta (*)	22.65 m <sup>2</sup>
Jardín 1 (**)	10.65 m <sup>2</sup>
Jardín 2 (**)	71.00 m <sup>2</sup>

(\*) Incluye la parte de jardín cubierta.  
(\*\*) Según vivienda.

"OUR EXPERIENCE IS YOUR GUARANTEE"