



REF: # 11299

TORREVIEJA



#### INFO

**PRICE:** 299.900 €

**PROPERTY TYPE:** Apartment

**CITY:** Torrevieja

**BEDROOMS:** 2

**Bathrooms:** 2

**Build ( m2 ):** 70

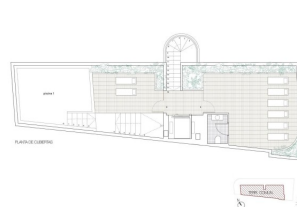
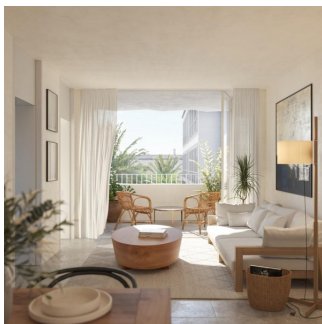
**Plot ( m2 ):** -

**Terrace ( m2 ):** -

**Year:** -

**Floor:** -

**Old price** -



#### DESCRIPTION

**NEW BUILD APARTMENTS AND PENTHOUSES NEAR THE BEACH IN TORREVIEJA** New Build apartments with one of the best locations you can find, located 50 meters from Los Locos beach. Residential consist of apartments with 2 and 3 bedrooms and penthouses with 1 and 2 bedrooms, open plan living with spacious layout, kitchen equipped with top brand appliances and fitted wardrobes, fully equiped bathrooms with underfloor heating. New Build residential complex with modern design and high quality finishes. Torreviejas Playa de Los Locos has pleasant promenade with a variety of bars, restaurants and chiringuitos where you can savour authentic Spanish paellas. Torrevieja is a Spanish town in the province of Alicante, on the Costa Blanca. It is known for its typically Mediterranean climate and coastline. It has boardwalks with resorts along its sandy beaches. The small Museum of the Sea and Salt houses exhibitions on the fishing and salt history of the city. In the interior, the

Lagunas de La Mata-Torrevieja Natural Park has trails and two salty lagoons, one pink and the other green. Alicante airport located 40 minutes away and Murcia airport about 1 hour away.



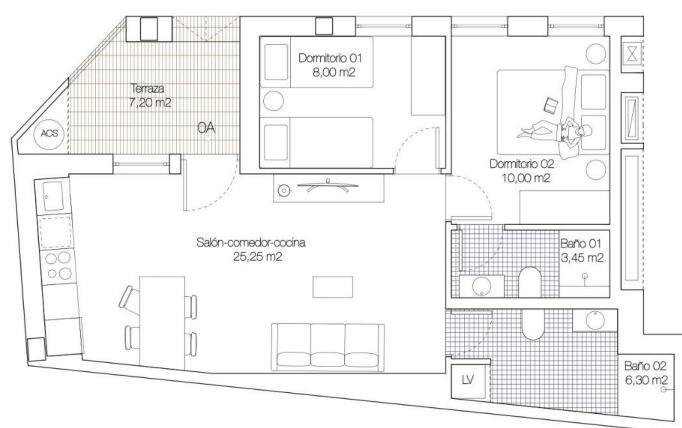
# VIEWS

- Panoramic views









PLANTA BAJA  
2 dormitorios, 2 baños

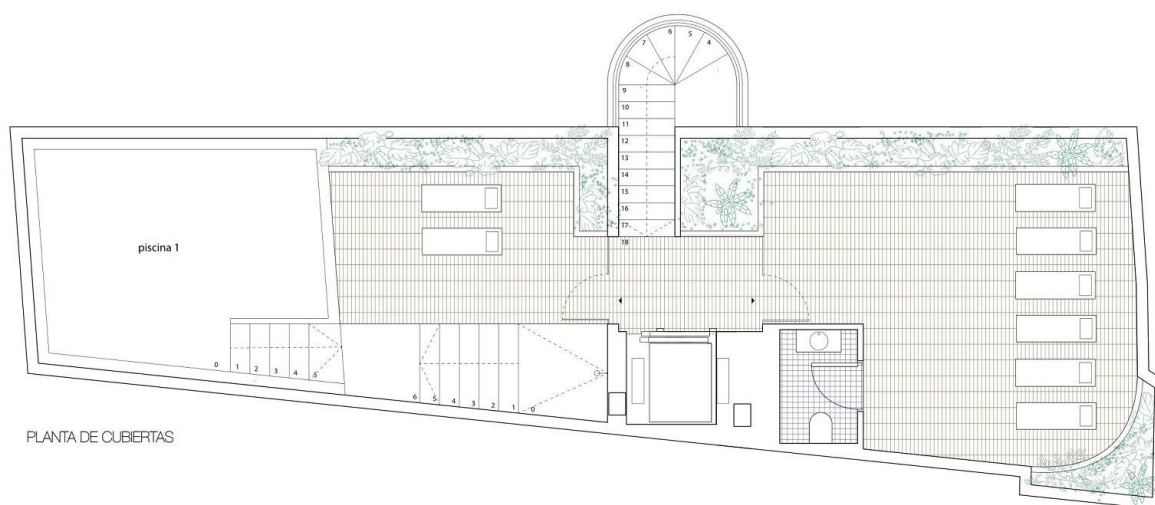
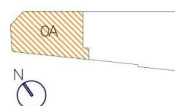
OA

Superficies útiles

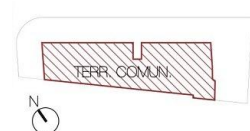
Terraza	7,20 m <sup>2</sup>
Salón-comedor-cocina	25,25 m <sup>2</sup>
Dormitorio 01	8,00 m <sup>2</sup>
Dormitorio 02	10,00 m <sup>2</sup>
Baño 01	3,45 m <sup>2</sup>
Baño 02	6,30 m <sup>2</sup>
Superficie útil TOTAL	60,20 m <sup>2</sup>

Superficies construidas

Terraza	7,20 m <sup>2</sup>
Salón-comedor-cocina	29,65 m <sup>2</sup>
Dormitorio 01	9,70 m <sup>2</sup>
Dormitorio 02	11,00 m <sup>2</sup>
Baño 01	4,15 m <sup>2</sup>
Baño 02	8,35 m <sup>2</sup>
Superficie construida TOTAL	70,05 m <sup>2</sup>



PLANTA DE CUBIERTAS















***"OUR EXPERIENCE IS YOUR GUARANTEE"***