



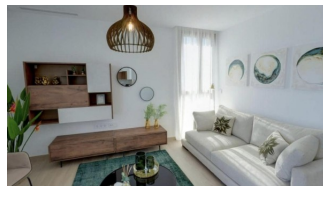
REF: # 11295

COSTA MURCIA (LOS BELONES)



INFO

| | |
|-----------------|-------------------------------|
| PRICE: | 279.950 € |
| PROPERTY TYPE: | Villa |
| CITY: | Costa Murcia (Los Belones) |
| BEDROOMS: | 2 |
| Bathrooms: | 2 |
| Build (m2): | 203 |
| Plot (m2): | 270 |
| Terrace (m2): | - |
| Year: | - |
| Floor: | - |
| Old price | - |



DESCRIPTION

NEW BUILD SEMI-DETACHED VILLAS IN LOS BELONES New Build Semi-detached villas in Los Belones, Mar Menor. Stunning contemporary key ready semi-detached villas with 2 and 3 bedrooms – 3 bathrooms, private swimming pool (7x3) all enjoying views to the sea and coastline set back from the main town of Los Belones, Murcia. Villas (4 in total 2 further to be built) come with a spacious lounge/dining room, fully equipped kitchen, 2 or 3 bedrooms – fitted wardrobes, 3 bathrooms, terrace to the front looking over the pool and bathing area, garden set to the side, off road parking, large rooftop solarium with astonishing coastal views, storage room, and basement-garage on the ground (160 m2). Private garage parking located in the large basement. Pre-installation of Air-Conditioning also with a heat pump but the machines are optional extras. A small signature style development – JUST 4 semi detached and two detached three level contemporary villas – All enjoying generous plot sizes, with private swimming pools, garage-basements and the all important roof solarium boasting glorious sea and coastal views. Los Belones is a highly popular large village just a short drive from the famous La Manga Club and 1 km from sandy beaches of the warm Mar

Menor and 3km to the beautiful Mediterranean sea. The village is a thriving environment typically Spanish offering a great selection of tapas bars, restaurants and an abundance of amenities. Every Tuesday there is a weekly market which is very popular with locals and tourists. Within a 20 minute drive to the historical port of Cartagena. Airports:: Murcia regional airport (Corvera) is 35 minute drive and Alicante airport 75 minute drive.



VIEWS

- Panoramic views

**GARDEN AND
TERRACES**

- Private garden























PLANOS DE PLANTA Y SUPERFICIE / FLOOR AND SURFACES PLANTS



Sótano /
Basement

SUPERFICIES

| | |
|--------------------|----------------------|
| 1. Trastero | 12.61 m ² |
| 2. Garaje | 39.22 m ² |
| 3. Cuarto escalera | 14.64 m ² |



Planta Baja /
Ground Floor

SUPERFICIES

| | |
|------------------------|----------------------|
| 1. Terraza delantera | 70.72 m ² |
| 2. Rampa acceso garaje | 27.00 m ² |
| 3. Acceso vivienda | 14.38 m ² |
| 4. Hall | 2.58 m ² |
| 5. Escalera PB | 7.00 m ² |
| 6. Office | 6.40 m ² |
| 7. Aseo | 3.14 m ² |
| 8. Salon | 21.38 m ² |
| 9. Cocina-Corredor | 11.26 m ² |
| 10. Despensa | 2.36 m ² |
| 11. Terraza Exterior | 74.58 m ² |
| 12. Piscina | 17.62 m ² |



Primera Planta /
First Floor

SUPERFICIES

| | |
|-------------------------|----------------------|
| 1. Acceso a Terraza Sup | 7.90 m ² |
| 2. Distribuidor 2 | 4.34 m ² |
| 3. Dormitorio 1 | 15.10 m ² |
| 4. Dormitorio 2 | 15.50 m ² |
| 5. Escalera P1 | 7.09 m ² |
| 6. Aseo 2 | 4.48 m ² |
| 7. Baño | 5.00 m ² |



Solarium /
Solarium

SUPERFICIES

| | |
|------------|----------------------|
| 1. Terraza | 45.85 m ² |
|------------|----------------------|

"OUR EXPERIENCE IS YOUR GUARANTEE"