



REF: # 11293

COSTA MURCIA (LOS BELONES)



#### INFO

PRICE: 469.950 €

PROPERTY TYPE: Villa

CITY: Costa Murcia  
(Los Belones)

BEDROOMS: 3

Bathrooms: 3

Build ( m2 ): 274

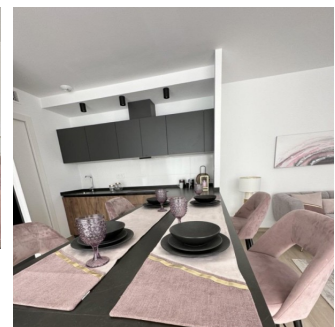
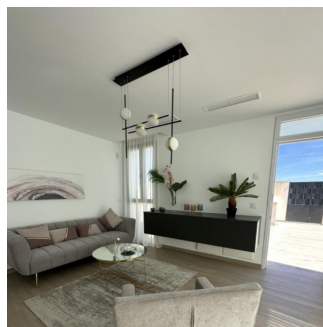
Plot ( m2 ): 360

Terrace ( m2 ): -

Year: -

Floor: -

Old price -



#### DESCRIPTION

**NEW BUILD SEMI-DETACHED VILLAS IN LOS BELONES** New Build Semi-detached villas in Los Belones, Mar Menor. Stunning contemporary semi-detached villas with private swimming pool (7x3) all enjoying views to the sea and coastline set back from the main town of Los Belones, Murcia. Luxury brand new key ready Villa (1 other to be built) with a private pool. This Contemporary high quality build on three levels comprising; Ground Floor 90m2, First Floor 28m2 + Solarium 55m2 and Basement 160m2 (opportunity to create additional living space). The villa has 3 double bedrooms, 3 luxury bathrooms, open plan living area with modern fitted kitchen, breakfast bar / island. Large 'hide and slide' patio doors open up to reveal the large private swimming pool with plenty of surrounding terracing. Airzone A-C is fitted to this key ready villa which can be controlled via an app. Private garage parking located in the large basement. Pre-installation of Air-Conditioning also with a heat pump but

the machines are optional extras. A small signature style development – JUST 4 semi detached and two detached three level contemporary villas – All enjoying generous plot sizes, with private swimming pools, garage-basements and the all important roof solarium boasting glorious sea and coastal views. Los Belones is a highly popular large village just a short drive from the famous La Manga Club and 1 km from sandy beaches of the warm Mar Menor and 3km to the beautiful Mediterranean sea. The village is a thriving environment typically Spanish offering a great selection of tapas bars, restaurants and an abundance of amenities. Every Tuesday there is a weekly market which is very popular with locals and tourists. Within a 20 minute drive to the historical port of Cartagena. Airports:: Murcia regional airport (Corvera) is 35 minute drive and Alicante airport 75 minute drive.



**VIEWS**

- Panoramic views

**GARDEN AND  
TERRACES**

- Private garden









































## PLANOS DE PLANTA Y SUPERFICIE / FLOOR AND SUPERFICIES PLANTS

### Superficies Sótano / Superficies Basement

1. Rampa	51.45 m <sup>2</sup>	5. Instalaciones	1.42 m <sup>2</sup>
2. Rellano garaje	16.22 m <sup>2</sup>	6. Escalera	9.22 m <sup>2</sup>
3. Trastero	46.41 m <sup>2</sup>	7. Garaje	83.58 m <sup>2</sup>
4. Aseo 1	3.15 m <sup>2</sup>		

### Superficies Planta Baja / Superficies Ground Floor

1. Terraza 1	92.26 m <sup>2</sup>	6. Dormitorio 2	10.95 m <sup>2</sup>
2. Salon-cocina	40.12 m <sup>2</sup>	7. Dormitorio 1 + vest	17.04 m <sup>2</sup>
3. Lavandería	3.51 m <sup>2</sup>	8. Pasillo	4.42 m <sup>2</sup>
4. Aseo 2	3.67 m <sup>2</sup>	9. Baño	5.71 m <sup>2</sup>
5. Distribuidor 1	4.51 m <sup>2</sup>	10. Terraza 2	57.93 m <sup>2</sup>

### Superficies Primera Planta + Soalrium / Superficies First Floor + Solarium

1. Terraza	43.98 m <sup>2</sup>	5. Terraza	10.78 m <sup>2</sup>
2. Distribuidor 2	3.17 m <sup>2</sup>		
3. Dormitorio 3	21.05 m <sup>2</sup>		
4. Aseo 2	3.15 m <sup>2</sup>		

### Sótano / Basement



Planta Baja / Ground Floor



Primera Planta + Solarium / First Floor + Solarium



***"OUR EXPERIENCE IS YOUR GUARANTEE"***