



REF: # 11276

FINESTRAT



#### INFO

|                 |             |
|-----------------|-------------|
| PRICE:          | 1.200.000 € |
| PROPERTY TYPE:  | Villa       |
| CITY:           | Finestrat   |
| BEDROOMS:       | 4           |
| Bathrooms:      | 5           |
| Build ( m2 ):   | 425         |
| Plot ( m2 ):    | 430         |
| Terrace ( m2 ): | -           |
| Year:           | -           |
| Floor:          | -           |
| Old price       | -           |



#### DESCRIPTION

##### LUXURY NEW BUILD VILLAS IN FINESTRAT WITH SEA VIEWS

Luxury villas located in New Build residential complex in Finestrat. This villas consist of two floors, a solarium, basement and an interior garden with a private pool. Each villa has its own elevator. The solarium offers a wide and unforgettable view of Benidorm and the sea. These villas are unique for their design and amenities: a large living room, large en-suite bedrooms on the first floor, a solarium to relax and enjoy the sunsets, a contemporary infinity pool and a large terrace for vacations and relaxation. Residential located 5 min by car from all the services that Benidorm can offer and in an environment with an average annual temperature of 20°C and 300 days of sunshine a year, 44 km away from Alicante airport, 3 km from the sea and 200 meters to the golf.

#### ENERGETIC CERTIFIED



**VIEWS**

- Panoramic views

**GARDEN AND  
TERRACES**

- Private garden















PLANTA SÓTANO  
VIV. 3

SUPERFICIES APROXIMADAS TOMADAS DEL PROYECTO BÁSICO QUE PODRÍAN VERSE LIGERAMENTE ALTERADAS DURANTE LA EJECUCIÓN DE LAS OBRAS

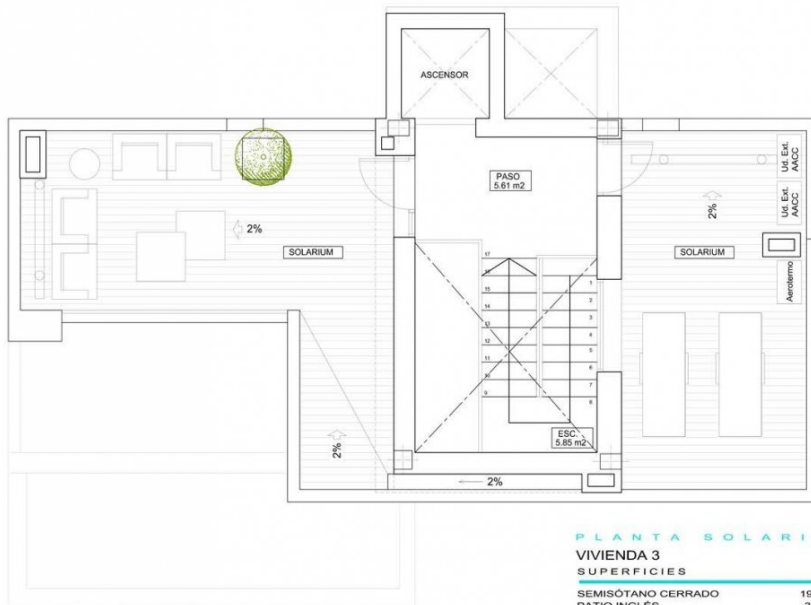
## PLANTA SÓTANO

### VIVIENDA 3 SUPERFICIES

|                                  |                       |
|----------------------------------|-----------------------|
| SEMISÓTANO CERRADO               | 192.56 m <sup>2</sup> |
| PATIO INGLÉS                     | 35.70 m <sup>2</sup>  |
| VIVIENDA CERRADA P. BAJA         | 79.41 m <sup>2</sup>  |
| TERRAZA CUBIERTA P. BAJA         | 14.74 m <sup>2</sup>  |
| VIVIENDA CERRADA P. PRIMERA      | 56.39 m <sup>2</sup>  |
| TERRAZA DESCUBIERTA P. PRIMERA   | 9.87 m <sup>2</sup>   |
| CASETON CUBIERTA                 | 21.24 m <sup>2</sup>  |
| SOLARIUM                         | 39.90 m <sup>2</sup>  |
| TOTAL                            | 449.81 m <sup>2</sup> |
| TERRAZA DESCUBIERTA ZONA PISCINA | 122.76 m <sup>2</sup> |
| SUP. APROX. PISCINA              | 33.50 m <sup>2</sup>  |
| SUP. PARCELA APROX.              | 494 m <sup>2</sup>    |



ESCALA GRÁFICA

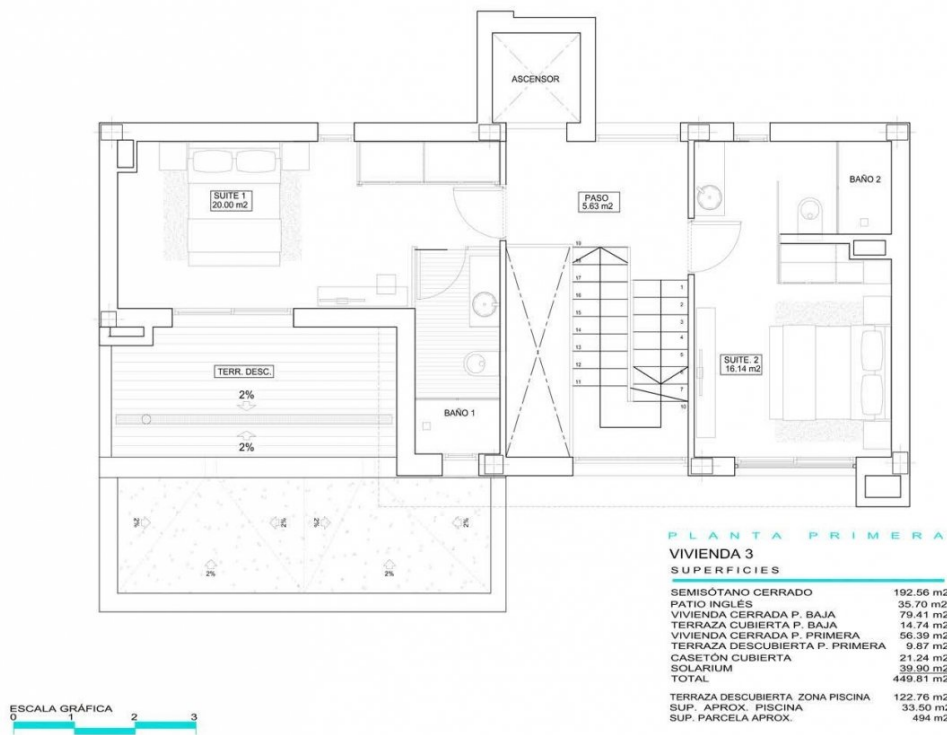


## PLANTA SOLARIUM

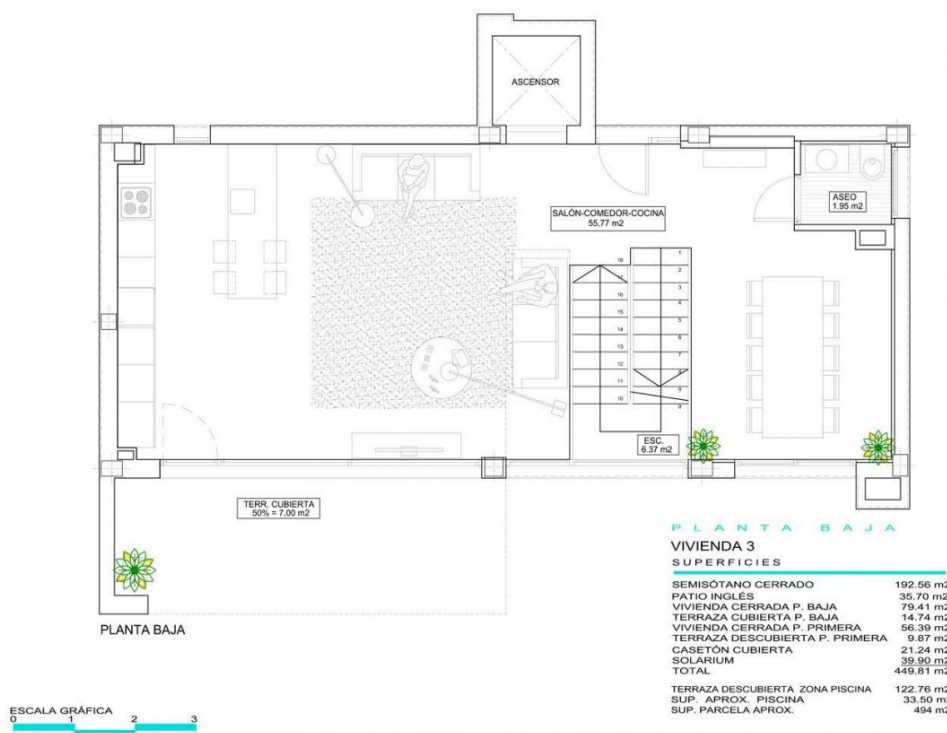
### VIVIENDA 3 SUPERFICIES

|                                  |                       |
|----------------------------------|-----------------------|
| SEMISÓTANO CERRADO               | 192.56 m <sup>2</sup> |
| PATIO INGLÉS                     | 35.70 m <sup>2</sup>  |
| VIVIENDA CERRADA P. BAJA         | 79.41 m <sup>2</sup>  |
| TERRAZA CUBIERTA P. BAJA         | 14.74 m <sup>2</sup>  |
| VIVIENDA CERRADA P. PRIMERA      | 56.39 m <sup>2</sup>  |
| TERRAZA DESCUBIERTA P. PRIMERA   | 9.87 m <sup>2</sup>   |
| CASETON CUBIERTA                 | 21.24 m <sup>2</sup>  |
| SOLARIUM                         | 39.90 m <sup>2</sup>  |
| TOTAL                            | 449.81 m <sup>2</sup> |
| TERRAZA DESCUBIERTA ZONA PISCINA | 122.76 m <sup>2</sup> |
| SUP. APROX. PISCINA              | 33.50 m <sup>2</sup>  |
| SUP. PARCELA APROX.              | 494 m <sup>2</sup>    |

SUPERFICIES APROXIMADAS TOMADAS DEL PROYECTO BÁSICO QUE PODRÍAN VERSE LIGERAMENTE ALTERADAS DURANTE LA EJECUCIÓN DE LAS OBRAS



SUPERFICIES APROXIMADAS TOMADAS DEL PROYECTO BÁSICO QUE PODRÍAN VERSE LIGERAMENTE ALTERADAS DURANTE LA EJECUCIÓN DE LAS OBRAS



SUPERFICIES APROXIMADAS TOMADAS DEL PROYECTO BÁSICO QUE PODRÍAN VERSE LIGERAMENTE ALTERADAS DURANTE LA EJECUCIÓN DE LAS OBRAS

**"OUR EXPERIENCE IS YOUR GUARANTEE"**