



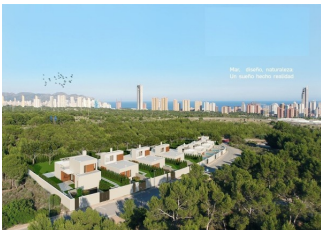
REF: # 11264

FINESTRAT



#### INFO

PRICE:	745.000 €
PROPERTY TYPE:	Villa
CITY:	Finestrat
BEDROOMS:	3
Bathrooms:	3
Build ( m2 ):	203
Plot ( m2 ):	459
Terrace ( m2 ):	-
Year:	-
Floor:	-
Old price	-



#### DESCRIPTION

**NEW BUILD VILLAS IN FINESTRAT** New Build residential of 9 villas in Finestrat, in Sierra Cortina – one of the best urbanizations on Costa Blanca. Residential consist of 4 different types of dwellings adopted from the needs of clients. Some of the models comes build over 1 or 2 floors, with underbuild , solarium. All villas has 3 bedrooms, 2 or 3 bathrooms, open plan kitchen with lounge, build-in wardrobes, air conditioning and aerothermal, equipped kitchen, private garden with pool and parking. Residential located in the Sierra Cortina resort complex, next to two golf courses, theme parks, a large shopping centre and a few minutes from the beaches of Benidorm. Finestrat located in the Marina Baixa region of the Costa Blanca, close to neighbouring Benidorm and about 40 kilometres from the city of Alicante and the international airport. The village is situated on the mountainside of Puig Campana and offers beautiful views of the mountains, the coast and the Mediterranean Sea.

#### ENERGETIC CERTIFIED



**VIEWS**

- Panoramic views

**GARDEN AND  
TERRACES**

- Private garden



VIVIENDA TIPO A

















Entre la naturaleza y el mar.  
A 5 minutos de las playas.







# TIPOLOGIA

## TIPO A

### PLANTA BAJA Y PRIMERA

#### SUPERFICIES DE VIVIENDA

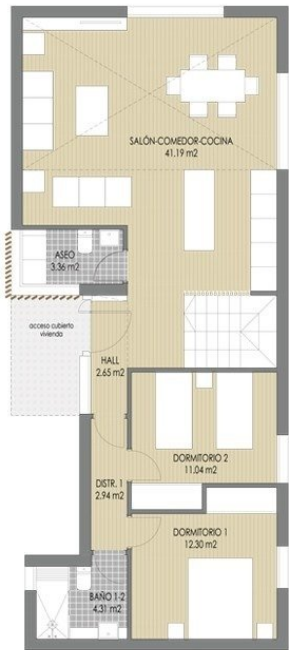
	P.SÓTANO	P.BAJA	P.PRIMERA	TOTAL
SUP. ÚTIL CERRADA	41.07 m²	77.79 m²	24.16 m²	143.02 m²
SUP. ÚTIL ABIERTA	0.00 m²	0.00 m²	18.67 m²	18.67 m²
SUP. ÚTIL TOTAL				161.69 m²
SUP. CONS. CERRADA	49.78 m²	97.22 m²	31.27 m²	178.27 m²
SUP. CONS. ABIERTA	0.00 m²	5.01 m²	19.79 m²	24.80 m²
SUP. CONS. TOTAL				203.07 m²

#### SUPERFICIES DE PARCELA

PARCELA	1	2	3	4	5	6	7	8	9
SUP. m2	439.00	409.43	409.43	409.43	409.43	409.43	409.43	533.40	
SUP. m2 predio urbano	226.54	203.84	203.36	204.93	210.61	218.31	198.58	232.42	437.96

#### ESQUEMA DE VIVIENDAS

The figure is a detailed site plan of a residential development. It shows a grid of nine parcels, labeled PARCELA 1 TIPO A through PARCELA 9 TIPO D. Parcel 1 is highlighted with a red border. Each parcel contains a schematic of the building layout, including courtyards, parking areas, and landscaping. A north arrow is located in the top right corner, pointing towards the top of the page. The parcels are arranged in a roughly rectangular grid, with Parcel 1 at the top left and Parcel 9 at the bottom right.



PLANTA BAJA



PLANTA PRIMERA

NOTA: El presente documento es de carácter informativo. Los planos, imágenes, superficies y cotas expresadas podrán experimentar variaciones por exigencias técnicas del proyecto. Escala gráfica: 0 1 2 3 4 5 6 7m



# TIPOLOGIA

## TIPO A

### PLANTA SÓTANO

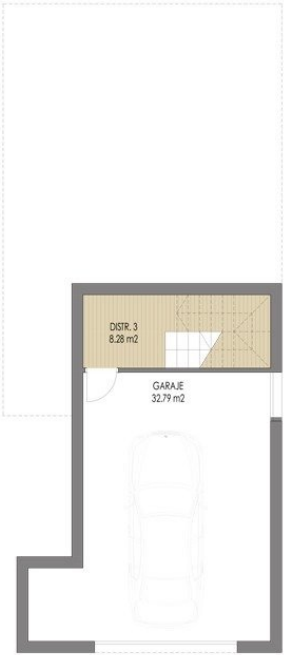
#### SUPERFICIES DE VIVIENDA

	P.SÓTANO	P.BAJA	P.PRIMERA	TOTAL
SUP. ÚTIL CERRADA	41.07 m²	77.79 m²	24.16 m²	143.02 m²
SUP. ÚTIL ABIERTA	0.00 m²	0.00 m²	18.67 m²	18.67 m²
SUP. ÚTIL TOTAL				161.69 m²
SUP. CONS. CERRADA	49.78 m²	97.22 m²	31.27 m²	178.27 m²
SUP. CONS. ABIERTA	0.00 m²	5.01 m²	19.79 m²	24.80 m²
SUP. CONS. TOTAL				203.07 m²

#### SUPERFICIES DE PARCELA

PARCELA	1	2	3	4	5	6	7	8	9
SUP. m2	459.00	409.43	409.43	409.43	409.43	409.43	409.43	409.43	533.40
SUP. m2 jardín-anexo	226.54	203.84	203.36	204.93	210.61	218.31	198.58	232.42	437.56

#### ESQUEMA DE VIVIENDAS

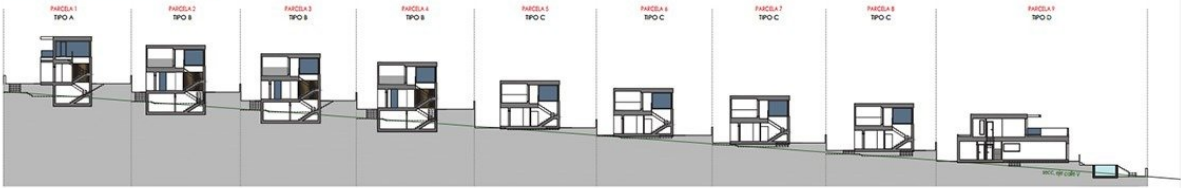


PLANTA SÓTANO

NOTA: El presente documento es de carácter informativo. Los planos, imágenes, superficies y cotas expresadas podrán experimentar variaciones por exigencias técnicas del proyecto. Todo el mobiliario, armarios y electrodomésticos, son meramente decorativos.

Escala gráfica 0 1 2 3 4 5 6 7m

## ORDENACIÓN



Escala gráfica 0 5 10 20

"OUR EXPERIENCE IS YOUR GUARANTEE"