



REF: # 11190

BENITACHELL



INFO

PRICE: 1.824.000 €

PROPERTY TYPE: Villa

CITY: Benitachell

BEDROOMS: 3

Bathrooms: 3

Build (m2): 170

Plot (m2): 819

Terrace (m2): -

Year: -

Floor: -

Old price -



DESCRIPTION

NEW BUILD VILLA WITH THE SEAVIEWS IN CUMBRE DEL SOL In the beautiful and an elevated location, this villa enjoys one of the most spectacular views of the Costa Blanca, views with the sea as the main protagonist, with the Peñón de Ifach and the beauty of the interior. Villa has 3 bedrooms, one of them with an en-suite bathroom and a large dressing room, from which you can enjoy the wonderful views of the sea. Outside, the spaces have been designed to enjoy the benevolent Mediterranean climate, with several outdoor leisure options, a large terrace, an infinity pool, barbecue, garden areas, porches, and a summer dining room. More than 170 m² to enjoy the sun of the Costa Blanca. A perfect villa to become your new main home or to enjoy the summer or long periods, with the main floor ideal for a couple, with its en-suite bedroom, dining room, kitchen, courtesy toilet, to enjoy day to day and a second floor with two other bedrooms, for the children, the visitors, as well as a basement on the ground floor with a private terrace ideal for various uses, gym, office, cinema room, etc. At the most easterly point of the province of Alicante, Spain, lies the Residential Resort Cumbre del Sol. Residents and guests are the first to greet the majestic sun each morning as it rises over the calm waters of the Mediterranean Sea. From

our exclusive viewpoint, on the highest point of the municipality of Benitachell, Cumbre del Sol offers panoramic views over the sea and the natural parks that surround us from Jávea to Moraira. Discover our exclusive resort on the Costa Blanca and discover our wonderful first-class flats and villas, our incredible sports and leisure facilities and our complete range of services for those fortunate enough to make Cumbre del Sol their home. Villa located 65 minutes from Alicante airport and 1,5 hour Valencia airport.



VIEWS

- Panoramic views

**GARDEN AND
TERRACES**

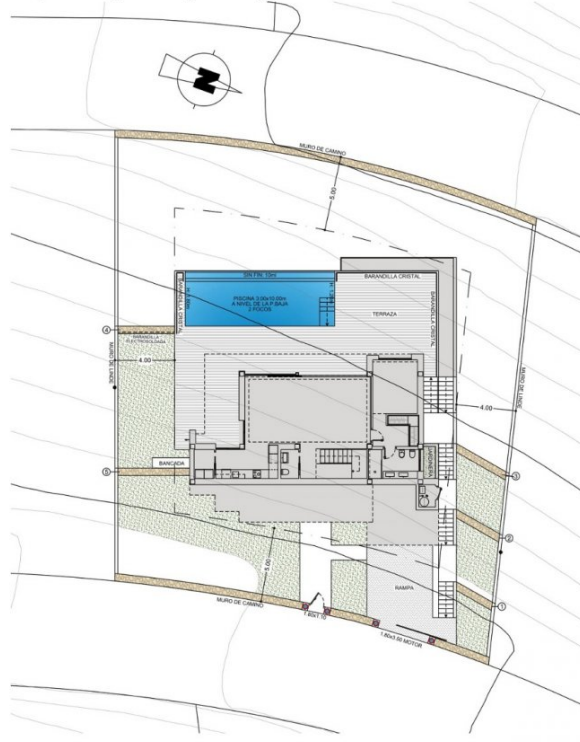
- Private garden







Escala Gráfica



PUNTO DE LUZ

RELLENO

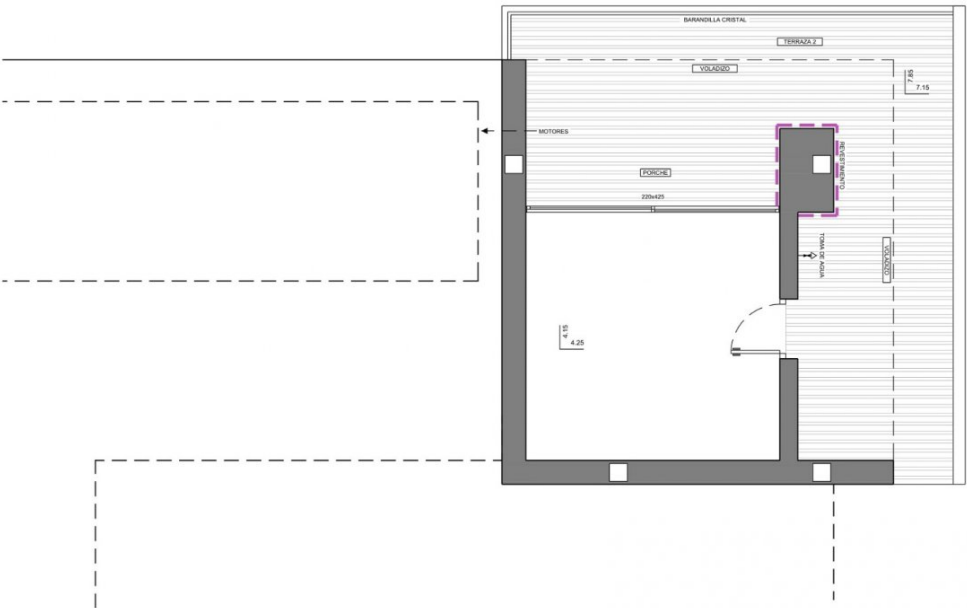
SUPERFICIES CONSTRUIDAS	
TERRAZA	819.00 m²
TERRAZA PISCINA (+8.50)	60.00 m²
RAMPA	33.15 m²
ACCESOS	38.58 m²
JARDINES	2.35 m²
BANCALES	1.15 m²

Escala Gráfica



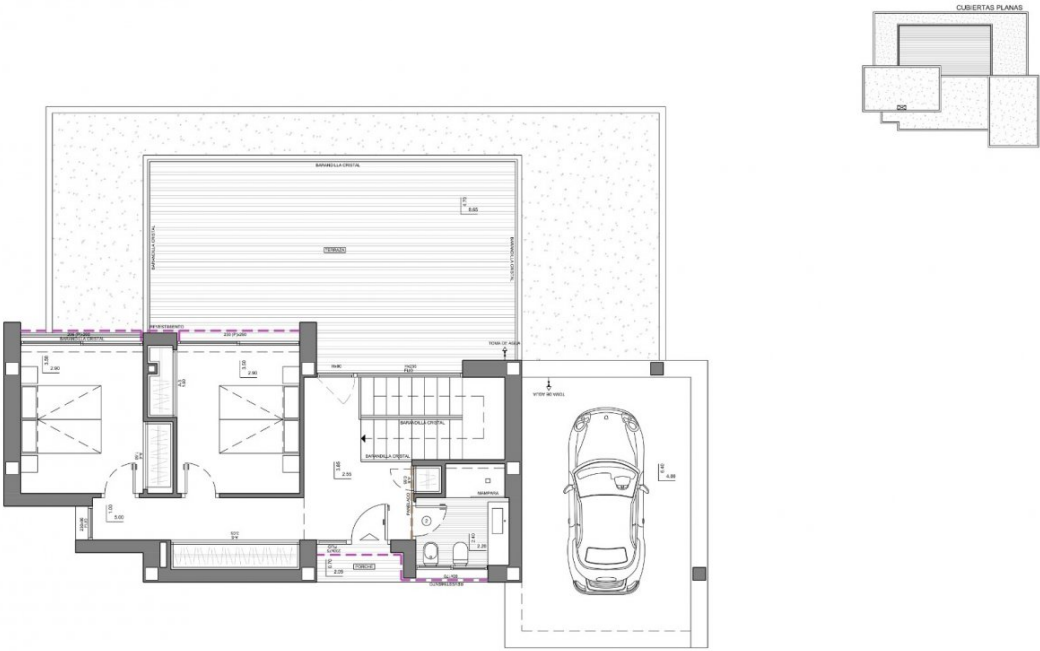
SUPERFICIES CONSTRUIDAS	
VIVIENDA	170.80 m²
PORCHE	1.45 m²
VOLADIZOS	26.95 m²
TERRAZA	40.75 m²
GARAJE ABIERTO	30.58 m²
SALA MAQUINAS	2.95 m²

Escala Gráfica 0 1 2 3 4 5 6m



SUPERFICIES CONSTRUIDAS	23.00 m ²
VACIO SANITARIO	10.00 m ²
PORCHE	28.50 m ²
TERRAZA 2	13.50 m ²
VOLADIZO	

Escala Gráfica 0 1 2 3 4 5 6m



SUPERFICIES CONSTRUIDAS	
EN PLANTA BAJA	





"OUR EXPERIENCE IS YOUR GUARANTEE"