



REF: # 11169

FINESTRAT

VIVIENDA TIPO D



INFO

PRICE: 745.000 €

PROPERTY TYPE: Villa

CITY: Finestrat

BEDROOMS: 3

Bathrooms: 3

Build (m2): 168

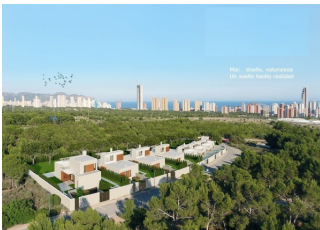
Plot (m2): 533

Terrace (m2): -

Year: -

Floor: -

Old price -



DESCRIPTION

NEW BUILD VILLAS IN FINESTRAT New Build residential of 9 villas in Finestrat, in Sierra Cortina – one of the best urbanizations on Costa Blanca. Residential consist of 4 different types of dwellings adopted from the needs of clients. Some of the models comes build over 1 or 2 floors, with underbuild , solarium. All villas has 3 bedrooms, 2 or 3 bathrooms, open plan kitchen with lounge, build-in wardrobes, air conditioning and aerothermal, equipped kitchen, private garden with pool and parking. Residential located in the Sierra Cortina resort complex, next to two golf courses, theme parks, a large shopping centre and a few minutes from the beaches of Benidorm. Finestrat located in the Marina Baixa region of the Costa Blanca, close to neighbouring Benidorm and about 40 kilometres from the city of Alicante and the international airport. The village is situated on the mountainside of Puig Campana and offers beautiful views of the mountains, the coast and the Mediterranean Sea.

ENERGETIC CERTIFIED



VIEWS

- Panoramic views

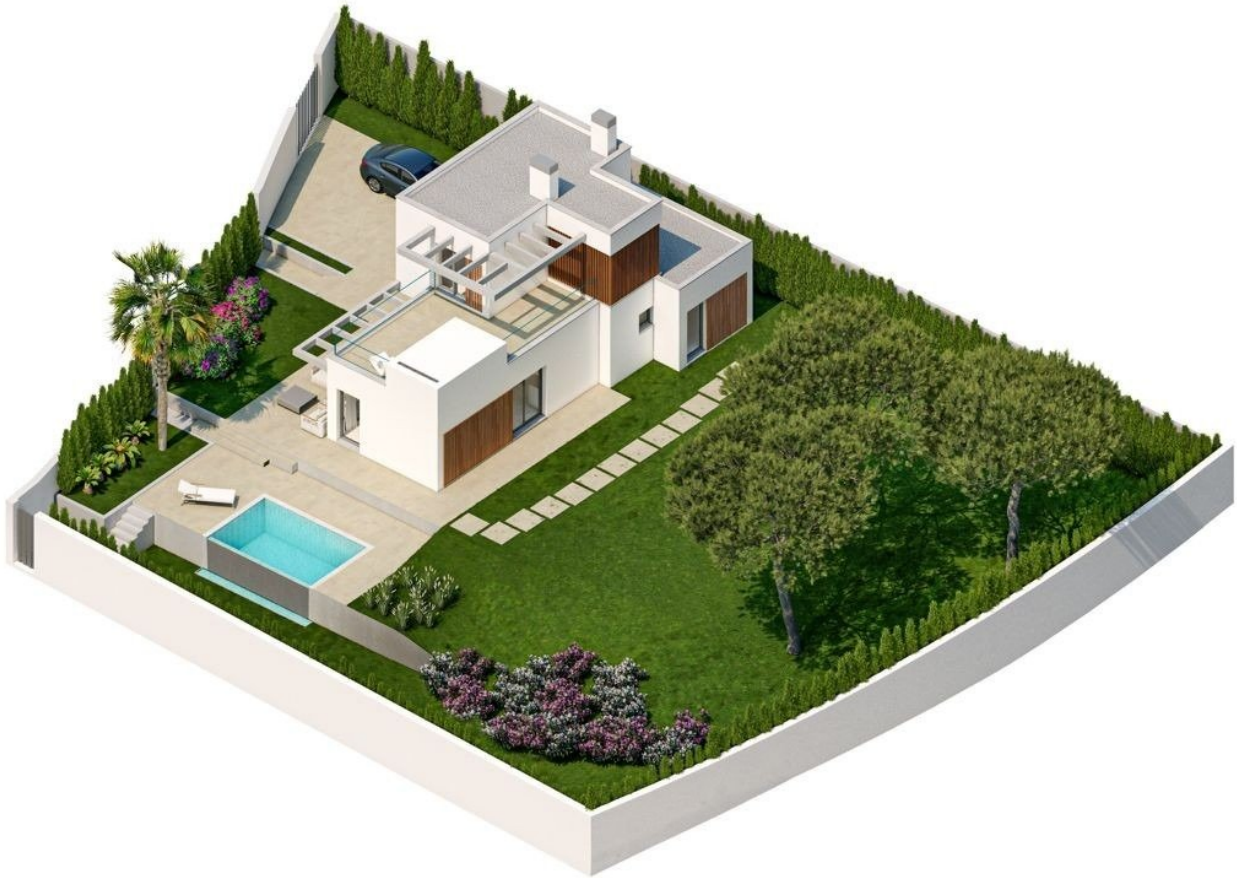
**GARDEN AND
TERRACES**

- Private garden

VIVIENDA TIPO D



Mar, diseño, naturaleza:
Un sueño hecho realidad









Entre la naturaleza y el mar.
A 5 minutos de las playas.



TIPOLOGIA

TIPO D

PLANTAS BAJA Y PRIMERA

SUPERFICIES DE VIVIENDA

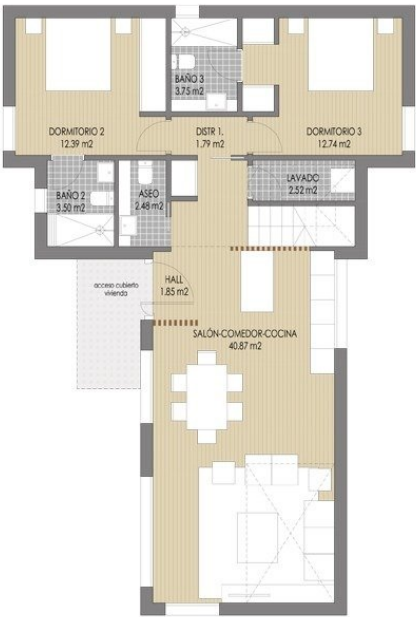
	P.BAJA	P.PRIMERA	TOTAL
SUP. ÚTIL CERRADA	81.89 m²	25.39 m²	107.28 m²
SUP. ÚTIL ABIERTA	0.00 m²	23.73 m²	23.73 m²
SUP. ÚTIL TOTAL			131.01 m²
SUP. CONS. CERRADA	102.54 m²	34.99 m²	137.53 m²
SUP. CONS. ABIERTA	5.01 m²	25.67 m²	30.68 m²
SUP. CONS. TOTAL			168.21 m²

SUPERFICIES DE PARCELA

PARCELA	1	2	3	4	5	6	7	8	9
SUP. m2	459.00	409.43	409.43	409.43	409.43	409.43	409.43	409.43	533.40
SUP. m2 pavimentada	226.54	203.84	203.36	204.93	210.61	218.31	198.58	232.42	437.96

ESQUEMA DE VIVIENDAS

The diagram illustrates the spatial arrangement of the development. The parcels are numbered 1 through 9, corresponding to the data in the table above. Parcel 1 is labeled 'TPO A', while parcels 2 through 9 are labeled 'TPO B' through 'TPO D' respectively. The layout shows a progression of parcels along a curved boundary, with each parcel containing a house footprint and surrounding landscaping. A north arrow is positioned in the upper right corner of the plan.



PLANTA BAJA

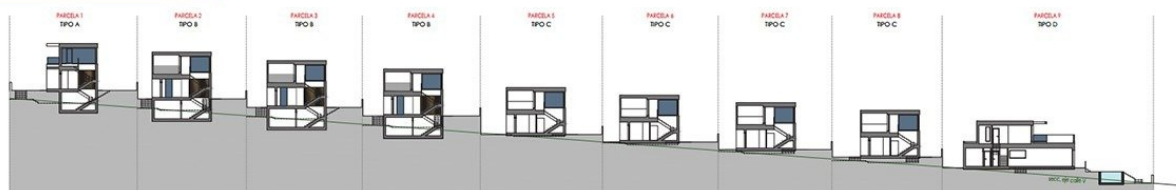


PLANTA PRIMERA

NOTA: El presente documento es de carácter informativo. Los planos, imágenes, superficies y cotas expresadas podrán experimentar variaciones por exigencias técnicas del proyecto. Todo el mobiliario, armarios y electrodomésticos, son meramente decorativos.

Escala gráfica 0 1 2 3 4 5 6 7m

ORDENACIÓN



"OUR EXPERIENCE IS YOUR GUARANTEE"