



REF: # 10993

COSTA MURCIA (SAN PEDRO DEL PINATAR)



#### INFO

PRICE:	217.900 €
PROPERTY TYPE:	Townhouse
CITY:	Costa Murcia (San Pedro del Pinatar)
BEDROOMS:	3
Bathrooms:	2
Build ( m2 ):	111
Plot ( m2 ):	20
Terrace ( m2 ):	-
Year:	-
Floor:	-
Old price	-



#### DESCRIPTION

**NEW BUILD TOWNHOUSES IN SAN PEDRO DEL PINATAR** New Build residential of exclusive set of 3 townhouses with 3 bedrooms, 3 bathrooms designed to offer maximum comfort and functionality in their spaces. Each property has terraces that provide a perfect atmosphere for enjoying outdoors. The dwellings have split air conditioning installation. Kitchen is equipped with appliances, such as oven, microwave, fridge, dishwasher, ceramic hob, and extractor hood. In addition, Residential Almirante includes pre-installation of photovoltaic solar panels, making these homes a sustainable and energy-efficient option. As an extra item you can have the pool or jacuzzi for additional cost. The privileged location of San Pedro del Pinatar on the Mar Menor and the Mediterranean coast attracts those with an interest in sailing and water sports, providing moorings in the marina and yacht clubs, while the beaches and natural mud baths They attract those seeking safe sun, sea and sand. San Pedro del Pinatar has an established community and offers an excellent range of activities, including an indoor swimming pool and sports facilities, as well as a program of social activities throughout

the year due to the pleasant winter climate. The benefits of the mud baths, typical of the region, or the calm waters of the Mar Menor, have favored the growth of Lo Pagán, which currently has all kinds of amenities. In addition, it has an excellent location, just 5 minutes from the Dos Mares Shopping Center. Murcia/Corvera airport is 30 minutes away and Alicante airport is an hour's drive away.



**VIEWS**

- Panoramic views

**GARDEN AND  
TERRACES**

- Open terrace
- Private garden

**EXTRA**

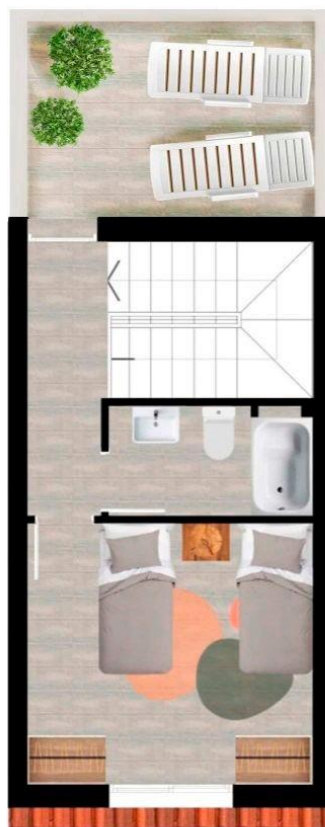
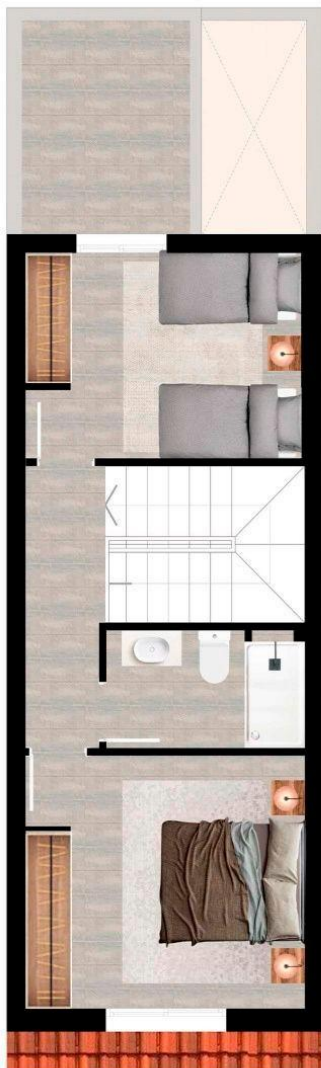
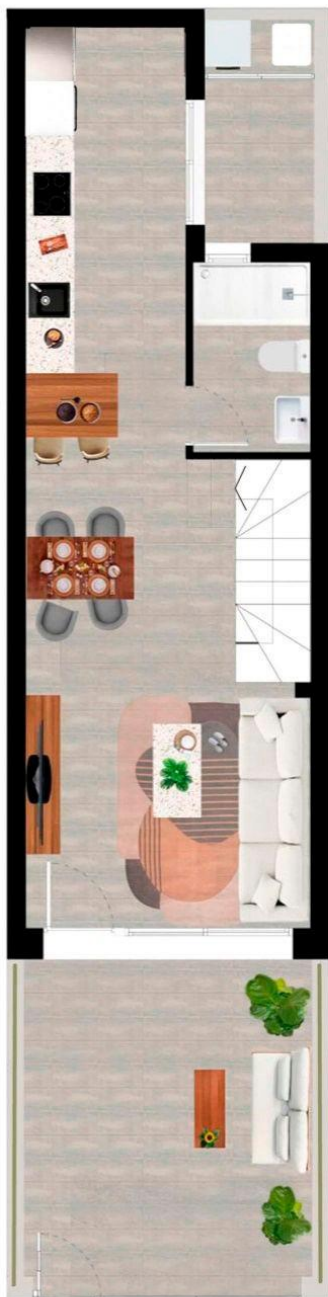
- Reinforced door











## VIVIENDA 1

### PLANTA BAJA

Sup. Vivienda 45,80m<sup>2</sup>

Sup. Terrazas 20,10m<sup>2</sup>

### PLANTA PRIMERA

Sup. Vivienda 40,30m<sup>2</sup>

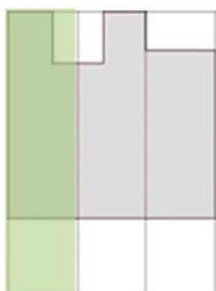
Sup. Terraza 7,05m<sup>2</sup>

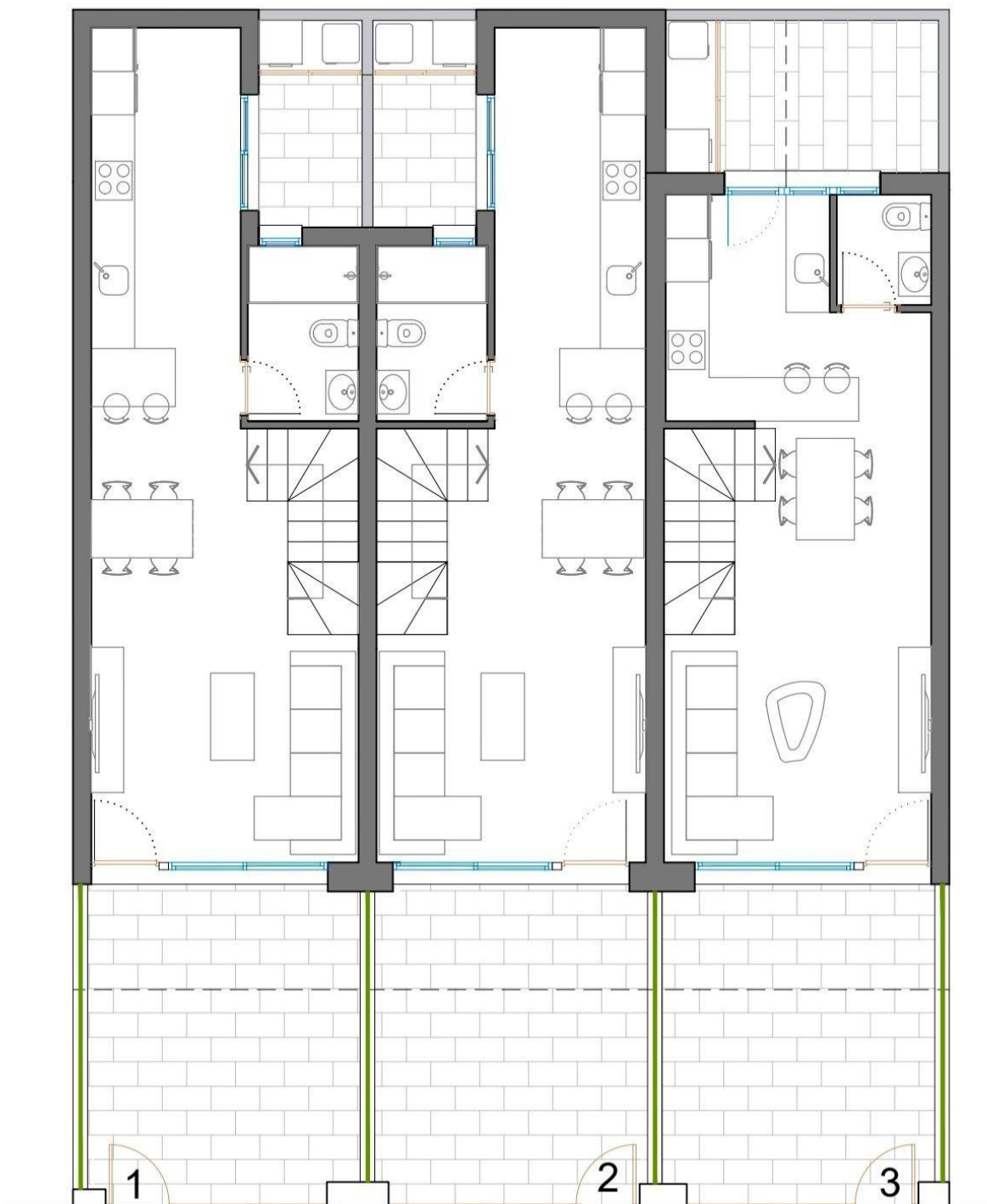
### PLANTA SEGUNDA

Sup. Vivienda 29,80m<sup>2</sup>

Sup. Terraza 11,05m<sup>2</sup>

TOTAL SUP 154,10m<sup>2</sup>













***"OUR EXPERIENCE IS YOUR GUARANTEE"***