



REF: # 10637

BENITACHELL



#### INFO

PRICE: 1.745.000 €

PROPERTY TYPE: Villa

CITY: Benitachell

BEDROOMS: 3

Bathrooms: 4

Build ( m2 ): 181

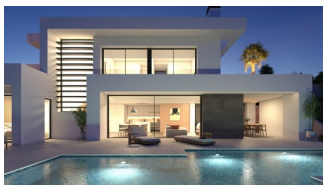
Plot ( m2 ): 824

Terrace ( m2 ): -

Year: -

Floor: -

Old price -



#### DESCRIPTION

NEW BUILD VILLA WITH THE SEA VIEWS IN CUMBRE DEL SOL New Build luxury villa with private pool and sea views in the Residential Resort Cumbre del Sol, in Benitachell, on the Costa Blanca North, between Alicante and Valencia city. A modern design and an elegant and bright layout are the keys to this villa with 3 bedrooms, all with en-suite bathrooms, with the master bedroom also having a large dressing room. The ground floor of this property allows us to extend it to 4 bedrooms. The main floor is characterised by open-plan spaces, where the kitchen and living-dining room are joined together and open onto the main terrace with a beautiful private infinity pool and the porch. Its layout and design have been conceived to make the most of the sea views, both from the bedrooms and from the living-dining room. At the same time, special attention has been paid to privacy, incorporating a vertical wall that not only provides privacy to the main terrace, but also stands out as a decorative element. A comfortable and sustainable villa, with underfloor heating through aerothermal heating, fireplace, installation of a self-consumption photovoltaic system, pre-installation of the necessary plug for charging electric cars, selection of materials that provide quality and warmth to the house. At the most easterly point of the province of

Alicante, Spain, lies the Residential Resort Cumbre del Sol. Residents and guests are the first to greet the majestic sun each morning as it rises over the calm waters of the Mediterranean Sea. From our exclusive viewpoint, on the highest point of the municipality of Benitachell, Cumbre del Sol offers panoramic views over the sea and the natural parks that surround us from Jávea to Moraira. Discover exclusive resort on the Costa Blanca and discover our wonderful first-class flats and villas, incredible sports and leisure facilities and complete range of services for those fortunate enough to make Cumbre del Sol their home. Benitachell located 65 minutes from Alicante airport and 1,5 hour Valencia airport.



**VIEWS**

- Panoramic views

**GARDEN AND  
TERRACES**

- Open terrace
- Private garden

**EXTRA**

- Reinforced door
- Storage room



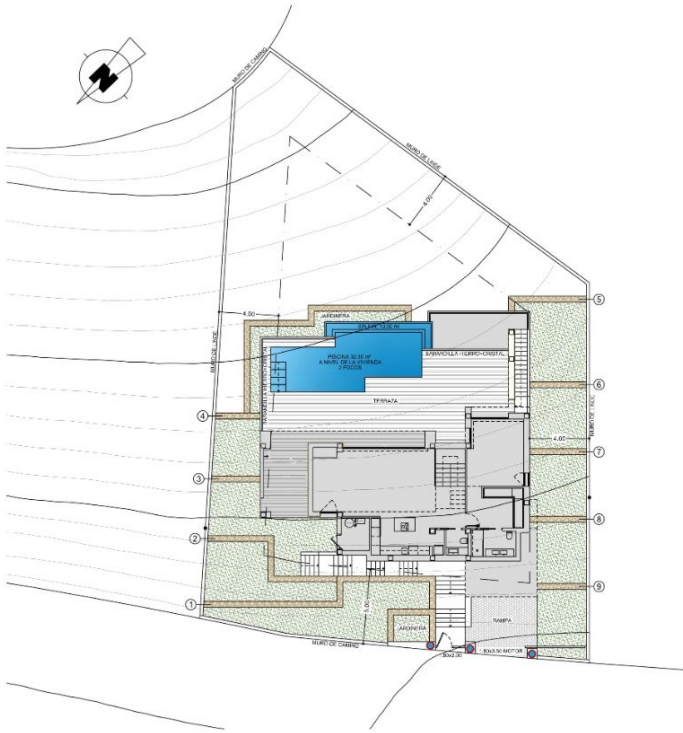








Escala Gráfica 0 5 10 15 20m

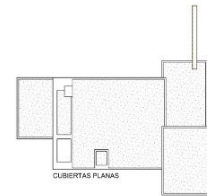
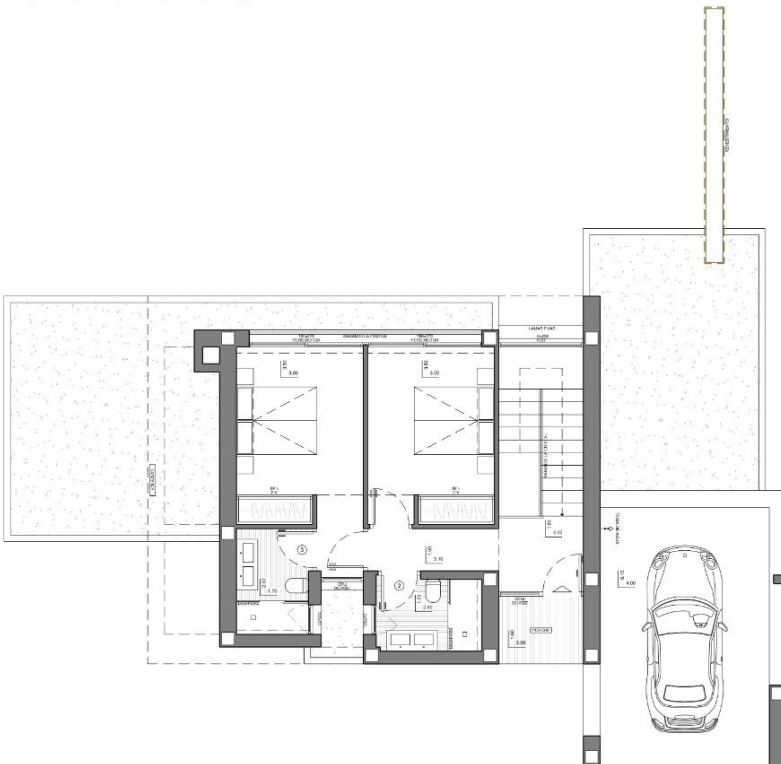


PUNTO DE LUZ

RELLENO

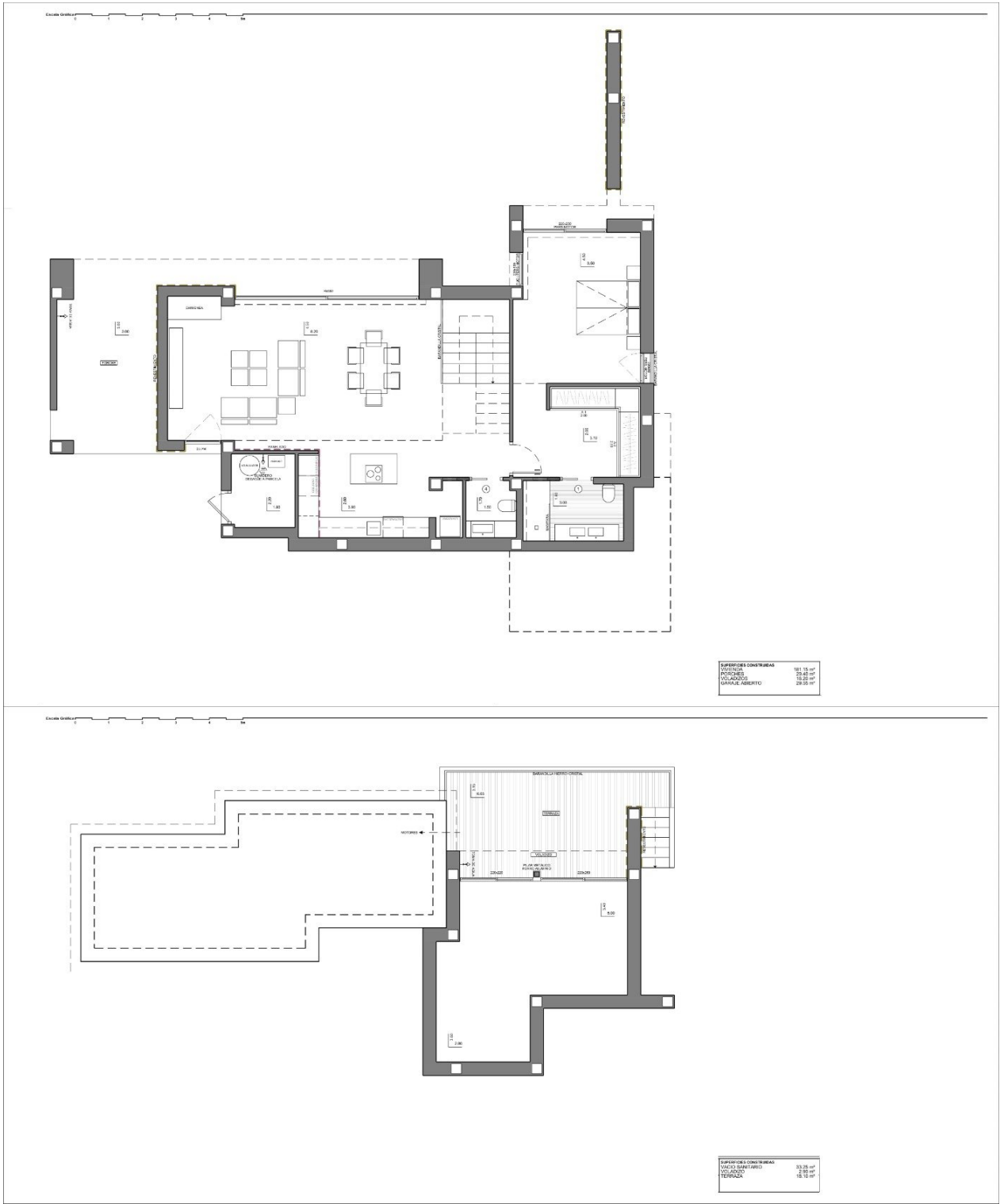
SUPERFICIES CONSTRUIDAS	
PARCELA	824.00 m <sup>2</sup>
TERRAZA PISCINA (+11.25)	66.65 m <sup>2</sup>
ACUÑA	17.50 m <sup>2</sup>
ACEROS	68.99 m <sup>2</sup>
JARDINES	30.84 m <sup>2</sup>

Escala Gráfica 0 5 10 15 20m



CUBERTAS PLANAS

SUPERFICIES CONSTRUIDAS  
EN PLANTA BAJA



**"OUR EXPERIENCE IS YOUR GUARANTEE"**