



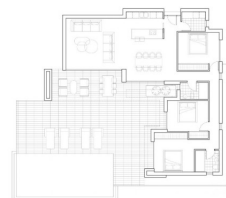
REF: # 10524

CALPE/MORAIRA



INFO

| | |
|-----------------|---------------|
| PRICE: | 685.000 € |
| PROPERTY TYPE: | Villa |
| CITY: | Calpe/Moraira |
| BEDROOMS: | 3 |
| Bathrooms: | 2 |
| Build (m2): | 138 |
| Plot (m2): | 1.000 |
| Terrace (m2): | - |
| Year: | - |
| Floor: | - |
| Old price | - |



DESCRIPTION

NEW BUILD VILLA IN MORAIRA New Build villa 15 min walk from Moraira. This modern style New Build villa has 3 bedrooms, 1 bathroom and 1 toilet distributed on one floor. It has a spacious open plan living-dining-kitchen and a utility room. The kitchen is fully equipped and has a cooking island. It has air conditioning throughout the house and central heating. Automatic entrance gate with separate pedestrian entrance and intercom. On the same level as the main house is the infinity pool and a large terrace. Moraira is a small town with good restaurants, bars and plenty of supermarkets around. There is a very pleasant beach right next to town that is great for families. The seafront offers tremendous views of Penon Ifach across the bay in Calpe. The coast road getting there is well worth doing with some spectacular views. Moraira situated about 1 hour 15 minutes North up the A7 from Alicante airport its fairly easy to get to. It's about the same distance or a little less South from Valencia airport.

ENERGETIC CERTIFIED



VIEWS

- Panoramic views

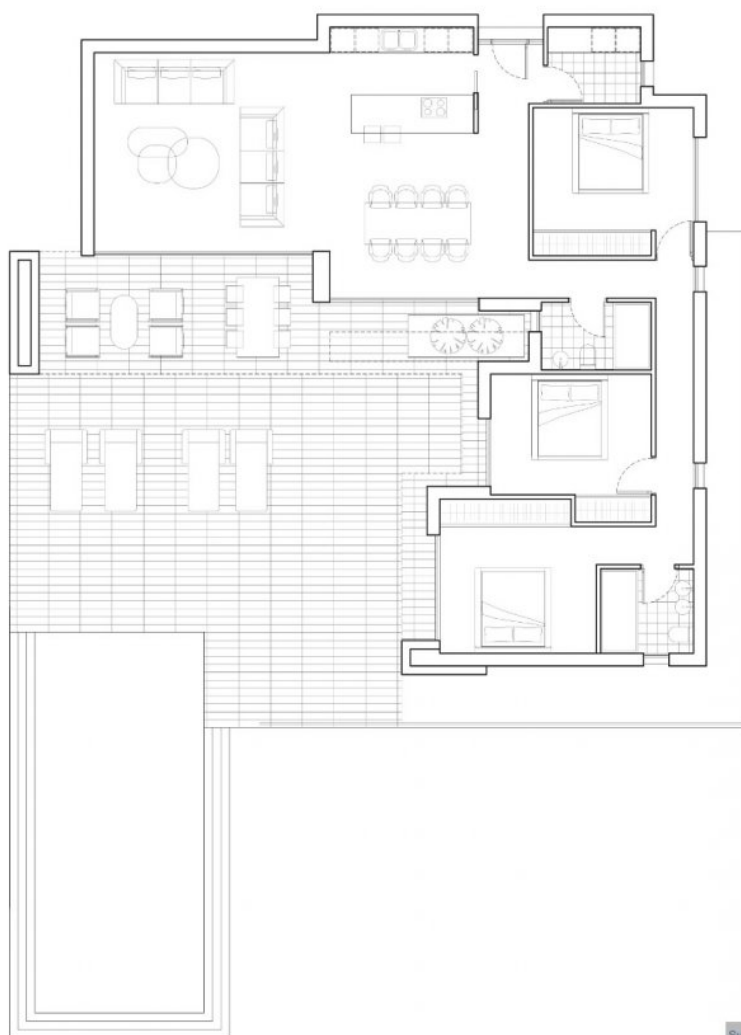
**GARDEN AND
TERRACES**

- Open terrace
- Private garden

EXTRA

- Reinforced door

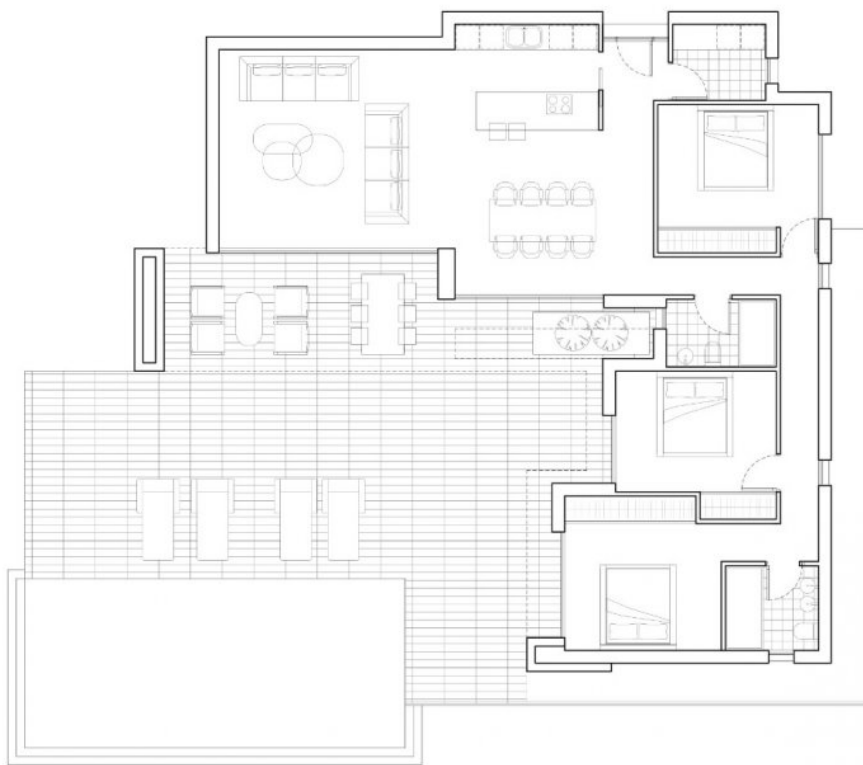




| Superficies | Construidas |
|---------------------|----------------------|
| PLANTA BAJA | |
| VIVIENDA | 138.82m ² |
| PORCHE | 20.08m ² |
| PERGOLA | 8.07m ² |
| VOLADIZO | 3.98m ² |
| TERRAZAS | 70.14m ² |
| PISCINA | 36.00m ² |
| ACABADOS EXTERIORES | |
| ACERA | 63.50m ² |
| HORM. IMPRESO | 113.36m ² |

PLANTA BAJA
VIVIENDA 2





| Superficies | Construidas |
|---------------------|-------------|
| PLANTA BAJA | |
| VIVIENDA | 138.82m2 |
| PORCHE | 20.08m2 |
| PERGOLA | 8.07m2 |
| VOLADIZO | 3.98m2 |
| TERRAZAS | 70.14m2 |
| PISCINA | 36.00m2 |
| ACABADOS EXTERIORES | |
| ACERA | 63.50m2 |
| HORM. IMPRESO | 113.36m2 |

PLANTA BAJA
VIVIENDA 1

E: 1 / 100



EMPLAZAMIENTO 
E: 1/250





"OUR EXPERIENCE IS YOUR GUARANTEE"