



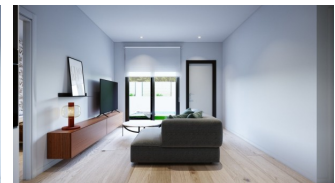
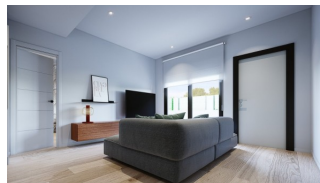
REF: # 10454

COSTA MURCIA (PUEBLO)



INFO

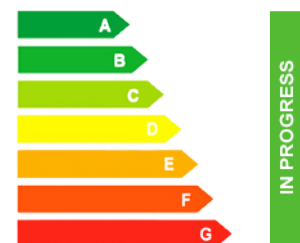
PRICE:	264.000 €
PROPERTY TYPE:	Townhouse
CITY:	Costa Murcia (Pueblo)
BEDROOMS:	3
Bathrooms:	2
Build (m2):	90
Plot (m2):	170
Terrace (m2):	50
Year:	
Floor:	1
Old price	-



DESCRIPTION

FANTASTIC VILLA WITH PRIVATE POOL & GARDEN - CLOSE TO RODA GOLF COURSE This 90m2 consists of 3 bedrooms, 2 fitted bathrooms, 50m2 solarium, open plan fitted kitchen and lounge-dining room, private pool and garden all designed with a contemporary style. The property will meet the highest standards and will be equipped with: Private pool with shower, Solarium with summer kitchen, Terrace areas, Fitted kitchen with fridge freezer, hobs, oven, fan-extractor. Island work zone. Fully fitted bathrooms with vanity unit, mirror and shower screens. Lined fitted wardrobes with drawers. Lighting design inside and outside the house and pre-installation for air conditioning. Located in a Luxury complex of 28 these one level terraced villas are designed to allow you to enjoy all hours of sunshine, every day of the year. The development is in Dolores de Pacheco (Murcia), near Los Alcázares, surrounded by services, parks, sports facilities, near several Golf Courses such as Roda Golf and La Serena Golf, plus being 5 minutes far from beach.

ENERGETIC CERTIFIED



STYLE <ul style="list-style-type: none">• Modern• Contemporary	VIEWS <ul style="list-style-type: none">• Panoramic views	AIRCONDITIONING <ul style="list-style-type: none">• Central airconditioning	DISTANCE TO : <div>Beach : 4 Km</div> <div>Airport: 40 Km</div>
FURNITURE <ul style="list-style-type: none">• Not furnished	PARKING <div>Parking no Cars: 1</div>	FLOORING <ul style="list-style-type: none">• Tile floors• Stone floors	KITCHEN <ul style="list-style-type: none">• Open kitchen• Equipped kitchen
GARDEN AND TERRACES <ul style="list-style-type: none">• Open terrace• Exterior lights• Outdoor kitchen• Private garden	EXTRA <ul style="list-style-type: none">• Built in wardrobes• Reinforced door• Double glazed windows• Door bell with camera		





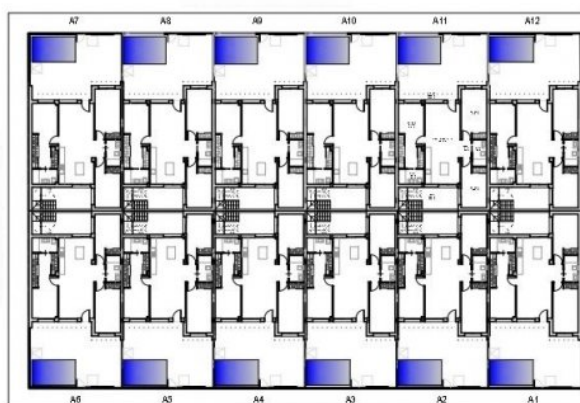
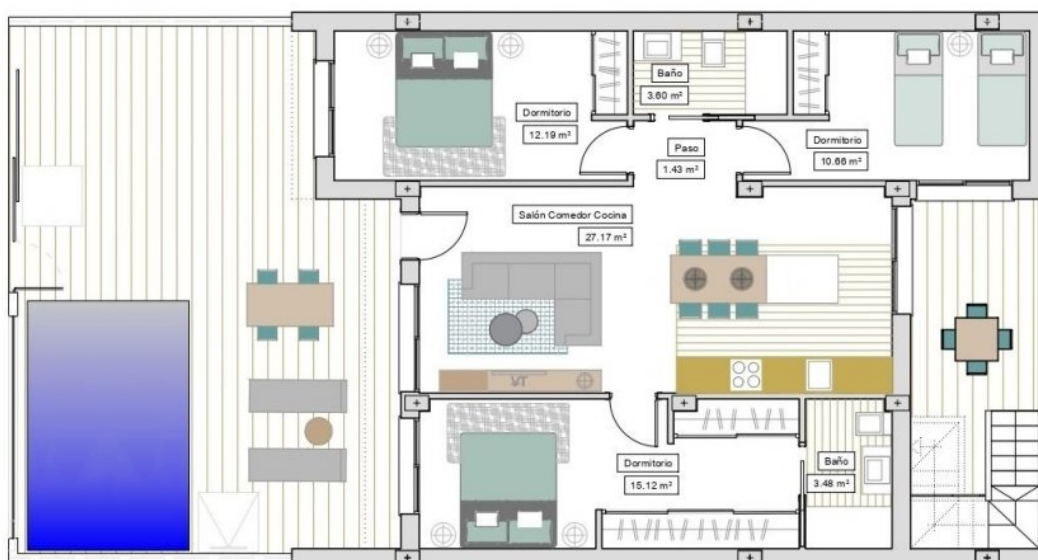












VIVIENDAS A8-A12

Sup. Parcela/ plot:	153.62 m ²
Sup. Constr / Built:	90.80 m ²
Sup. Solarium:	51.40 m ²
Sup. Patio/ Back terrace:	9.64 m ²
Sup. piscina/ pool:	11.25 m ²

"OUR EXPERIENCE IS YOUR GUARANTEE"