



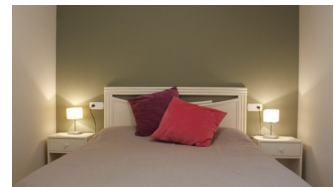
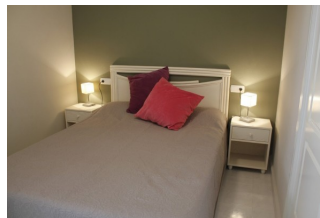
REF: # 10265

CALPE/MORAIRA



INFO

PRICE:	260.000 €
PROPERTY TYPE:	Penthouse
CITY:	Calpe/Moraira
BEDROOMS:	2
Bathrooms:	2
Build (m2):	70
Plot (m2):	-
Terrace (m2):	-
Year:	-
Floor:	-
Old price	-



DESCRIPTION

BEAUTIFUL PENTHOUSES WITH SEA VIEWS IN CALPE Beautiful apartments on the very first line of La Fossa beach in Calpe. Apartments with 1, 2 and 3 bedrooms fully furnished, an equipped bathrooms, an open and equipped kitchen and living-dining room. 2 floors penthouse with 2 bedrooms, 2 bathrooms with terraces which offers magnificent sea views. You can also contemplate beautiful views of Las Salinas. Parking spaces available at an extra cost. In its common areas it has a swimming pool for adults and children and jacuzzi. An incredible opportunity for lovers of the sea. Calpe, one of the towns of La Marina Alta, lies on the northern coast of the province of Alicante, surrounded by the towns of Altea, Benidorm, Teulada-Moraira, Benissa. Calpe has a wonderful mixture of old Valencian culture and modern tourist facilities. It is a great base from which to explore the local area or enjoy the many local beaches. Calpe alone has three of the most beautiful sandy beaches on the coast. Calpe also has two Sailing Clubs: Real Club Náutico de Calpe and Club Náutico de Puerto Blanco. Fishing village of Calpe now transformed into a tourist magnet, the town sits in an ideal location,

easily accessed by the A7 motorway and the N332 that runs from Valencia to Alicante; its approximately 1 hour drive from the airport at Alicante and 1,5 hours to Valencias airport.



VIEWS

- Panoramic views
- Sea views

FURNITURE

- Furnished

**GARDEN AND
TERRACES**

- Open terrace

HEATING

- Central gas heating

EXTRA

- Reinforced door

















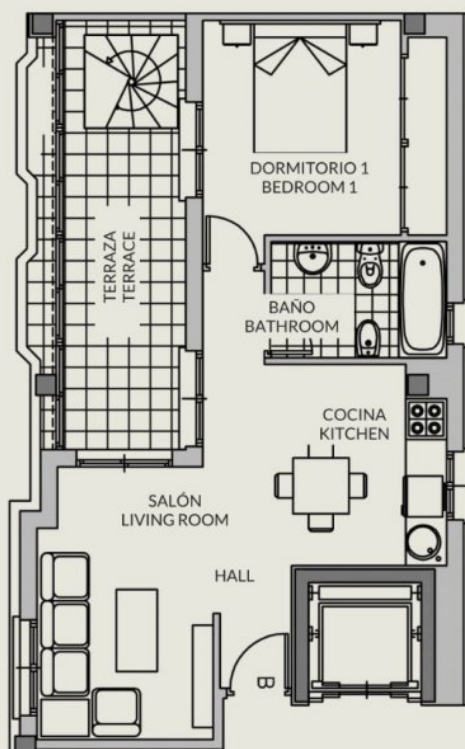
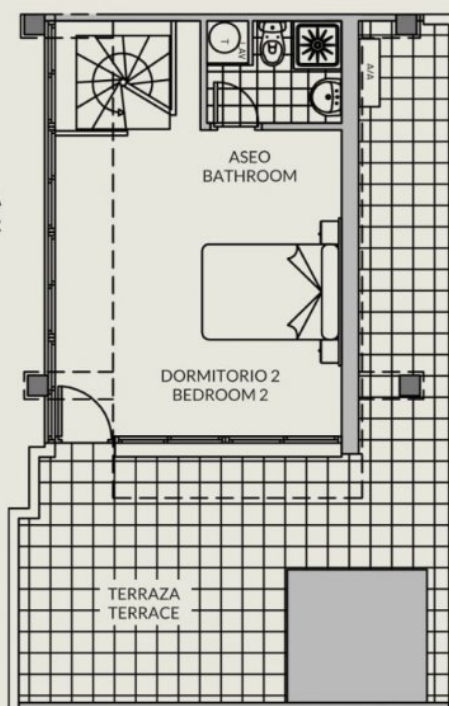


ÁTICO DÚPLEX / DUPLEX PENTHOUSE

2 DORMITORIOS / 2 BEDROOMS

PLANTA 6ª / 6th FLOOR

ESCALERA 4 / STAIR 4

PLANTA BAJA
LOW LEVELPLANTA ALTA
TOP FLOOR**SUPERFICIES / SURFACES****Planta baja / low level**

Superficie construida <i>Built surface</i>	42,25m2
Terraza cubierta <i>Covered terrace</i>	12,50m2
Terraza descubierta <i>Outdoor terrace</i>	2,85m2

Planta alta / Top floor

Superficie construida <i>Built surface</i>	28,20m2
Terrazas descubierta <i>Outdoor terrace</i>	31,20m2

Total ático / Total Penthouse

Superficie construida <i>Built surface</i>	70,45m2
Terraza cubierta <i>Covered Terrace</i>	12,50m2
Terraza descubierta <i>Outdoor Terrace</i>	34,05m2
Elementos comunes <i>Communal areas</i>	8,41m2
Superficie total <i>Total area</i>	125,41m2

**"OUR EXPERIENCE IS YOUR GUARANTEE"**