



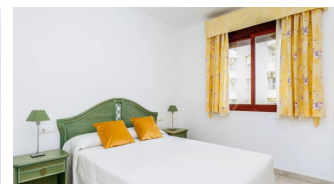
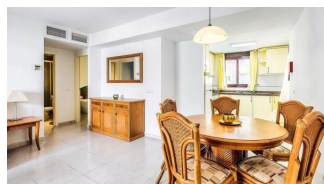
REF: # 10263

CALPE/MORAIRA



#### INFO

PRICE:	279.000 €
PROPERTY TYPE:	Apartment
CITY:	Calpe/Moraira
BEDROOMS:	2
Bathrooms:	2
Build ( m2 ):	58
Plot ( m2 ):	-
Terrace ( m2 ):	-
Year:	-
Floor:	-
Old price	-



#### DESCRIPTION

BEAUTIFUL APARTMENTS WITH SEA VIEWS IN CALPE Beautiful apartment on the very first line of La Fossa beach in Calpe. Apartments with 1, 2 and 3 bedrooms fully furnished, an equipped bathrooms, an open and equipped kitchen and living-dining room. From the dining room there is access to the terrace which offers magnificent sea views. You can also contemplate beautiful views of Las Salinas. Parking spaces available at an extra cost. In its common areas it has a swimming pool for adults and children and jacuzzi. An incredible opportunity for lovers of the sea. Calpe, one of the towns of La Marina Alta, lies on the northern coast of the province of Alicante, surrounded by the towns of Altea, Benidorm, Teulada-Moraira, Benissa. Calpe has a wonderful mixture of old Valencian culture and modern tourist facilities. It is a great base from which to explore the local area or enjoy the many local beaches. Calpe alone has three of the most beautiful sandy beaches on the coast. Calpe also has two Sailing Clubs: Real Club Náutico de Calpe and Club Náutico de Puerto Blanco. Fishing village of Calpe now transformed into a tourist magnet, the town sits in an ideal location, easily accessed by the A7 motorway and the N332 that runs from Valencia to Alicante; its

approximately 1 hour drive from the airport at Alicante and 1,5 hours to  
Valencias airport.



**VIEWS**

- Panoramic views
- Sea views

**FURNITURE**

- Furnished

**GARDEN AND  
TERRACES**

- Open terrace

**HEATING**

- Central gas heating

**EXTRA**

- Reinforced door

## PROPERTY GALLERY







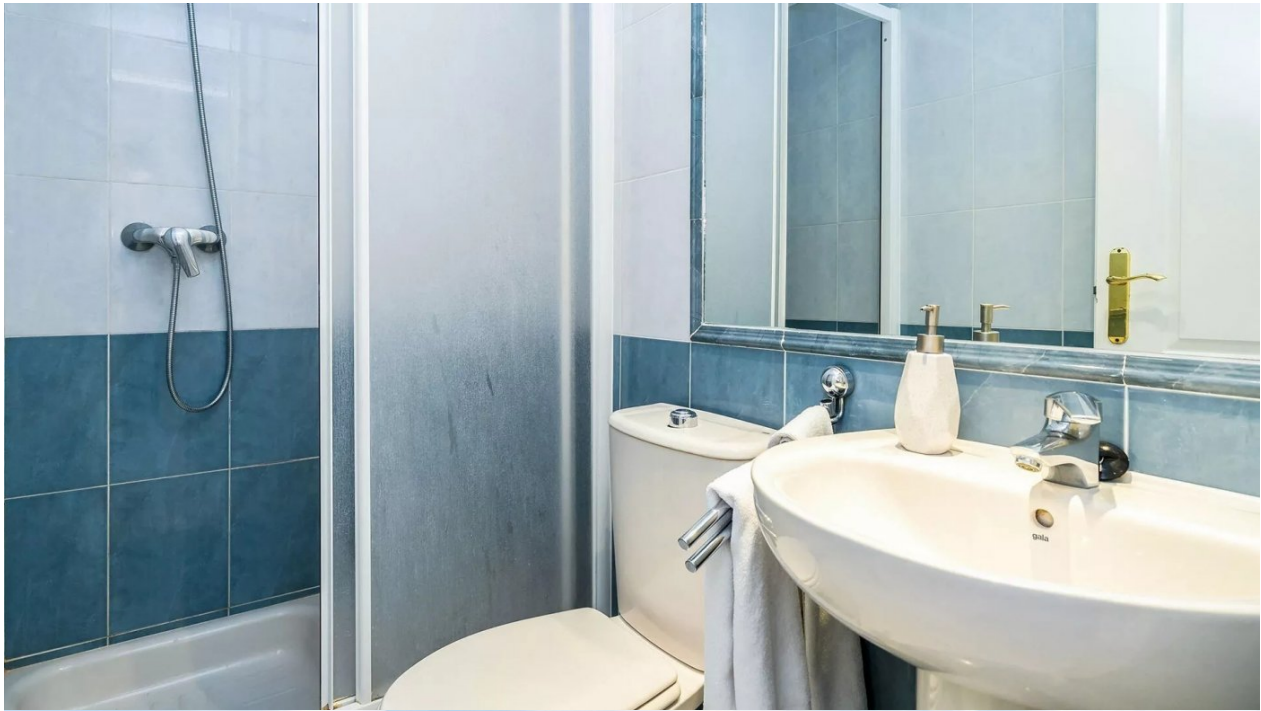






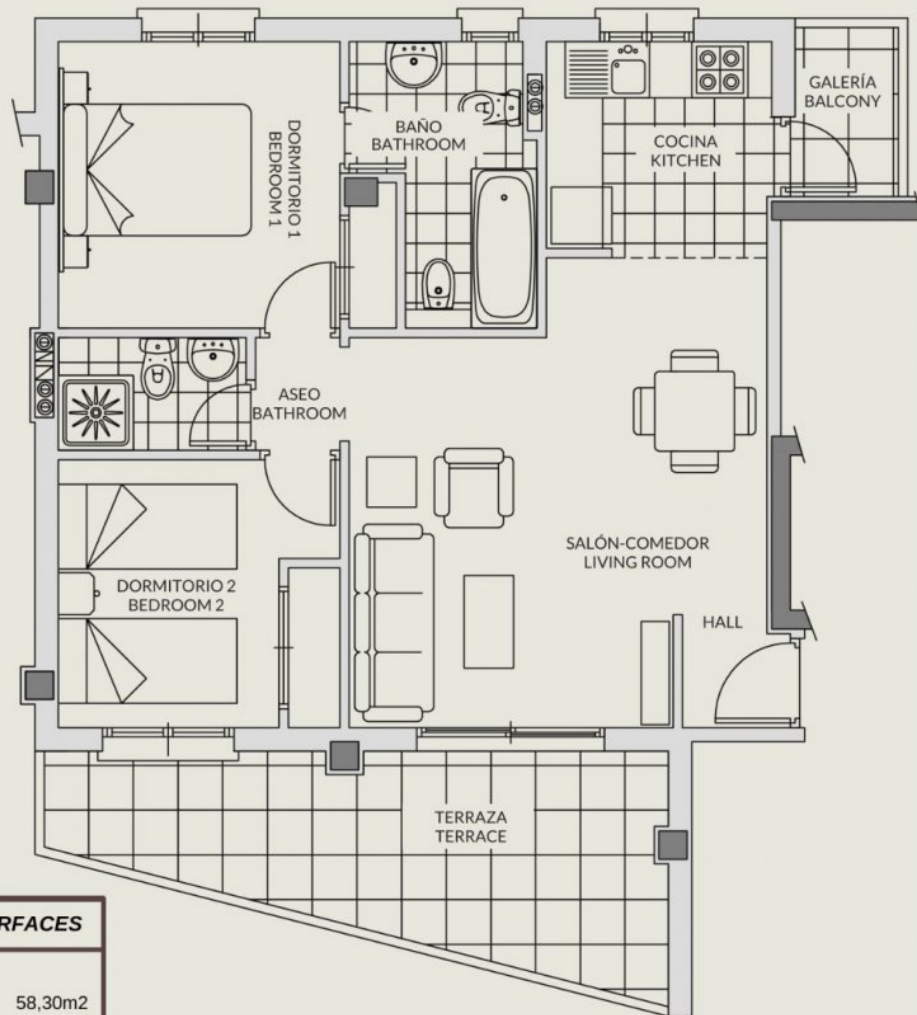








**APARTAMENTO / APARTMENT**  
2 DORMITORIOS / 2 BEDROOMS  
PLANTA 2ª / 2nd FLOOR  
ESCALERA 1 / STAIR 1

**SUPERFICIES / SURFACES**

Superficie construida <i>Built surface</i>	58,30m <sup>2</sup>
Terraza cubierta <i>Covered terrace</i>	14,70m <sup>2</sup>
Zonas comunes <i>Communal areas</i>	12,23m <sup>2</sup>
<b>SUPERFICIE TOTAL TOTAL AREA</b>	<b>85,23m<sup>2</sup></b>







***"OUR EXPERIENCE IS YOUR GUARANTEE"***