



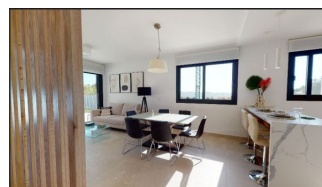
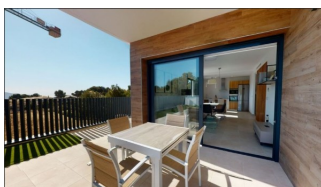
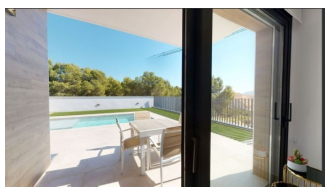
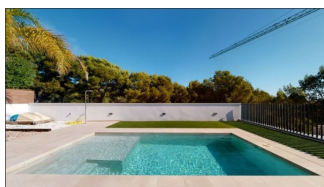
REF: # 10244

LA NUCIA/POLOP



INFO

PRICE:	448.092 €
PROPERTY TYPE:	Villa
CITY:	La Nucia/Polop
BEDROOMS:	3
Bathrooms:	4
Build (m2):	141
Plot (m2):	213
Terrace (m2):	-
Year:	-
Floor:	-
Old price	-



DESCRIPTION

NEW BUILD VILLAS IN LA NUCIA New Build Residential of comfortable and luxurious villas with private pools in La Nucia. Villas consist of 3 large double rooms with fitted and lined wardrobes. One room is on the ground floor and the other two on the first floor. It consists of 4 completely finished bathrooms with glass screens, porcelain toilets and thermostatic taps in showers, one on the first floor, another in the garage and the other 2 en suite in the rooms on the first floor. Bright living room with large windows that give access to the private plot with pool and artificial grass where you can enjoy and relax. Fully equipped American kitchen with wall and base units, high-end appliances and an island with base units, SILESTONE countertop with built-in stainless steel sink and designer stainless steel extractor hood. Installation of Air Conditioning and Heating through AEROTHERMAL ducts with 2 independent machines (dual zone). Comfort and design PORCELANOSA provide exclusive finishes, such as floating floors, natural stone floors and top quality stoneware. The entire Villa has interior and exterior LED lighting and electric shutters. Residential located in an exclusive area of great quality and with all the comforts; terrace, solarium, private garage for 2 vehicles, garden areas, urbanization, pool and everything you can

imagine. Residential committed to the enviroment , equipped with solar panels for the production of domestic hot water, LED lighting and THERMAL-ACOUSTIC insulation. La Nucia is a municipality in the comarca of Marina Baixa, Alicante. It borders the municipalities of Altea, Callosa d'En Sarrià, Benidorm, Polop and L'Alfàs del Pi. La Nucia is located in a fruit valley between Benidorm and Callosa d'En Sarrià, 3 km from the coast of Altea. The urban center is on a promontory overlooking the Mediterranean Sea, 51 km north of Alicante and 8 km north of Benidorm. DISTANCES: - Access from highway A. - 5 minutes from Terra Mitica. - 5 minutes from the ELIANS School. - 5 minutes from supermarkets, cafes and all kinds of services. - 10 minutes from Benidorm Beach. - 15 minutes from Playa del Albir. - 20 minutes from Guadalest Castle. - 40Km from Alicante-Elche Airport.



VIEWS

- Panoramic views

**GARDEN AND
TERRACES**

- Open terrace
- Private garden

EXTRA

- Reinforced door
- Storage room















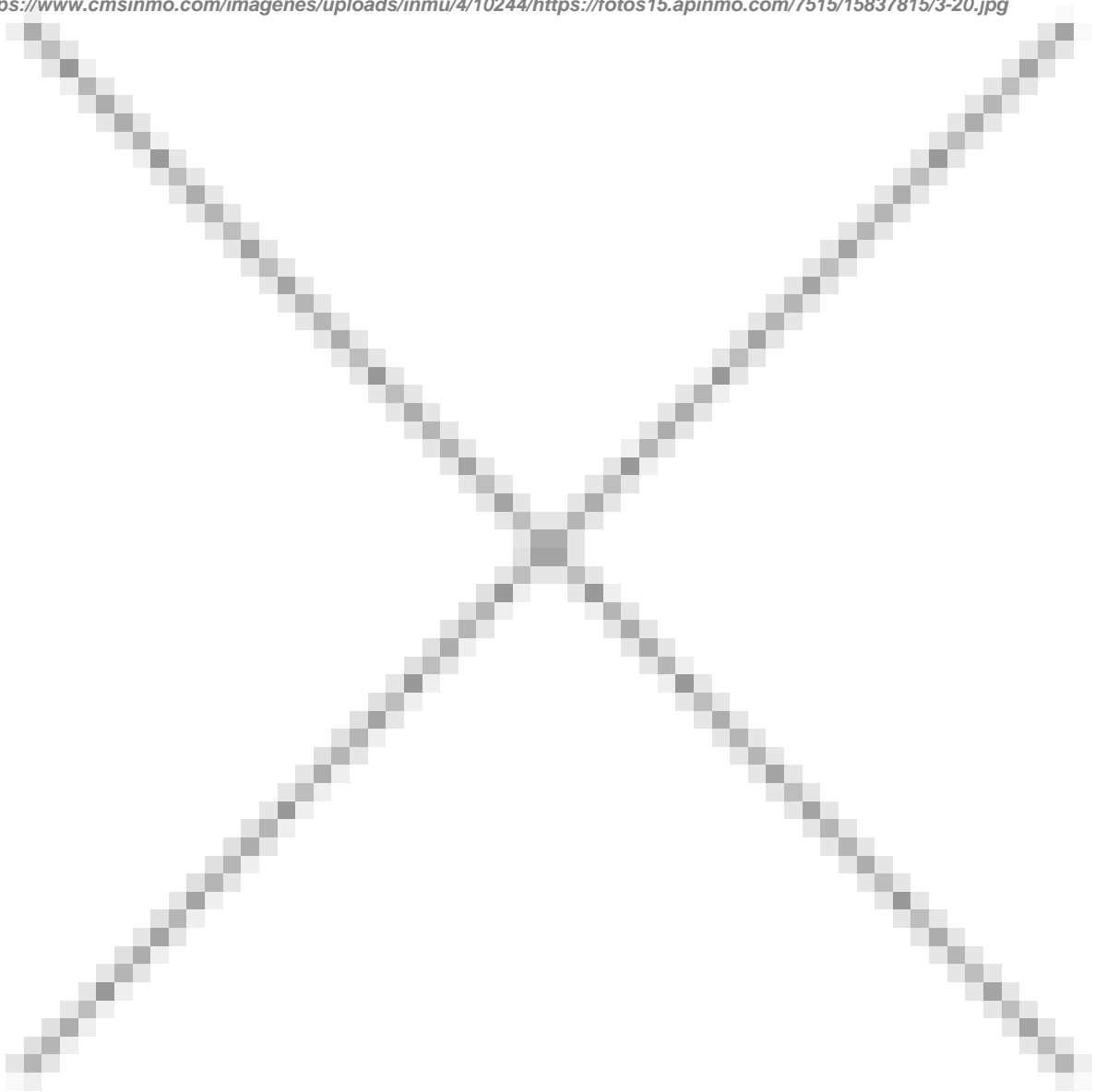






Image not found

<https://www.cmsinmo.com/imagenes/uploads/inmu/4/10244/https://fotos15.apinmo.com/7515/15837815/3-20.jpg>



"OUR EXPERIENCE IS YOUR GUARANTEE"