



REF: # 10232

CALPE/MORAIRA



#### INFO

**PRICE:** 2.690.000 €

**PROPERTY TYPE:** Villa

**CITY:** Calpe/Moraira

**BEDROOMS:** 5

**Bathrooms:** 6

**Build ( m2 ):** 692

**Plot ( m2 ):** 1.532

**Terrace ( m2 ):** -

**Year:** -

**Floor:** -

**Old price** -



#### DESCRIPTION

**NEW BUILD VILLA IN MORAIRA** Luxury New Build villa for sale in Benimeit area in Moraira. This high quality villa has 4 floors which are connected by an elevator and an internal staircase. The main floor has a spacious open-plan living-dining room-kitchen. The kitchen is fully equipped and has an island for cooking. Sliding doors at ceiling height give direct access to various terraces. Furthermore there are 3 double bedrooms, all with their own bathroom and a guest toilet. One level higher are 2 more double bedrooms. Each with an en-suite bathroom. The property has 2 basements. Basement number one houses the gym, an additional bathroom and the laundry room. In basement number 2 there is a garage for 2 cars and storage rooms. Air conditioning throughout the house (conduct) and central heating. Automatic entrance door with independent pedestrian entrance and intercom. On the same level as the main house is the pool. Moraira is a small town with with good restaurants, bars and plenty of supermarkets around. There is a very pleasant beach right next to town that is great for families. The seafront offers tremendous views of Penon Ifach across the bay in

Calpe. The coast road getting there is well worth doing with some spectacular views. Moraira situated about 1 hour 15 minutes North up the A7 from Alicante airport its fairly easy to get to. It's about the same distance or a little less South from Valencia airport.



#### VIEWS

- Panoramic views

#### AIRCONDITIONING

- Central airconditioning

#### PARKING

Garage no Cars : 1

#### MAIN LIVING AREA

- Gym

#### GARDEN AND TERRACES

- Open terrace
- Private garden

#### HEATING

- Central gas heating
- Radiators

#### EXTRA

- Reinforced door
- Storage room









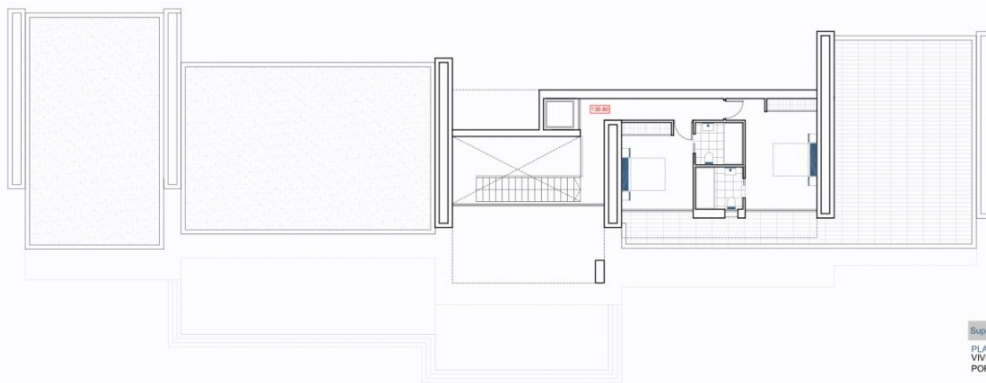












Superficies	Construidas
PLANTA BAJA	
VIVIENDA	283.62m2
PORCHES	102.33m2
TERRAZA	60.78m2
PISCINA	64.96m2
PLANTA ALTA	
VIVIENDA	90.36m2
PORCHE	10.80m2
TERRAZA	69.96m2
PLANTA SOTANO -1	
VIVIENDA	42.15m2
GINNASIO	37.34m2
PLANTA SOTANO -2	
VIVIENDA	48.80m2
GARAJE	46.45m2
CUARTO TEC.	21.76m2
PORCHE ACCESO	8.35m2
ACABADOS EXT.	
RAMPA	182.85m2

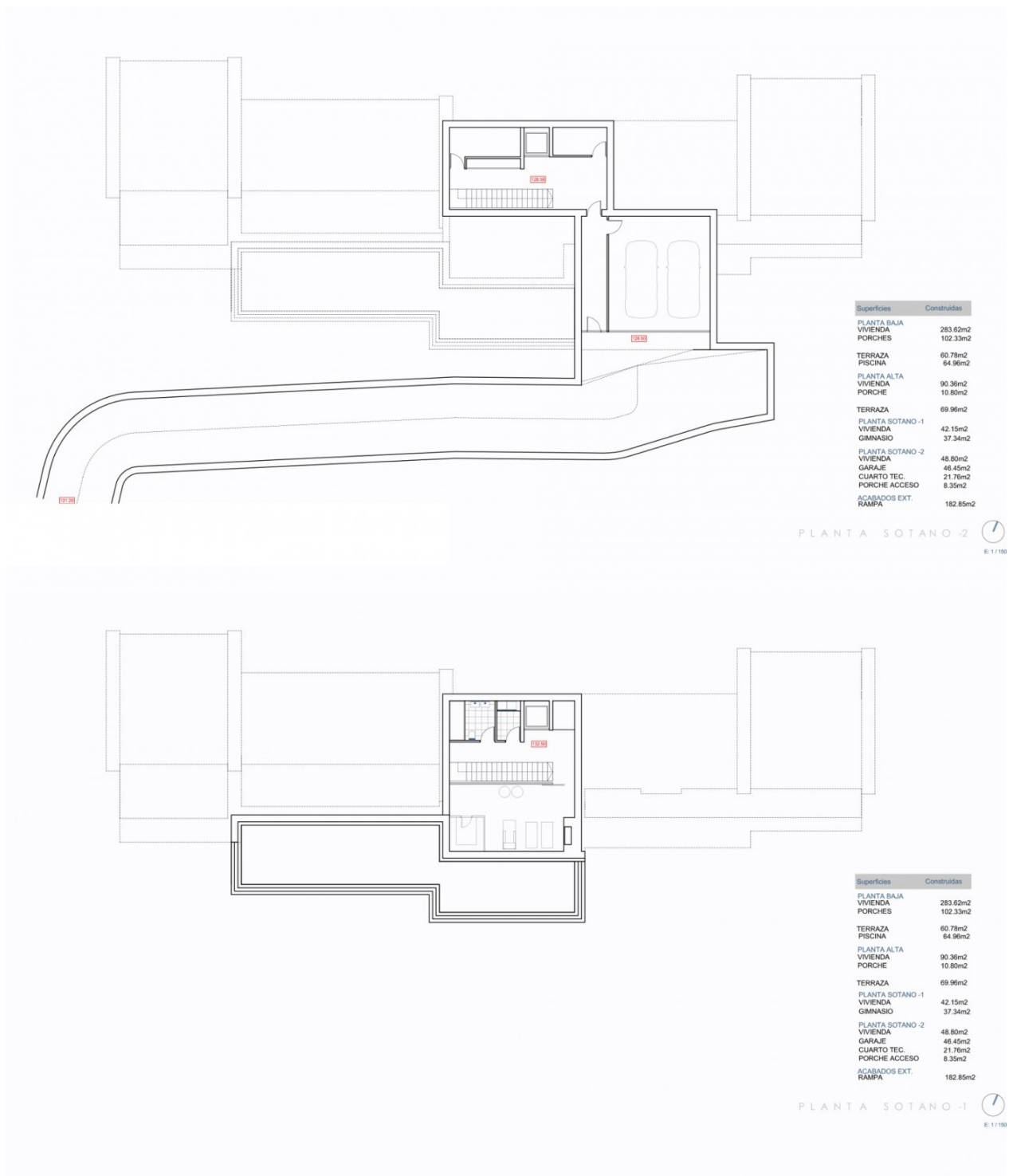
PLANTA ALTA (



Superficies	Construidas
PLANTA BAJA	
VIVIENDA	283.62m2
PORCHES	102.33m2
TERRAZA	60.78m2
PISCINA	64.96m2
PLANTA ALTA	
VIVIENDA	90.36m2
PORCHE	10.80m2
TERRAZA	69.96m2
PLANTA SOTANO -1	
VIVIENDA	42.15m2
GINNASIO	37.34m2
PLANTA SOTANO -2	
VIVIENDA	48.80m2
GARAJE	46.45m2
CUARTO TEC.	21.76m2
PORCHE ACCESO	8.35m2
ACABADOS EXT.	
RAMPA	182.85m2

PLANTA BAJA (





**"OUR EXPERIENCE IS YOUR GUARANTEE"**