



REF: # 10169

OLIVA



#### INFO

PRICE:	2.250.000 €
PROPERTY TYPE:	Villa
CITY:	Oliva
BEDROOMS:	4
Bathrooms:	4
Build ( m2 ):	450
Plot ( m2 ):	424
Terrace ( m2 ):	-
Year:	-
Floor:	-
Old price	-



#### DESCRIPTION

Construction of 10 semi-detached houses on the beachfront in Muchavista. Its exclusive location on the first line of the San Juan-Muchavista beach makes it one of the few plots where you can boast of the privilege of living face to face with the Mediterranean Sea. Its contemporary design facing the bay, the high quality of the selected materials and the uniqueness of the elements that it includes make it unique. Its enclave in a fully consolidated area provides it with all the necessary services. Quick access to public transport, schools, hospitals, leisure, shopping, golf, airport, etc ... It is, therefore, an exclusive project of high standing in which all the homes are located on the strict seafront. It is located in one of the vertices of the promenade and with a south orientation that allows you to enjoy a complete view of the bay. It has immediate access to all the services of one of the best beaches with a Blue Flag fully integrated in the metropolitan area: Sports: Windsurfing, paddle surfing, sailing, canoeing, beach volleyball, golf courses ... Leisure: Restaurants, beach bars, shops, shopping centers, yacht clubs ... Hospital: Several outpatient clinics and hospitals within 5 min. Transport: Tram line (TRAM), bus and access to the main communication routes. Airport: Its strategic location allows you to reach

the Alicante-Elche international airport in less than 20 min. Educational: Wide and diverse educational offer in its surroundings. All this allows us to live in a paradisiacal environment where you can enjoy all the services of a big city like Alicante and the nuances and tranquility of a traditional tourist town like El Campello.



**VIEWS**

- Panoramic views
- Sea views

**PARKING**

Garage no Cars : 1

**MAIN LIVING AREA**

- Gym

**GARDEN AND  
TERRACES**

- Open terrace
- BBQ/grill
- Private garden

**EXTRA**

- Outdoor jacuzzi

## PROPERTY GALLERY

























**Avance de Obra Enero 2021**

Con la participación de:  **Santander**

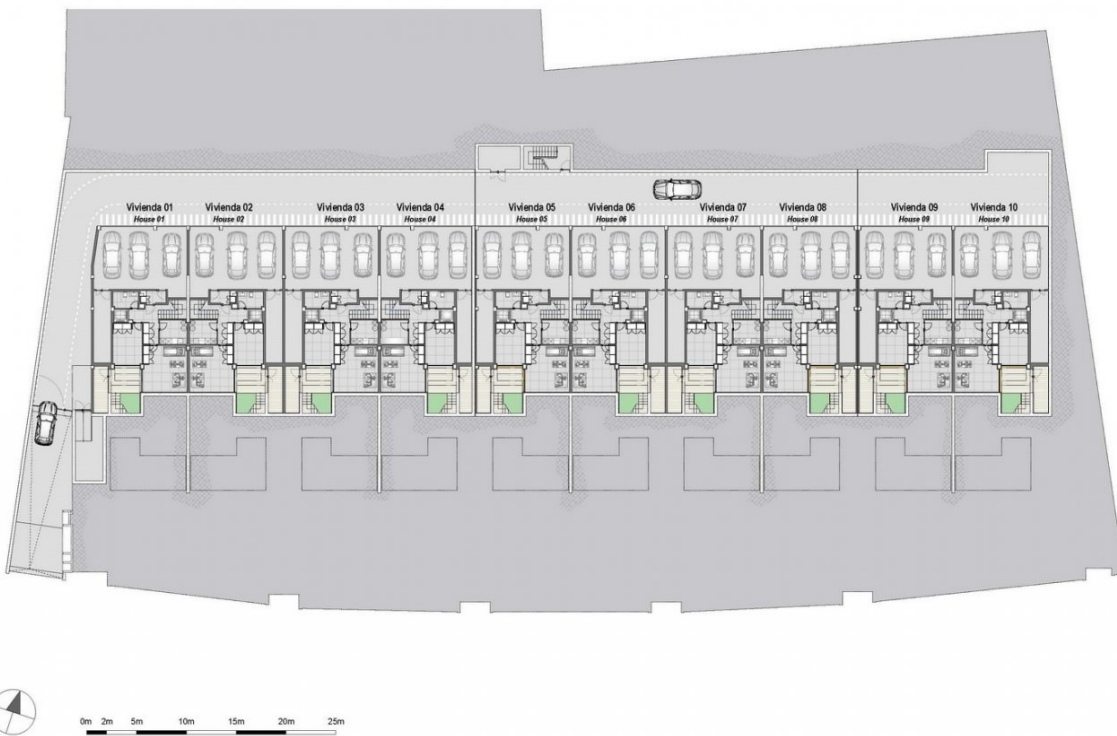




FEBRERO 2019. El proyecto puede sufrir modificaciones por razones administrativas, legales y/o de la dirección facultativa.  
FEBRUARY 2019. The development may be subject to changes due to administrative or legal reasons, and/or by decision of the management.



**VIVIENDA 02**  
Planta General - Parcelario  
HOUSE 02  
Ground floor - P&A



FEBRERO 2019. El proyecto puede sufrir modificaciones por razones administrativas, legales y/o de la dirección facultativa.  
FEBRUARY 2019. The development may be subject to changes due to administrative or legal reasons, and/or by decision of the management.



**VIVIENDA 02**  
Planta General - Aparcamiento  
HOUSE 02  
Lower Ground floor - Garage



FEBRERO 2013. El proyecto puede sufrir modificaciones por exigencias administrativas, legales y/o de la dirección facultativa.  
FEBRUARY 2013. The development may be subject to changes due to administrative or legal reasons, and/or by decision of the management.



0m 1m 2m 3m 4m 5m



**VIVIENDA 02**  
Planta Sótano - Planta Baja - Planta Primera  
**HOUSE 02**  
Lower Ground floor - Ground floor - 1st floor



0m 1m 2m 3m 4m 5m



SUPERFICIES CONSTRUIDAS (TOTAL BUILT AREA)		524.30 m²
Sótano (Lower)		147.89 m²
Planta Sótano (Lower ground floor)		147.89 m²
Garage (private) (Private garage)		63.59 m²
P.P. Zona común (garaje) (Garage common area)		7.05 m²
Trastero (Storage room)		14.09 m²
Subsidiaria (Subsidiary)		7.10 m²
Vivienda (Living)		297.43 m²
Planta Sótano (Lower ground floor)		71.80 m²
Planta Baja (Ground floor)		93.85 m²
Planta 1ª (1st floor)		45.85 m²
Planta 2ª (2nd floor)		45.88 m²
Elementos descubiertos (Covered elements)		102.83 m²
Patios, terrazas y escaleras ext. (Patios, terraces and outdoor staircases)		92.83 m²
Patios (Patios)		14.72 m²
Patios (Patios)		6.81 m²
Trastero (Storage room)		22.23 m²
Escaleras (Staircases)		5.40 m²
Solarium (Solarium)		52.07 m²

SUPERFICIES ÚTILES (FLOOR AREA)		445.05 m²
Sótano (Lower)		147.81 m²
Planta Sótano (Lower ground floor)		147.81 m²
Garage (private) (Private garage)		63.59 m²
P.P. Zona común (garaje) (Garage common area)		7.05 m²
Trastero (Storage room)		14.09 m²
Subsidiaria (Subsidiary)		7.10 m²
Vivienda (Living)		297.43 m²
Planta Sótano (Lower ground floor)		65.40 m²
Planta Baja (Ground floor)		93.85 m²
Planta 1ª (1st floor)		45.85 m²
Planta 2ª (2nd floor)		45.88 m²
Elementos descubiertos (Covered elements)		102.83 m²
Patios, terrazas y escaleras ext. (Patios, terraces and outdoor staircases)		92.83 m²
Patios (Patios)		14.72 m²
Patios (Patios)		6.81 m²
Trastero (Storage room)		22.23 m²
Escaleras (Staircases)		5.40 m²
Solarium (Solarium)		52.07 m²

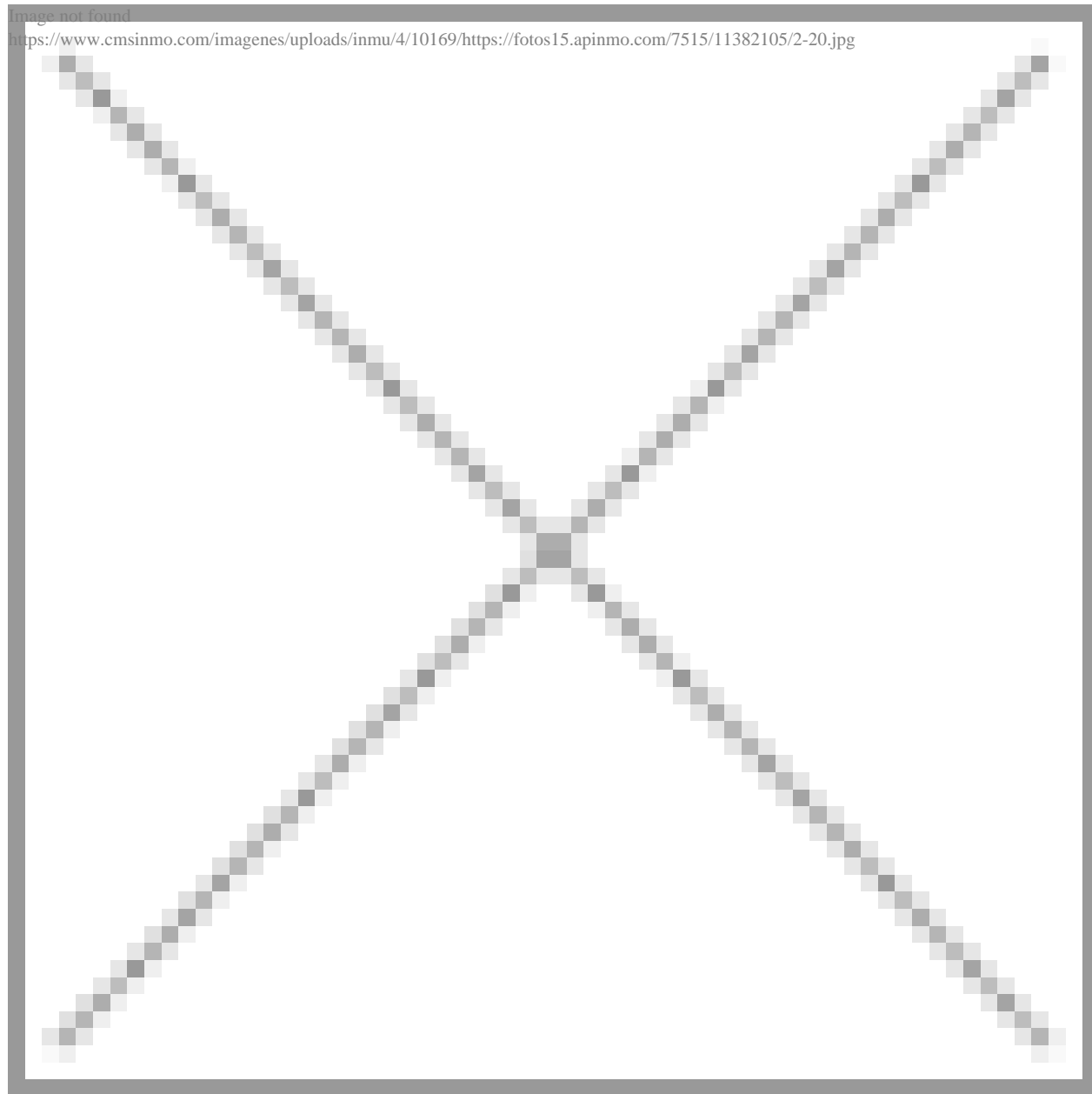
FEBRERO 2013. El proyecto puede sufrir modificaciones por exigencias administrativas, legales y/o de la dirección facultativa.  
FEBRUARY 2013. The development may be subject to changes due to administrative or legal reasons, and/or by decision of the management.

**VIVIENDA 02**  
Planta Segunda - Planta Solarium  
**HOUSE 02**  
2nd floor - Solarium floor



Image not found

<https://www.cmsinmo.com/imagenes/uploads/inmu/4/10169/https://fotos15.apinmo.com/7515/11382105/2-20.jpg>



***"OUR EXPERIENCE IS YOUR GUARANTEE"***