



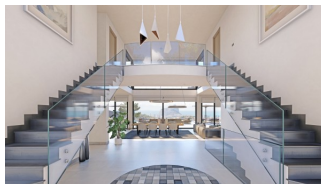
REF: # 9851

CALPE/MORAIRA



#### INFO

PRICE:	3.500.000 €
PROPERTY TYPE:	Villa
CITY:	Calpe/Moraira
BEDROOMS:	6
Bathrooms:	6
Build ( m2 ):	855
Plot ( m2 ):	2.200
Terrace ( m2 ):	-
Year:	-
Floor:	-
Old price	-



#### DESCRIPTION

Luxurious villa for sale in Calpe with amazing panoramic sea views and views of the Peñon d'Ífach. Situated on a large plot in Empedrola. The villa is designed on 3 floors which are connected with an elevator as well as a staircase. Keywords for this majestic project are: extravagant, comfort, space, views and luxury. On the main floor we find a more than impressive hallway, the large living-dining room with adjacent open plan kitchen with island, a second living room, 2 spacious bedrooms en-suite, guest toilet, storage area and a laundry room. One floor up 2 large bedrooms en-suite with dressing, a living room and a private terrace as well as access to the shared terrace. The lowest floor hosts two guest areas, each with a bedroom, bathroom, kitchen and lounge. Furthermore, there is a gym, sauna area, indoor pool (6x3 m) and a relaxation area. Underfloor heating, air conditioning (ducts), domotic system, lift, solar panels, alarm (in- and outside), pre-installation of cameras etc. etc. The outside area is just as impressive as the villa itself. An elevated infinity pool (12 x 4,5 m) is the absolute eye catcher. Large open and covered terraces, barbecue area and a low maintenance garden. Garage for 3 cars.

#### ENERGETIC CERTIFIED





VIEWS	PARKING	HEATING	ENERGETIC CERTIFIED
<ul style="list-style-type: none"> <li>Panoramic views</li> <li>Sea views</li> </ul>	Garage no Cars : 1 <hr/>	<ul style="list-style-type: none"> <li>Central gas heating</li> </ul>	 <p>The image shows a vertical energy efficiency scale with seven horizontal bars labeled A through G. The bars are colored in a gradient from dark green at the top to red at the bottom. A green vertical bar on the right side of the scale is labeled 'IN PROGRESS' vertically.</p>

***"OUR EXPERIENCE IS YOUR GUARANTEE"***