



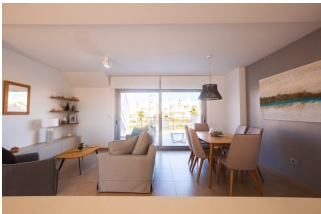
REF: # 9771

SAN MIGUEL (VISTABELLA GOLF)



INFO

| | |
|-----------------|------------------------------|
| PRICE: | 179.900 € |
| PROPERTY TYPE: | Apartment |
| CITY: | San Miguel (Vistabella Golf) |
| BEDROOMS: | 2 |
| Bathrooms: | 2 |
| Build (m2): | 65 |
| Plot (m2): | 33 |
| Terrace (m2): | 10 |
| Year: | - |
| Floor: | - |
| Old price | - |




DESCRIPTION

NEW BUILD RESIDENTIAL OF APARTMENTS GROUND FLOOR IN VISTABELLA near the golf course. This 65m2 ground floor apartment consists of 2 bedrooms and 2 bathrooms with a 10m2 terrace and a 33m2 private garden, open plan kitchen with the lounge area, fitted wardrobes and terrace with lovely views. This complex has communal facilities and swimming pool. Each apartment comes with private parking and a storeroom is available at an extra cost. At Vistabella Golf there is space for everyone. The course is designed so that each player can enjoy it from start to finish. Its undulating streets, strategic bunkers or lakes are some of the features that make it one of the most attractive designs in the area, where every stroke is a challenge and a pleasure for the senses. The 18 Holes of Vistabella Golf, par 72 and more than 6,000 meters in length have been designed following the guidelines of the modern fields with 4 tees of great amplitude in each hole, wide fairways and raised bunkers. The Vistabella Golf club house, restaurant, local bars and shops are within 5 minutes walk. The busy towns of San Miguel

de Salinas and Los Montesinos are 5 minutes drive away and the lovely Blue flag beaches at Guardamar are just 15 minutes drive away. Only 15 minutes drive is “La Zenia Boulevard” the largest shopping centre in the Alicante region, it’s a one-stop destination for clothes, shoes and general supplies. No matter what you're after, chances are you won't walk out empty-handed. Alicante airport is 35 minutes away and Corvera Murcia airport is 45 minutes away.



| STYLE | DISTANCE TO : | FURNITURE | PARKING |
|--|--|---|---|
| <ul style="list-style-type: none"> Modern | Beach : +10 Km Airport: 40 Km Town center : 5 Km | <ul style="list-style-type: none"> Not furnished | Parking no Cars: 1 |
| KITCHEN | GARDEN AND TERRACES | EXTRA | ENERGETIC CERTIFIED |
| <ul style="list-style-type: none"> Open kitchen | <ul style="list-style-type: none"> Open terrace Private garden | <ul style="list-style-type: none"> Built in wardrobes Reinforced door |  <p>The image shows a vertical energy efficiency scale with seven levels, A through G, represented by horizontal bars of decreasing length and increasing color intensity from green (A) to red (G). A green vertical bar on the right side of the scale is labeled 'IN PROGRESS' and extends to the level of A.</p> |

"OUR EXPERIENCE IS YOUR GUARANTEE"