



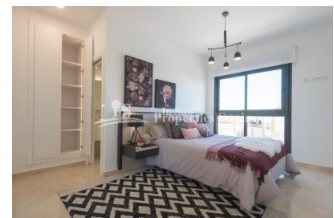
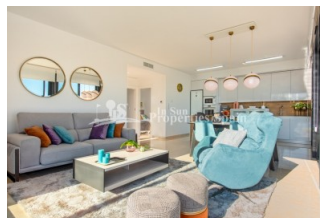
REF: # 7210

QUESADA-ROJALES (LA FINCA GOLF)



INFO

PRICE:	340.000 €
PROPERTY TYPE:	Villa
CITY:	Quesada-Rojales (La Finca Golf)
BEDROOMS:	3
Bathrooms:	3
Build (m2):	118
Plot (m2):	365
Terrace (m2):	62
Year:	
Floor:	-
Old price	-

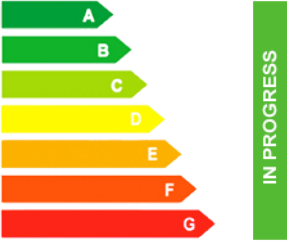


DESCRIPTION

Located in Algorfa (Alicante) next to the golf course "LA FINCA" is this luxury new development of 14 individual villas with private pools, parking, garage (depending on model), garden, terraces and with one bedroom and a bathroom on the ground floor. They are located in a privileged, quiet environment close to all services and close to the pine forests and beaches of Guardamar. This is a Villa of 118m2 with 3 bedrooms, 2 bathrooms, an area of 365m2, 12m2 of terrace, 50m2 solarium, 67'30m2 garage and parking. The Kitchens are furnished and complete with Silestone worktop and both bathrooms have under floor heating. La Finca golf course opened its doors in August 2002. This magnificent golf course was designed by the renowned Spanish designer Pepe Gancedo, who was one of the standout amateur players in Spain. Algorfa lies on the banks on the River Segura with a beautiful mountainous backdrop and wonderful panoramic views to the coast. It is one of Vega Baja's citrus farming villages. The village is a short drive from the wonderful

beaches of the Costa Blanca, and is less than 1 hour from Alicante Airport. The area is relaxed, friendly with a typically laid-back Spanish way of life. In Algorfa you are close to fabulous blue flag beaches and nature reserves. Yet just a 20 minute drive away you have the facilities and expat residents of Torrevieja. Algorfa holds a market on Sundays. Local shops provide daily needs and further shopping is available in nearby Torrevieja and Orihuela.



STYLE	VIEWS	DISTANCE TO :	ORIENTATION
<ul style="list-style-type: none"> Modern Contemporary 	<ul style="list-style-type: none"> Panoramic views Mountain views 	Beach : +10 Km Airport: 50 Km Town center : 3 Km	South East West
FURNITURE	PARKING	FLOORING	KITCHEN
<ul style="list-style-type: none"> Not furnished 	Parking no Cars: 1	<ul style="list-style-type: none"> Tile floors Stone floors 	<ul style="list-style-type: none"> Open kitchen Equipped kitchen
GARDEN AND TERRACES	HEATING	EXTRA	ENERGETIC CERTIFIED
<ul style="list-style-type: none"> Open terrace Landscaped Private garden 	<ul style="list-style-type: none"> Floor heating bathrooms 	<ul style="list-style-type: none"> Built in wardrobes Reinforced door Double glazed windows 	 <p>The image shows a vertical energy efficiency scale with seven horizontal bars labeled A through G. The bars are colored in a gradient from dark green at the top to red at the bottom. Bar A is the top-most and shortest, while bar G is the bottom-most and longest. To the right of these bars is a vertical green bar with the text 'IN PROGRESS' written vertically inside it.</p>

"OUR EXPERIENCE IS YOUR GUARANTEE"