



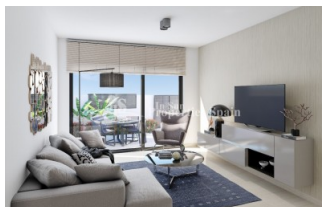
REF: # 7158

COSTA MURCIA (SANTIAGO DE LA RIBERA)



INFO

PRICE:	196.000 €
PROPERTY TYPE:	Apartment
CITY:	Costa Murcia (Santiago de la Ribera)
BEDROOMS:	3
Bathrooms:	2
Build (m2):	91
Plot (m2):	-
Terrace (m2):	82
Year:	
Floor:	-
Old price	-

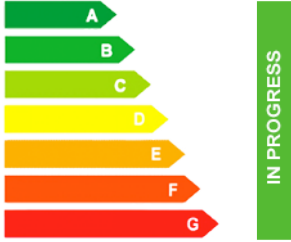


DESCRIPTION

A new project 15 minutes walk from the Sea and 5/10 minutes walk from the Pine woods in San Blas, SANTIAGO DE LA RIBERA. These 24 Maisonettes all boast 3 bedrooms, 2 bathrooms and parking space. The ground floor properties have spacious 83m2 garden and the top floor have 82m2 sunny solarium. They all have access to the community gardens and lovely communal swimming pool. Ground floor properties of 96m2 boast an open plan layout with 3 good size bedrooms, modern kitchen and 2 bathrooms. Top floor are of 90m2 and offer a similar layout but benefit from a sunny private solarium. Santiago de la Ribera is a lovely town that sits on the shores of the Mar Menor. It is the coastal area of the town of San Javier still maintains its 'fishing village' atmosphere. It has a very beautiful promenade, which is lined with palm trees and a

wonderful sandy beach. It also has a large weekly market and boats operate all year round across to the popular La Manga Strip. Delivery Nov 2021 Prices Ground Floor from 192.000 and Top Floor from 196.000 Euros !!



STYLE	VIEWS	DISTANCE TO :	ORIENTATION
<ul style="list-style-type: none"> Modern Contemporary 	<ul style="list-style-type: none"> Panoramic views 	Beach : 500 m Airport: 30 Km Town center : 500 m	South East West
FURNITURE	PARKING	FLOORING	KITCHEN
<ul style="list-style-type: none"> Not furnished 	Parking no Cars: 1	<ul style="list-style-type: none"> Tile floors Stone floors 	<ul style="list-style-type: none"> Open kitchen Equipped kitchen
GARDEN AND TERRACES	EXTRA	ENERGETIC CERTIFIED	
<ul style="list-style-type: none"> Open terrace Landscaped Communal Garden 	<ul style="list-style-type: none"> Built in wardrobes Reinforced door Double glazed windows 	 <p>The image shows a vertical energy efficiency scale with seven levels, A through G, represented by horizontal bars of increasing length and changing colors from green at the top to red at the bottom. Level A is the highest (shortest bar), and level G is the lowest (longest bar). To the right of this scale is a vertical green bar with the text 'IN PROGRESS' written vertically, indicating the current energy rating of the property.</p>	

"OUR EXPERIENCE IS YOUR GUARANTEE"