



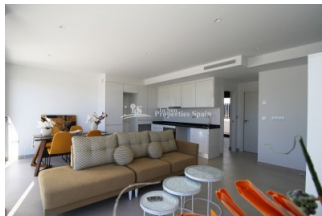
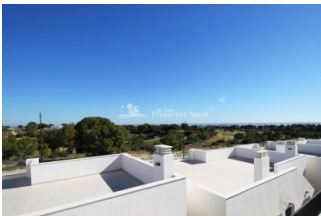
REF: # 7003

ORIHUELA COSTA (PILAR DE LA HORADADA)



#### INFO

PRICE:	230.900 €
PROPERTY TYPE:	Villa
CITY:	Orihuela Costa (Pilar de la Horadada)
BEDROOMS:	3
Bathrooms:	2
Build ( m2 ):	91
Plot ( m2 ):	-
Terrace ( m2 ):	84
Year:	
Floor:	-
Old price	-




#### DESCRIPTION

An exclusive development in LO ROMERO GOLF RESORT, PILAR DE LA HORADADA, JUST 6KM FROM THE BEACH. KEY READY One level detached villas with solarium designed to offer the maximum space, light and comfort in addition, the houses will have a parking space, communal swimming pool and garden area. This is a KEY READY, 3 bedroom 91m2 Villa with an open play layout, modern fitted kitchen in Brilliant white with Vitroceramic hob, oven and extractor hood, living dining space and 2 bathrooms. 94m2 private garden to enjoy entertaining family and friends and a sunny 84m2 solarium with sea views. TV & Telephone points in the living room and bedrooms. Pre-installation of AC by ducts. The location of Lo Romero is the envy of most. The course lay out of 18 holes lies in a natural landscape basin which is situated in the municipality of Pilar de la Horadada, a town in the province of Alicante. The area has around 300 days of sunshine per annum with an average annual mean temperature of 18°C. A destination location which has

everything to offer; beaches, blue seas, mountain ranges, sunshine, and of course Golf. Furthermore, there are other activities in this beautiful natural environment such as hiking, bike rides, equitation centres, etc. Lo Romero is perfectly linked by road to the cities of Alicante and Murcia. 40 minutes from Corvera Airport (RMU) and 50 minute from Alicante Airport (ALC)



<b>STYLE</b> <ul style="list-style-type: none"> <li>Modern</li> <li>Contemporary</li> </ul>	<b>VIEWS</b> <ul style="list-style-type: none"> <li>Panoramic views</li> <li>Sea views</li> <li>Mountain views</li> </ul>	<b>DISTANCE TO :</b> <div>Beach : 6 Km</div> <div>Airport: 40 Km</div> <div>Town center : 4 Km</div>	<b>ORIENTATION</b> <div>South East West</div>
<b>FURNITURE</b> <ul style="list-style-type: none"> <li>Not furnished</li> </ul>	<b>PARKING</b> <div>Parking no Cars: 1</div>	<b>FLOORING</b> <ul style="list-style-type: none"> <li>Tile floors</li> <li>Stone floors</li> </ul>	<b>KITCHEN</b> <ul style="list-style-type: none"> <li>Open kitchen</li> <li>Equipped kitchen</li> <li>Granite countertop</li> </ul>
<b>GARDEN AND TERRACES</b> <ul style="list-style-type: none"> <li>Open terrace</li> <li>Landscaped</li> <li>Private garden</li> <li>Communal Garden</li> </ul>	<b>EXTRA</b> <ul style="list-style-type: none"> <li>Built in wardrobes</li> <li>Reinforced door</li> <li>Double glazed windows</li> </ul>	<b>ENERGETIC CERTIFIED</b>  <p>The image shows a vertical energy efficiency scale with seven horizontal bars labeled A through G. The bars are colored in a gradient from green at the top to red at the bottom. A vertical green bar on the right side of the scale is labeled 'IN PROGRESS'.</p>	

**"OUR EXPERIENCE IS YOUR GUARANTEE"**