



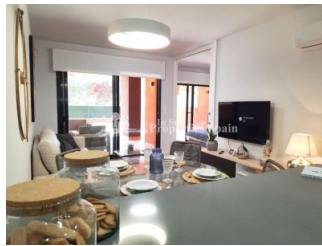
REF: # 6773

ORIHUELA COSTA (VILLAMARTIN GOLF)



INFO

PRICE:	213.500 €
PROPERTY TYPE:	Apartment
CITY:	Orihuela Costa (Villamartin Golf)
BEDROOMS:	2
Bathrooms:	2
Build (m2):	85
Plot (m2):	79
Terrace (m2):	79
Year:	
Floor:	-
Old price	-



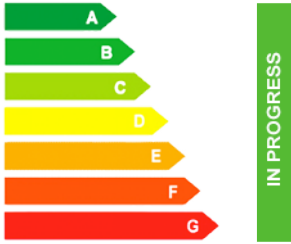
DESCRIPTION

This is a stunning new build development in the area of VILLAMARTIN GOLF " 5 minutes walk from Villamartin Plaza". The project consists of 2 bedroom, 2 bathroom APARTMENTS in a lovely Mediterranean style design all surrounding a fabulous community pool and gardens. Build size from 85m2 and all remaining apartments are ground floor properties with private gardens of 51m2 + . Qualities include.. Indoor flooring in porcelain stoneware imitating wood. Vertical walls in bathrooms and kitchens tiled with porcelain stoneware. Suspended plaster ceiling in kitchen and bathrooms. Indoor doors in white lacquered. Built-in Cupboards with folding and/or sliding doors to match with the door of passage and interior lining. Security entrance door in access to housing, white lacquered. Motorized shutters. Underfloor heating in bathrooms. Dark grey painted concrete Pergolas. Pre-installation of Air conditioning and heating. Common areas with automatic irrigation and signposting

and ambient lighting in garden and common areas. Pool. Fully enclosed enclosure with automated door for vehicle access. 5 minutes walk from Villamartin Plaza and Villamartin Golf and only 5 minutes drive from Zenia Boulevard and 10 minutes drive to La Zenia Beach. There is a bus service connecting the area of Orihuela Costa and Torrevieja with a bus stop just 200m from the development. Villamartin offers a wide range of services. For over 40 years it has been a golf tourist attraction and as it is expected from a residential complex of this standard all services are fully developed. The area is also known to have one of the healthiest climates in the world. Villamartin is also very close to renowned high standard international school El Limonar and La Zenia Boulevard - the newest shopping centre in our area and also the largest one in the Alicante region. At over 160,000m² It offers more than 150 shops and services including a huge supermarket Alcampo, Leroy Merlin, Primark, Swarovski, Decathlon, Massimo Dutti, Zara, Stradivarius and much more. There are many commercial centers including the well know Villamartin Plaza and La Fuente Centre along with many restaurants, fashion shops, supermarkets, banks, pharmacies etc. Villamartin was built round one of the most prestigious golf courses on the Costa Blanca- Villamartin Golf Club- it is home to a Cosmopolitan and International community. Just a short distance away you can find 3 other golf courses such as Las Ramblas, Campoamor and La Finca. However, it is not only a golfers paradise, you can also find a large range of activities and entertainment for all the family; water parks in Torrevieja and Ciudad Quesada, 3km from some of the best beaches in the region, open weekly markets, cinemas etc. Villamartin is approximately 50 minutes from Alicante International and Murcia Corvera airport. By train there are connections Madrid-Alicante (2:30 h) AVE Madrid-Murcia & Barcelona-Alicante (4.5 h).

ENERGETIC CERTIFIED



STYLE	VIEWS	DISTANCE TO :	ORIENTATION
<ul style="list-style-type: none"> Modern Mediterranean 	<ul style="list-style-type: none"> Panoramic views 	Beach : 3 Km Airport: 50 Km Town center : 500 m	South East West
FURNITURE	PARKING	FLOORING	KITCHEN
<ul style="list-style-type: none"> Not furnished 	Parking no Cars: 1	<ul style="list-style-type: none"> Tile floors Stone floors 	<ul style="list-style-type: none"> Open kitchen Equipped kitchen
GARDEN AND TERRACES	EXTRA	ENERGETIC CERTIFIED	
<ul style="list-style-type: none"> Covered terrace Open terrace Landscaped Stone walls Private garden Communal Garden 	<ul style="list-style-type: none"> Built in wardrobes Reinforced door Double glazed windows Lift 	 <p>The image shows a vertical energy efficiency scale with seven levels, A through G, represented by horizontal bars of increasing length and changing colors from green at the top to red at the bottom. Level A is the highest (shortest bar), and level G is the lowest (longest bar). To the right of this scale is a vertical green bar with the text 'IN PROGRESS' written vertically, indicating the current status of the property's energy certification.</p>	

"OUR EXPERIENCE IS YOUR GUARANTEE"