



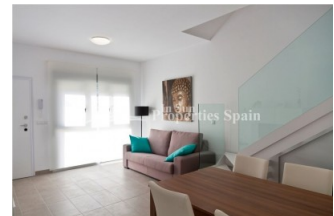
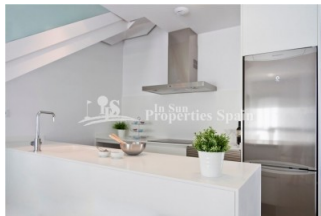
REF: # 6377

ORIHUELA COSTA (TORRE DE LA HORADADA)



INFO

PRICE:	230.000 €
PROPERTY TYPE:	Townhouse
CITY:	Orihuela Costa (Torre de la Horadada)
BEDROOMS:	3
Bathrooms:	2
Build (m2):	90
Plot (m2):	-
Terrace (m2):	71
Year:	2020
Floor:	-
Old price	-

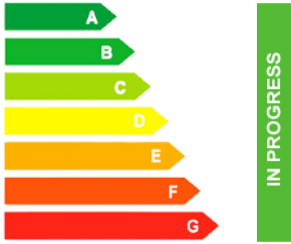


DESCRIPTION

Just 500m from the beach promenade of TORRE DE LA HORADADA you will find these fantastic new Townhouses. The 90m2 properties offer 33m2 of terrace/garden and a generous 38m2 roof solarium. Underground parking place is included in the price and there is access to the communal swimming pool. The accommodation distributes over 2 floor and offers an open plan living area with modern equipped kitchen, bathroom and bedroom to the ground floor to the first floor there are two further bedrooms and a bathroom. There is access to the roof solarium. Situated in a privileged location just 5 minutes from all the amenities including the beach promenade, town square and the marina. 10 minutes drive to the prestigious golf courses of Campoamor, Villamartín, Las Ramblas & La Manga Golf Club. 15 minutes drive to Murcia airport, 30 minutes drive to the main cities of Murcia and Alicante.

ENERGETIC CERTIFIED



STYLE	VIEWS	DISTANCE TO :	ORIENTATION
<ul style="list-style-type: none"> Modern Contemporary 	<ul style="list-style-type: none"> Panoramic views 	Beach : 500 m Airport: 30 Km Town center : 500 m	South East West
FURNITURE	PARKING	FLOORING	KITCHEN
<ul style="list-style-type: none"> Not furnished 	Parking no Cars: 1	<ul style="list-style-type: none"> Tile floors Stone floors 	<ul style="list-style-type: none"> Open kitchen Equipped kitchen
GARDEN AND TERRACES	EXTRA	ENERGETIC CERTIFIED	
<ul style="list-style-type: none"> Covered terrace Open terrace Private garden Communal Garden 	<ul style="list-style-type: none"> Built in wardrobes Reinforced door Double glazed windows 	 <p>The image shows a vertical energy efficiency scale with seven horizontal bars labeled A through G. The bars are colored in a gradient from green at the top to red at the bottom. A vertical green bar on the right side of the scale is labeled 'IN PROGRESS'.</p>	

"OUR EXPERIENCE IS YOUR GUARANTEE"