



REF: # 6139

BENITACHELL



INFO

PRICE: 152.461 €

PROPERTY TYPE: Apartment

CITY: Benitachell

BEDROOMS: 2

Bathrooms: 1

Build (m2): 92

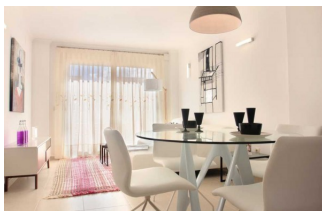
Plot (m2): -

Terrace (m2): -

Year: -

Floor: -

Old price -



DESCRIPTION

Apartments with 2 beds, 1 bath or 2 beds 2 baths in Cumbre del Sol, with complete communal areas for families to enjoy throughout the year. This development has several pools with spacious terraces for sunbathing, social club, children's play area, gardens, parking areas for guests, with access to a hiking trail to the Cala Moraig beach. With all the services that Cumbre del Sol enjoys: shopping centre, supermarket, hairdresser, chemist, bars and restaurants, tennis and paddle tennis courts, hiking trails, international school Lady Elizabeth Junior School, equestrian centre, beach and coves with beach bars ...

ENERGETIC CERTIFIED



VIEWS

- Panoramic views

ENERGETIC CERTIFIED



"OUR EXPERIENCE IS YOUR GUARANTEE"