



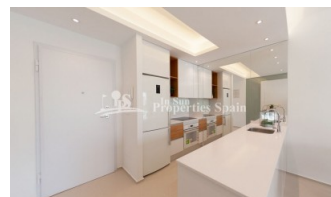
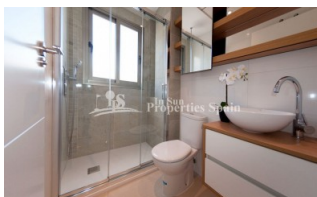
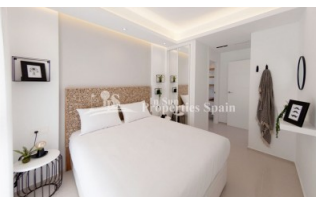
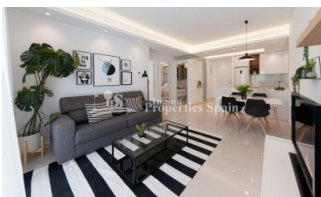
REF: # 5925

QUESADA-ROJALES (DONA PEPA)



INFO

PRICE:	222.000 €
PROPERTY TYPE:	Apartment
CITY:	Quesada-Rojales (Dona Pepa)
BEDROOMS:	3
Bathrooms:	2
Build (m2):	96
Plot (m2):	-
Terrace (m2):	129
Year:	2019
Floor:	-
Old price	-

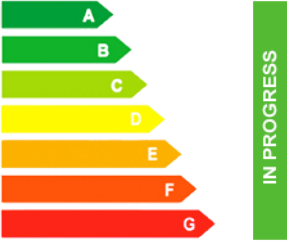


DESCRIPTION

Delivery September 2019. A STUNNING new development in DONA PEPA of 2 and 3 bedroom, 2 bathroom Ground and Top Floor Apartments. Ground floor of minimum 96m2 come with private 129m2 garden, from €222,000 and First Floor of minimum 96m2 come with private 75m2 roof solarium, from €248,000. These Apartments are from a well renowned builder with over 40 years experience, offering their same signature in terms of design, quality and finish. A home you will be proud to own! Doña Pepa is an elegant urbanization with wide avenues, wonderful views to the Natural Park and the salt lakes with a wide range of leisure activities and all the necessary amenities without having to take a car. It is only 30 minutes away from international airports, 35 minutes

from Alicante and 5 minutes from the most beautiful beaches of the Costa Blanca.It is an area with good annual temperatures and a great atmosphere. The area of Doña Pepa has a widely varied infrastructure offering a multitude of shops, supermarkets, restaurants, cafes, medical centers, pharmacies, golf courses, banks, a 4* Hotel with a Spa, a church, a social center, a cultural center, sports areas, an aquapark, a school, two natural parks, a religious center and high quality shopping complexes.



STYLE <ul style="list-style-type: none"> Modern Contemporary 	VIEWS <ul style="list-style-type: none"> Panoramic views 	AIRCONDITIONING <ul style="list-style-type: none"> Central airconditioning 	DISTANCE TO : <div>Beach : +10 Km</div> <div>Airport: 30 Km</div> <div>Town center : 1 Km</div>
ORIENTATION <div>South East West</div>	PARKING <div>Parking no Cars: 1</div>	MAIN LIVING AREA <ul style="list-style-type: none"> Bathroom en-suite 	FLOORING <ul style="list-style-type: none"> Tile floors Stone floors
KITCHEN <ul style="list-style-type: none"> Open kitchen Equipped kitchen Granite countertop 	GARDEN AND TERRACES <ul style="list-style-type: none"> Covered terrace Open terrace Landscaped Private garden Communal Garden 	EXTRA <ul style="list-style-type: none"> Built in wardrobes Reinforced door Double glazed windows 	ENERGETIC CERTIFIED <div>  </div>

"OUR EXPERIENCE IS YOUR GUARANTEE"