



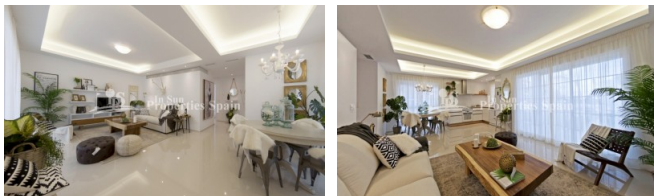
REF: # 5774

QUESADA-ROJALES (DONA PEPA)



INFO

PRICE:	197.000 €
PROPERTY TYPE:	Apartment (Penthouse)
CITY:	Quesada-Rojales (Dona Pepa)
BEDROOMS:	2
Bathrooms:	2
Build (m2):	82
Plot (m2):	-
Terrace (m2):	73
Year:	-
Floor:	-
Old price	-

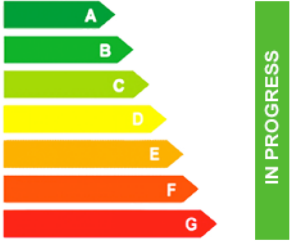


DESCRIPTION

Allegra is a lovely complex in DONA PEPA, QUESADA where you can find different model of properties: apartments and townhouses. It's a gated residential, with beautiful green areas, communal swimming pools and parking, designed in Mediterranean style. All of the apartments are overlooking to the pool and the communal gardens. These apartments counts with 2 or 3 bedrooms, 2 bathrooms, living room, kitchen, private garden or private solarium. This is a 2 bedroom, 2 bathroom 89m2 PENTHOUSE apartment with 7m2 covered terrace and 73m2 private roof solarium. The layout is modern, open plan with living/dining room and kitchen. The exterior is in the Mediterranean style, but benefiting from a contemporary style interior with superior quality finish. It's located only 30 minutes away from Alicante Airport and 5 minutes from the most beautiful beaches of the Costa Blanca. It's a perfect place for a short-term stay as well as to live all year long.

ENERGETIC CERTIFIED



STYLE <ul style="list-style-type: none"> • Modern • Contemporary 	VIEWS <ul style="list-style-type: none"> • Panoramic views 	DISTANCE TO : <div>Beach : 9 Km</div> <div>Airport: 30 Km</div> <div>Town center : 1 Km</div>	ORIENTATION <div>South East West</div>
PARKING <div>Parking no Cars: 1</div>	FLOORING <ul style="list-style-type: none"> • Tile floors • Stone floors 	KITCHEN <ul style="list-style-type: none"> • Open kitchen • Equipped kitchen • Granite countertop 	GARDEN AND TERRACES <ul style="list-style-type: none"> • Covered terrace • Open terrace • Landscaped • Private garden • Communal Garden
EXTRA <ul style="list-style-type: none"> • Built in wardrobes • Reinforced door • Double glazed windows 	ENERGETIC CERTIFIED <div>  </div>		

"OUR EXPERIENCE IS YOUR GUARANTEE"