



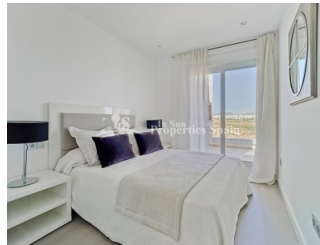
REF: # 4492

ORIHUELA COSTA (LOS ALCAZARES)



INFO

PRICE:	82.900 €
PROPERTY TYPE:	Apartment
CITY:	Orihuela Costa (Los Alcazares)
BEDROOMS:	2
Bathrooms:	1
Build (m2):	68
Plot (m2):	-
Terrace (m2):	19
Year:	2018
Floor:	2
Old price	-




DESCRIPTION

Last 2 KEY READY Frontline Golf Apartments with 2 bedrooms, 1 bathroom located at TERRAZAS DE LA TORRE GOLF RESORT, MURCIA. Set on a fantastic 18-hole golf course designed by Jack Nicklaus and only 15 minutes the beaches of the Mar Menor these remaining second floor 67'70m2 Apartments are KEY READY and boast open plan living space with dining/office area and modern fitted kitchen. There are 2 bedrooms with fitted wardrobes and a main bathroom suite (fully equipped). Complete with household appliances and AC. In addition to the private 18'50m2 terrace, the development offers a Communal Pool and lovely communal gardens. Las Terrazas de la Torre, also known as "Saurines de la Torre", was opened late 2010, built by Polaris World with the superb golf course which is now fully open and functional, offering not only a challenge for golfers but also beautiful

views for spectators. The resort has supermarket, bars, restaurants, private security 24 hours a day, etc. The undulating fairways and greens make for a striking contrast with the flat dry countryside outside the resort, an oasis in a desert dotted with other similar projects, including the elder sister of this one, La Torre Golf Resort, just a couple of miles away, a fully completed resort with a raft of facilities.



STYLE	VIEWS	DISTANCE TO :	ORIENTATION
<ul style="list-style-type: none"> Modern Contemporary 	<ul style="list-style-type: none"> Panoramic views Mountain views 	Beach : +10 Km Airport: 20 Km Town center : 3 Km	South west
FURNITURE	TAX	FLOORING	KITCHEN
<ul style="list-style-type: none"> Not furnished 	Community : 1.320 € I.B.I : 400 €	<ul style="list-style-type: none"> Tile floors Stone floors 	<ul style="list-style-type: none"> Open kitchen Equipped kitchen Granite countertop
GARDEN AND TERRACES	EXTRA	ENERGETIC CERTIFIED	
<ul style="list-style-type: none"> Open terrace Landscaped Private garden Communal Garden 	<ul style="list-style-type: none"> Built in wardrobes Reinforced door Double glazed windows 	 <p>The image shows a vertical energy efficiency scale with seven levels, A through G, represented by horizontal bars of increasing length and changing colors from green at the top to red at the bottom. Level A is dark green, B is medium green, C is light green, D is yellow, E is orange-yellow, F is orange, and G is red. To the right of this scale is a vertical green bar with the text 'IN PROGRESS' written vertically inside it, positioned between the D and E levels.</p>	

"OUR EXPERIENCE IS YOUR GUARANTEE"