



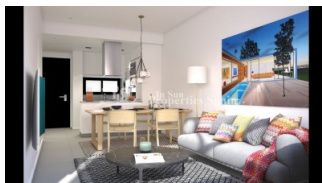
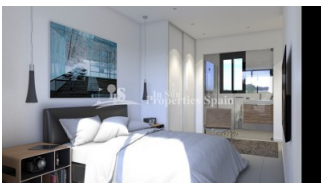
REF: # 4448

ORIHUELA COSTA (VILLAMARTIN GOLF )



#### INFO

PRICE:	177.000 €
PROPERTY TYPE:	Apartment
CITY:	Orihuela Costa (Villamartin Golf )
BEDROOMS:	2
Bathrooms:	2
Build ( m2 ):	55
Plot ( m2 ):	-
Terrace ( m2 ):	11
Year:	
Floor:	-
Old price	-




#### DESCRIPTION

VALENTINO GOLF III in VILLAMARTIN - NEW modern apartments 2 bedrooms, 2 bathrooms with POOL VIEW, comfortable APARTMENTS with a spacious terrace to enjoy the 300 days of sunshine a year and the Mediterranean climate. Prices from 177,000 to 226,000 Euros. Penthouse with 55 m2 roof terrace. Handover march 2023. Underground parking included in the price! Located in a secure, gated complex with communal swimming pools, communal gardens, just a 5 minute walk to the famous VILLAMARTIN PLAZA and golf course with clubhouse, just 5 minutes by car to the ZENIA BOULEVARD shopping center and the white sandy beaches of Orihuela Costa. Villamartin Plaza offers year-round services such as bars, restaurants, banks and a selection of shops and medical center and school, making it an ideal place to own a

vacation rental or permanent residence in Spain. Airports: Alicante and Murcia Airport 45 minutes away.



STYLE	VIEWS	DISTANCE TO :	ORIENTATION
<ul style="list-style-type: none"> <li>Modern</li> <li>Contemporary</li> </ul>	<ul style="list-style-type: none"> <li>Panoramic views</li> </ul>	Beach : 3 Km Airport: 50 Km Town center : 500 m	South
FURNITURE	PARKING	FLOORING	KITCHEN
<ul style="list-style-type: none"> <li>Not furnished</li> </ul>	Parking no Cars: 1	<ul style="list-style-type: none"> <li>Tile floors</li> <li>Stone floors</li> </ul>	<ul style="list-style-type: none"> <li>Open kitchen</li> <li>Equipped kitchen</li> <li>Granite countertop</li> </ul>
GARDEN AND TERRACES	EXTRA	ENERGETIC CERTIFIED	
<ul style="list-style-type: none"> <li>Open terrace</li> <li>Palm trees</li> <li>Landscaped</li> <li>Fenced</li> <li>Stone walls</li> <li>Padle tennis</li> <li>Communal Garden</li> </ul>	<ul style="list-style-type: none"> <li>Reinforced door</li> <li>Double glazed windows</li> <li>Lift</li> </ul>	 <p>The image shows a vertical energy efficiency scale with seven levels, A through G, represented by horizontal bars of increasing length and changing colors from green at the top to red at the bottom. Level A is the highest (shortest bar), and level G is the lowest (longest bar). To the right of this scale is a vertical green bar with the text 'IN PROGRESS' written vertically, indicating the current status of the property's energy certification.</p>	

**"OUR EXPERIENCE IS YOUR GUARANTEE"**