



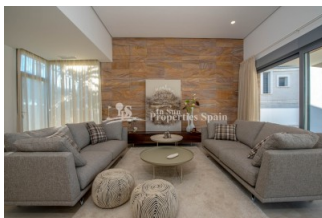
REF: # 4442

ORIHUELA COSTA (CAMPOAMOR BEACH)



#### INFO

PRICE:	960.000 €
PROPERTY TYPE:	Villa
CITY:	Orihuela Costa (Campoamor Beach)
BEDROOMS:	4
Bathrooms:	4
Build ( m2 ):	380
Plot ( m2 ):	700
Terrace ( m2 ):	-
Year:	-
Floor:	-
Old price	-




#### DESCRIPTION

Occupying a FABULOUS 700m2 plot, this brand NEW 380m2 exquisite SOUTH facing VILLA is located just 500m from the BEACHES AND HARBOUR at CAMPOAMOR. Boasting 4 generous bedrooms, 4 bathrooms, private solarium and private swimming pool. Elegance, privacy and sophistication combine to create a truly magnificent home enveloped in light and comfort. The extensive use of glass creates a calming vista out to the pool. Air-conditioning by aerotermia, pre-installation of heating floor and White-goods included. Furniture package (optional +25.000€) Well positioned retaining the value of peaceful living whilst being conveniently close to all amenities and Championship Golf. Campoamor is a popular SEASIDE RESORT on the border of the Costa Blanca and Costa Calida. Blessed with over 320 days of sunshine per year and breathtaking blue flag beaches with a good range of facilities, just 15 minutes from Murcia Airport and 35 minutes from Alicante Airport,

this VILLA and location create the ultimate retreat.



STYLE	VIEWS	DISTANCE TO :	ORIENTATION
<ul style="list-style-type: none"> <li>Modern</li> <li>Contemporary</li> </ul>	<ul style="list-style-type: none"> <li>Panoramic views</li> <li>Sea views</li> </ul>	Beach : 200 m Airport: 30 Km Town center : 500 m	South
PARKING	MAIN LIVING AREA	FLOORING	KITCHEN
Parking no Cars: 2	<ul style="list-style-type: none"> <li>Storage</li> </ul>	<ul style="list-style-type: none"> <li>Tile floors</li> <li>Stone floors</li> </ul>	<ul style="list-style-type: none"> <li>Open kitchen</li> <li>Equipped kitchen</li> <li>Granite countertop</li> </ul>
GARDEN AND TERRACES	EXTRA	ENERGETIC CERTIFIED	
<ul style="list-style-type: none"> <li>Covered terrace</li> <li>Open terrace</li> <li>Landscaped</li> <li>Stone walls</li> <li>Private garden</li> </ul>	<ul style="list-style-type: none"> <li>Built in wardrobes</li> <li>Reinforced door</li> <li>Double glazed windows</li> </ul>	 <p>The image shows a vertical energy efficiency scale with seven levels, A through G, represented by horizontal bars of decreasing length and increasing color intensity from green at the top to red at the bottom. A green vertical bar on the right side of the scale is labeled 'IN PROGRESS' and extends to the level of 'A'.</p>	

**"OUR EXPERIENCE IS YOUR GUARANTEE"**