



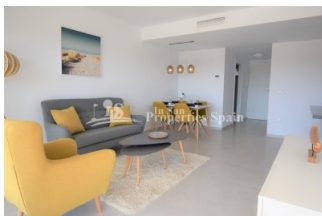
REF: # 4360

ORIHUELA COSTA (VILLAMARTIN AREA)



INFO

| | |
|-----------------|-----------------------------------|
| PRICE: | 195.000 € |
| PROPERTY TYPE: | Apartment |
| CITY: | Orihuela Costa (Villamartin Area) |
| BEDROOMS: | 2 |
| Bathrooms: | 2 |
| Build (m2): | 92 |
| Plot (m2): | - |
| Terrace (m2): | 21 |
| Year: | |
| Floor: | - |
| Old price | - |

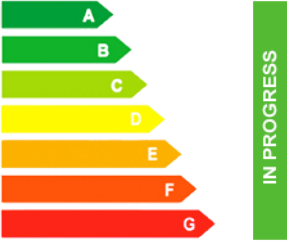


DESCRIPTION

Superb new development of lift assisted Apartments with 2 and 3 bedrooms, 2 bathrooms located in VILLAMARTIN. For a LIMITED TIME only we offer furniture vouchers of 3.000€ on many apartments along with Promotional prices on 3 bed ground and top floor apartments, Special Fully furnished and equipped options and a Refundable reservation deposit of only 3.000€. Key features of this project; Some Key-ready apartments, ALL apartments have a large South facing terrace, Spacious apartments (smallest is 71 m² with 21 m² terrace) , Large central garden with natural grass, plants, trees and 3 swimming pools (of which 1 heated), outdoor gym equipment and play area, Nice open views, many apartments with lateral sea views (La Zenia), All have private parking space and storage room in the basement included in the price , Full equipment of the apartment (without furniture) to include; kitchen appliances, bathrooms with vanity unit/shower screen/spotlights, FULL installation of ducted air conditioning...and much more. The

projects are within walking distance to the popular Villamartin Plaza & Golf course and only a few minutes' drive from the NEW Shopping center Zenia Boulevard. There are 4 championship golf courses (Villamartin, Las Ramblas, Las Colinas & Campoamor) and the sandy beaches of Orihuela Costa, all close by. Airports: Alicante - Approx 50 mins drive



| STYLE | VIEWS | DISTANCE TO : | ORIENTATION |
|--|---|---|--|
| <ul style="list-style-type: none"> Modern | <ul style="list-style-type: none"> Panoramic views Sea views | Beach : 3 Km Airport: 50 Km Town center : 1 Km | South west |
| FURNITURE | PARKING | MAIN LIVING AREA | FLOORING |
| <ul style="list-style-type: none"> Not furnished | Garage no Cars : 1 | <ul style="list-style-type: none"> Storage Bathroom en-suite | <ul style="list-style-type: none"> Tile floors Stone floors |
| KITCHEN | GARDEN AND TERRACES | EXTRA | ENERGETIC CERTIFIED |
| <ul style="list-style-type: none"> Open kitchen Equipped kitchen Granite countertop | <ul style="list-style-type: none"> Open terrace Exterior lights Palm trees Play Ground Landscaped Communal Garden | <ul style="list-style-type: none"> Built in wardrobes Double glazed windows Storage room |  <p>The image shows a vertical energy efficiency scale with seven horizontal bars labeled A through G. Bar A is dark green, B is green, C is light green, D is yellow, E is orange, F is red-orange, and G is red. To the right of these bars is a vertical green bar with the text 'IN PROGRESS' written vertically inside it.</p> |

"OUR EXPERIENCE IS YOUR GUARANTEE"