



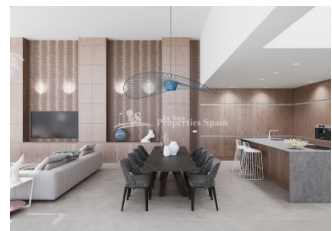
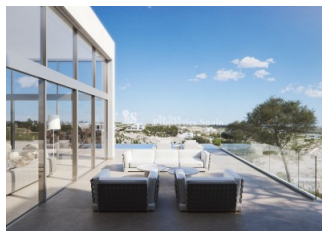
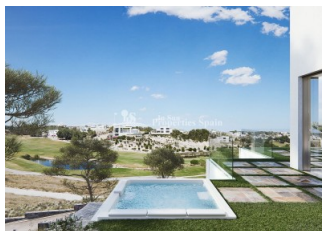
REF: # 4279

ORIHUELA COSTA (LAS COLINAS GOLF CLUB)



INFO

PRICE:	2.075.000 €
PROPERTY TYPE:	Villa
CITY:	Orihuela Costa (Las Colinas Golf Club)
BEDROOMS:	4
Bathrooms:	4
Build (m2):	400
Plot (m2):	-
Terrace (m2):	180
Year:	2019
Floor:	-
Old price	-




DESCRIPTION

This Signature Key Ready 400m2 villa at LAS COLINAS GOLF & COUNTRY CLUB offers an outstanding unique design in the Madroño Community. On a downhill slope, this luxury villa steps with the land, allowing the creation of different levels and fitting the house into its natural setting. This elegant four-story villa features an open-plan kitchen, dining and living area, a utility room a guest toilet and a suite with its own bathroom on the main floor. A large spacious terrace surrounding the villa and an infinity pool are located on this floor as well, to enjoy life outdoors. One suite with its own private bathroom, two bedrooms, one bathroom and a beautiful terrace can be found on the first floor. At the access level, a large solarium showcases panoramic views of the championship golf course. The garage and a storeroom are located in the basement. Complete with Underfloor heating, Air conditioning, Home Automation system, Motorized interior shades, Schüco doors systems, Motorized Venetian blinds, Fully furnished, Home

appliances, Water softening system and Outdoor whirlpool. Choose your villa plot and villa design and then the complete villa build project will be fully managed on your behalf, from start to finish. All the Las Colinas Properties are all situated within a safe, secure gated natural woodland environment and just a short drive from the Mediterranean sea. Certified by 40 years of experience! Quality is one of this developer’s core values. All aspects of the construction quality standards are above-average: extra-high ceilings, uncluttered bathrooms with floor-level showers, special sound and floor insulation, dual-flow ventilation systems, panoramic windows and top-of-the-range aluminum joinery, to mention but a few. Their experienced team of architects and engineers are highly experienced in the luxury end of the market, taking care of every detail, right from the initial blueprint. Landscape architects design the exterior during the initial phases of the project, to ensure seamless integration of buildings and their environment. The interiors are both functional and elegant, just like the exterior of the houses. Built-in furniture, kitchens, bathrooms and custom staircases are designed to reflect the essence of our projects. Signature properties are conveniently located on exclusive golf resorts and private residential complexes. They are in the most perfect locations with golf and sea views, privacy and proximity to services and amenities. Premium properties in premium locations!



STYLE <ul style="list-style-type: none"> Modern Contemporary 	VIEWS <ul style="list-style-type: none"> Panoramic views Mountain views 	AIRCONDITIONING <ul style="list-style-type: none"> Central airconditioning 	DISTANCE TO : <div>Beach : 6 Km</div> <div>Airport: 50 Km</div> <div>Town center : 3 Km</div>
ORIENTATION <div>South east</div>	FURNITURE <ul style="list-style-type: none"> Not furnished 	PARKING <div>Garage no Cars : 1</div> <div>Parking no Cars: 1</div>	MAIN LIVING AREA <ul style="list-style-type: none"> Storage Bathroom en-suite
FLOORING <ul style="list-style-type: none"> Tile floors Stone floors 	KITCHEN <ul style="list-style-type: none"> Open kitchen Equipped kitchen Granite countertop 	GARDEN AND TERRACES <ul style="list-style-type: none"> Open terrace Exterior lights Automatic watering system Palm trees Private garden 	HEATING <ul style="list-style-type: none"> Central electric heating
EXTRA <ul style="list-style-type: none"> Built in wardrobes Alarm Reinforced door Double glazed windows Video security Storage room Laundry room 	ENERGETIC CERTIFIED <div>  </div>		

"OUR EXPERIENCE IS YOUR GUARANTEE"